

THE
BOTANICAL EXCHANGE CLUB
AND SOCIETY OF THE BRITISH ISLES.

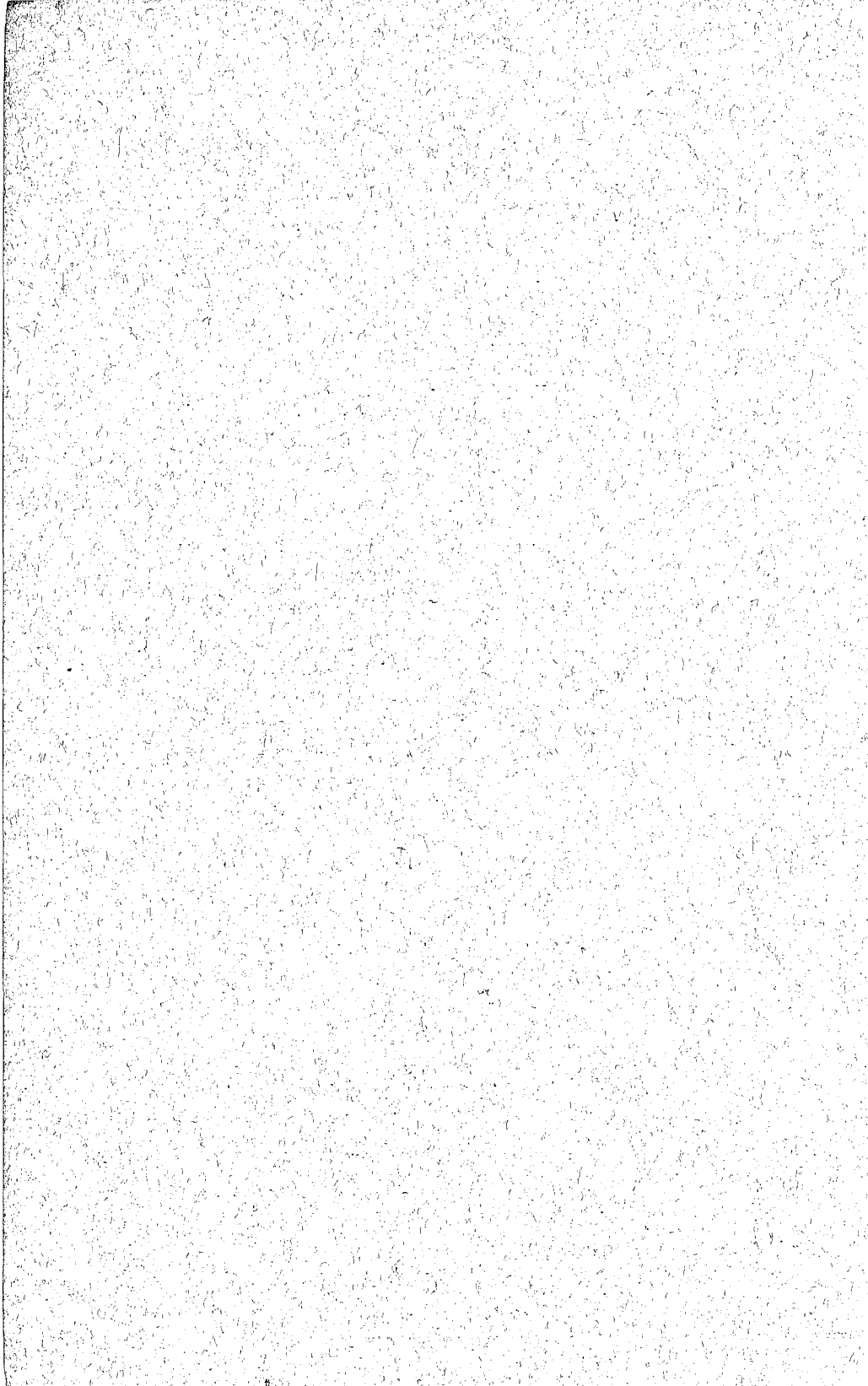
REPORT FOR 1913

BY THE
EDITOR AND DISTRIBUTOR,
A. BRUCE JACKSON.

VOL. III. PART VI.

PUBLISHED BY
T. BUNCLE & CO., MARKET PLACE, ARBROATH.
October 1914.

PRICE 3s 6d.



THE
BOTANICAL EXCHANGE CLUB
AND SOCIETY OF THE BRITISH ISLES

VOL. III. 1911-1913.

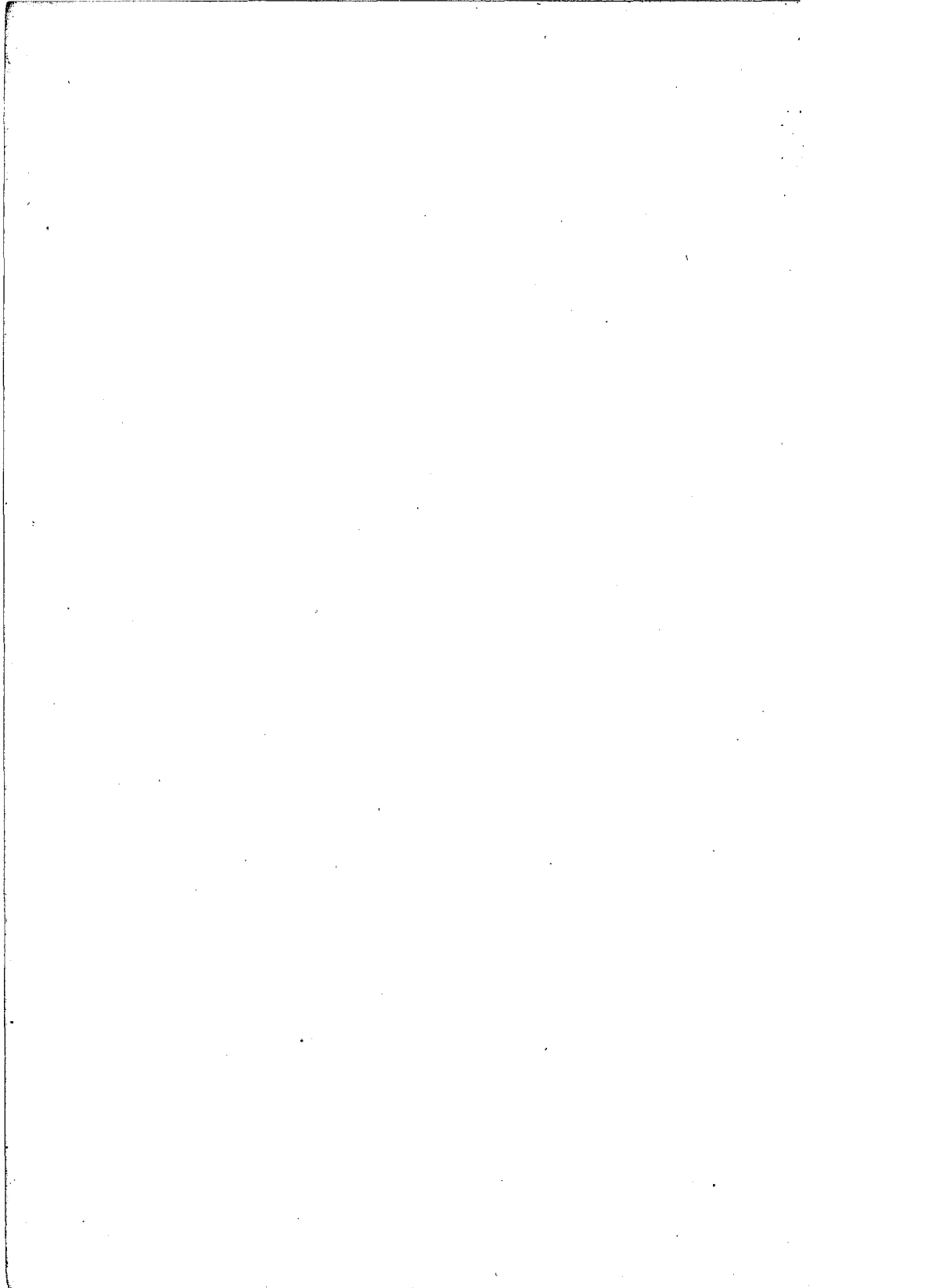
Secretary and Treasurer :

G. CLARIDGE DRUCE, M.A., J.P., F.L.S., Yardley Lodge, Oxford.

Distributors and Editors of Reports, as under :

Report.	Published.			
1911	1912, April.	...	SECRETARY.	Part i.
1911	1912, June.	...	J. A. WHELDON, F.L.S.	Part ii.
1912	1913, June.	...	SECRETARY.	Part iii.
1912	1913, August.	...	JOHN CRYER.	Part iv.
1913	1914, February.	...	SECRETARY.	Part v.
1913	1914, October.	...	A. BRUCE JACKSON.	Part vi.

Price of 6 Parts, 20s ; to Members, 15s.

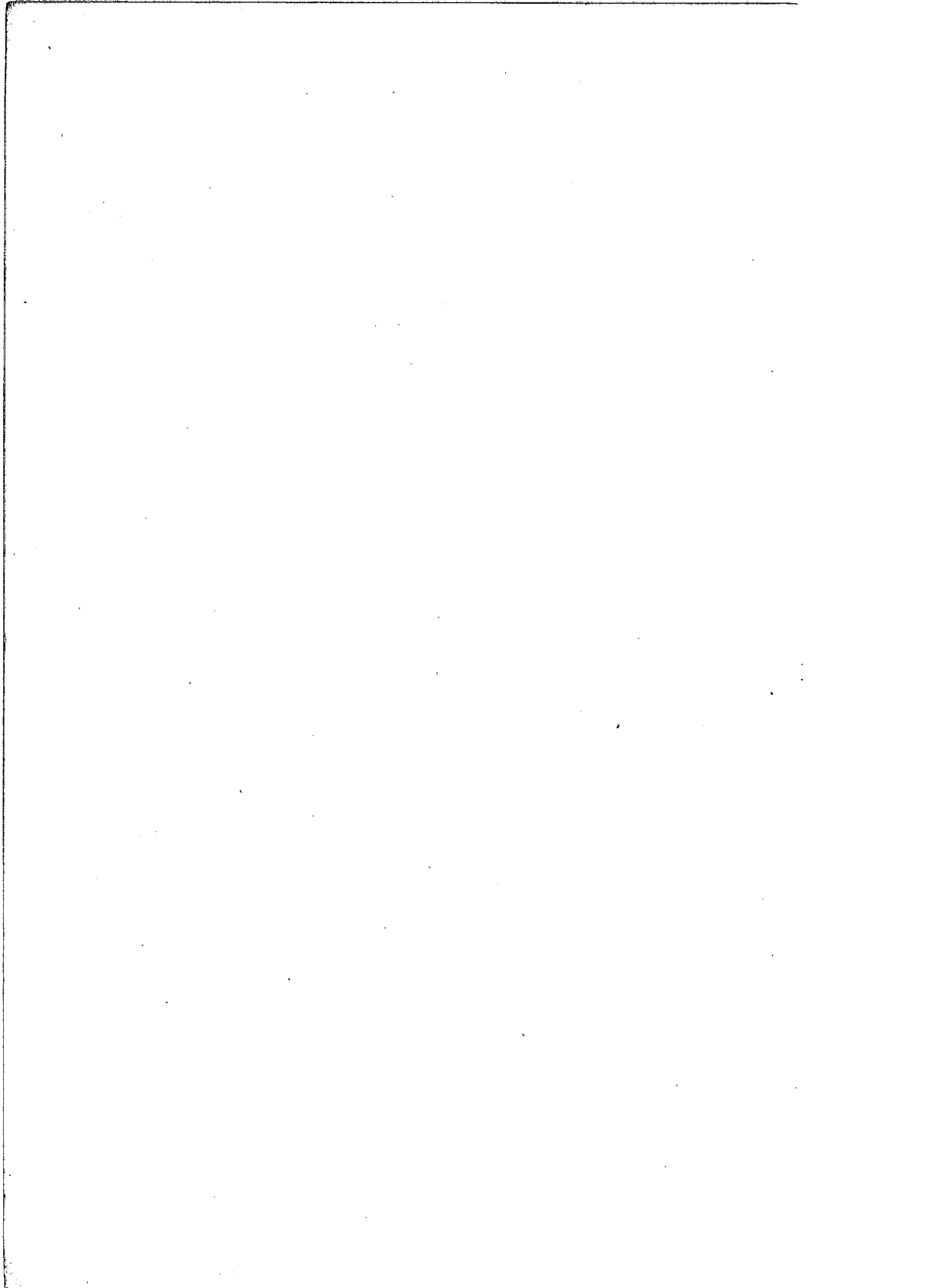


PREFACE TO VOLUME III.
OF THE
REPORTS OF THE BOTANICAL EXCHANGE CLUB
AND SOCIETY OF THE BRITISH ISLES.

The increase in the size of the Reports makes it desirable to close the Third Volume with the Distributor's Report for 1913. May I thank the members for their cordial support and ask them to assist in enlarging the membership roll, as by that and other means sufficient income may be assured to enable the accomplishment of producing a general Index to the three volumes, and also the reprinting of some of the earlier *Reports* which are now out of print, and at the same time to allow the publication of some illustrations of new British plants, and additional material respecting them.

G. CLARIDGE DRUCE.

YARDLEY LODGE,
OXFORD, 1914.



REPORT OF THE DISTRIBUTOR FOR 1913.

AN interesting series of plants was sent in for distribution. The number of specimens contributed was again very large, having only once been exceeded—in 1912—when Mr Cryer received 8656 sheets. Among critical genera Batrachian *Ranunculi*, *Viola*, and *Hieracia* were strongly represented, but there was a marked falling off in the number of roses, while brambles were entirely absent.

The material was, on the whole, well prepared. Mr Groves asks me to state that the Corstorphine specimens of water buttercups are among the best he has seen. A few members, however, still contribute specimens which are fit only to be burnt, and there is also a tendency on the part of one or two to sacrifice quality to quantity. 20 well-filled sheets of a plant are more acceptable than 35 consisting only of scraps. The distributor's labours would be considerably reduced if all members would take care that their sheets are of a uniform size, which should not exceed 17 inches by 11 inches. One member used sheets 20 inches by 13 inches which are most unwieldy, and had to be reduced at a considerable expenditure of time. Each set of plants should also be enclosed in a wrapper. The latter rule was entirely ignored by one large contributor.

We are indebted to Mrs Gregory, Miss Cardew, Prof. E. Hackel, Oberpfarrer Kükenthal, Drs Drabble and Thellung, Revs. E. F. Linton and E. S. Marshall, Major A. H. Wolley-Dod, and Messrs G. Baker, A. Bennett, C. E. Britton, C. Bucknall, S. F. Blake, J. Groves, H. W. Pugsley, C. E. Salmon, J. A. Wheldon, and A. J. Wilmott for critical notes.

Mr A. J. Wilmott rendered me valuable assistance during the distribution, and in revising the proof-sheets of the *Report*.

A. B. JACKSON,
Editor of Report and
Distributor for 1913.

3, THE AVENUE,
KEW GARDENS,
May 30, 1914.

LIST OF PARCELS RECEIVED.

	No. of Specimens.
Adamson, R. S., <i>B.A.</i>	143
Bailey, Charles, <i>M.Sc., F.L.S.</i>	96
Barton, W. C.,	229
Bickham, S. H., <i>F.L.S.</i>	248
Britton, C. E.,	184
Brown, G. C.,	465
Chester, G.,	70
Comber, John, <i>J.P.</i>	293
Compton, R. H., <i>M.A.</i>	23
Corstorphine, Mr and Mrs R. H.,	277
Cryer, John,	199
Druce, G. Claridge, <i>M.A., F.L.S., J.P.</i>	784
Foord-Kelcey, Mrs E. (deceased),	24
Hayward, Miss Ida, <i>F.L.S.</i>	97
Horwood, A. R.,	33
Jackson, A. Bruce,	36
Johnston, Henry Halcro, Col.	59
Little, J. E., <i>M.A.</i>	662
Lumb, D.,	1667
Marshall, Rev. E. S., <i>M.A., F.L.S.</i>	258
Melvill, J. Cosmo, <i>M.A., M.Sc., F.L.S.</i>	56
Pearsall, W. H.,	563
Robinson, F.,	11
Salmon, C. E., <i>F.L.S.</i>	40
Shoolbred, W. A., <i>M.R.C.S., F.L.S.</i>	362
Travis, W. G.,	134
Vigurs, C. C., <i>M.D.</i>	257
Waddell, Rev. C. H.,	29
Waterfall, Charles, <i>F.L.S.</i>	297
Webster, Alfred,	96
Wheldon, J. A., <i>F.L.S.</i>	578
White, J. W., <i>F.L.S.</i>	93
Wilson, A., <i>F.L.S., F.R.Met.S.</i>	187
Wolley-Dod, A. H., Major,	32
Total	<u>8582</u>

Thalictrum majus Crantz. [Ref. No. 3774.] Rocky, alder-shaded shore of Loch Tay, half-a-mile west of Fearnan Pier, v.-c. 88, Mid Perth, July 28, 1913. In flower, and very young fruit; a few more advanced fruits were collected on September 4. Three or four feet high; stems and petioles with some scattered hairs and glands; leaves large, vivid green above. Rev. E. F. Linton told me of this, which he and his brother had found there, about eighteen or twenty years ago; and Dr Moss, to whom I showed it, pronounced it to be "excellent *majus* (that is, of English authors)." I sent specimens from the same place, as well as from one or two stations on the River Lyon, both above and below Fortingal (where it is hardly so strong), to Mr Arthur Bennett, who agreed that they came under *T. majus*, but suggested that they were var. *capillare*, N. E. Brown, in *Engl. Bot. Supp.* p. 4 (1892) = *T. capillare* Reichb. Is this more than a shade-form? I believe the presence, or absence, of hairs and glands to be of small importance, having found so much variation in individuals, otherwise practically identical. An unusually hairy and glandular plant grows close to Fearnan Pier, in full exposure, and much dwarfed, but it has similar (though smaller) leaves to the present gathering, with the same fruit and long peduncles. Whether our *T. majus* is the true plant of Crantz, I cannot say, but it seems distinct from our other species.—E. S. MARSHALL. "Syme has said that in *T. majus* Jacq. the lateral branches of the petiole leave the main branch at right angles, and that he has seen true *majus* on the banks of Loch Tay. Mr Marshall's plant looks rightly named."—C. E. SALMON. Also from river shingle, Glen Lyon, near Fortingal, Mid Perth. [Ref. No. 842.] July 11, 1913.—W. A. SHOOLBRED.

Thalictrum——? River bank shingle, by the Lyon, near Fortingal, Mid Perth. [Ref. No. 845.] July 8, 1913.—W. A. SHOOLBRED.

Thalictrum Kochii Fr. [Ref. No. 3767.] Stony banks of the River Lyon, half-a-mile above Bridge of Lyon, near Fortingal, v.-c. 88, Mid Perth; flowering, July 11; fruiting, Sep. 5, 1913. These specimens are from the station discovered many years ago by Messrs Linton, where, as in several other places along this stream, it is associated with *T. majus*, but is usually the more abundant species. The leaves are more or less glaucous on the upper surface; it has the ovate fruit and hollow stem described by Fries in *Mantissa* III., p. 46. So far as I could ascertain, *T. minus* L. (*montanum* Wallr.) does not occur in the neighbourhood.—E. S. MARSHALL.

Ranunculus repens L., var. Origin, hill near Dalwhinnie, E. Inverness, July 1911. Hort. Chepstow, June 1913. In July 1911 the Rev. E. S. Marshall and I gathered a distinct looking form of *R. repens* on a hillside near Dalwhinnie in E. Inverness. It appeared

to agree well with the description in Rouy & Foucaud's *Flore de France* of *R. reptabundus* Jord. (pro specie) = *R. repens* = var. *subcaulis* Bréb. = var. *prostratus* Gaud. I sent a plant home to grow, but it did not flower until this year, though it has grown very freely, sending out long prostrate rooting runners in all directions. The few specimens sent were the only flowering ones of this year. In cultivation it retains its prostrate habit and the characteristic form of its leaves. The difference between it and a plant of the type, growing as a weed near it, was very striking.—W. A. SHOOLBRED. "I think this must come under var. *prostratus* Gaud. which I take as the type (*a*) in my *List*, although a somewhat less hairy and neater plant than our agrestal *repens*."—G. C. DRUCE. "The effect of cultivation is very marked when one compares these specimens with the original Dalwhinnie examples distributed in 1911 (see *Report* p. 66), but the leaves are still characteristic."—ED.

Ranunculus bulbosus L., forma. Sand dunes, Formby, South Lincs., v.-c. 59, May 1913. Smaller and hairier than our inland plant, but perhaps not separable as a dune form.—J. A. WHELDON. "This is evidently closely related to the plant from the dunes of St Ouen, Jersey, described by Mr G. Claridge Druce in *Bot. Exch. Club Report*, 1910, p. 495, as *R. bulbosus* L., var. *dunensis* Druce, and, like that, is, I think, to be regarded as a form of *R. valdepubens* Jord., from which it appears to be distinguished only by the globular and not depressed corm. Is the very abundant villosity of Mr Wheldon's plant a device adapted for the purpose of withstanding the desiccation of its habitat? A culture experiment would be useful. Jordan's *R. valdepubens*, it is interesting to recall, grew for years in his garden, where it reproduced itself without any change in its character."—C. E. BRITTON. "Not my *dunensis*, nor does it appear to come under any of the five forms given by Rouy and Foucaud."—G. C. DRUCE.

Ranunculus Flammula L., forma *tenuifolius* (Wallroth). [Ref. No. 10210.] On gravelly margin of pond, Savernake Forest, Wilts., Sept. 1913, coll. C. P. HURST. Dr Hugo Glück thinks it is only a form, not a true variety.—Comm., G. C. DRUCE.

Ranunculus Flammula L. Stony loch shore, 50 feet above sea level, Loch of Kirbistry Orphir, Mainland, Orkney, June 30th, 1913.—H. H. JOHNSTON. "I suppose under var. *tenuifolius* Wallr., as one of my specimens shows rootlets."—G. C. DRUCE. "This is the plant usually called var. *pseudo-reptans* Syme, of which it is the narrowest leaved form. Var. *tenuifolius* Wallr. is an earlier name. See *Report* 1910, p. 538."—ED. "I do not think my specimens come under the var. *pseudo-reptans* Syme, because nearly all of them have decumbent stems rooting at the base only, and in one or two specimens only did the stem root at one node only."—H. H. JOHNSTON, in *litt.*

Ranunculus reptans L. [Ref. No. 360.] Gravelly N. shore of Ullswater, Cumberland, Sept. 3, 1913.—S. H. BICKHAM. "Yes, true *reptans* with the slender arched internodes and hooked styles. Rouy and Foucaud (*Fl. Fr.*) class this as a mere variety of *Flammula* on a par with their other five 'leaf variation' forms. It deserves a better fate."—C. E. SALMON. "As Nyman does not include France for *R. reptans*, it may be that Rouy's plant is not identical with our northern plant which is at least sub-specifically distinct from *Flammula*."—G. C. DRUCE.

Ranunculus fluitans Lam. ? [Ref. No. 9677.] In the Cherwell, near Gosford Bridge, Oxford, 1913.—G. C. DRUCE. "Not *R. fluitans* I should say; the leaf-segments are too thin and too numerous; the stamens of *R. fluitans*, moreover, are usually, though not always, quite short. I think this must be a large state of the plant which Mr Hiern has referred to *R. sphaerospermus* Boiss. & Blanche, and which has characteristically large flowers, long peduncles, produces no floating leaves even in still water, and has the submersed leaves much divided, with the segments thin and short so as to form dense tufts."—J. GROVES.

Ranunculus trichophyllus Chaix, ? var. *fluitans* Gr. & Godr. Longlands, Dalton, v.-c. 69, May 30, 1913. This was a very pale-coloured plant when growing.—D. LUMB. "I should say *R. Drouetii*."—J. GROVES. "I think a weak form of the type."—G. C. DRUCE. "Why named var. *fluitans*; that is the ordinary form of the plant, being merely separated by Grenier and Godron to exclude the terrestrial form. More lax than usual *trichophyllus*."—A. BENNETT.

Ranunculus Drouetii F. Schultz. [Ref. No. 113.] Ditch, Rossie Moor, Forfar, v.-c. 90, Aug. 3, 1913.—R. and M. CORSTORPHINE. "Yes."—J. GROVES and G. C. DRUCE.

Ranunculus heterophyllus Weber, var. *triphyllus* Hiern. Abundant in several ponds near Dalton-in-Furness, May 24, 1913. Not previously recorded for 69 b.—W. H. PEARSALL. "Yes."—J. GROVES and A. BENNETT.

Ranunculus heterophyllus Weber. [Ref. No. 192.] Pond, Little Ley, N. Essex, v.-c. 19, May 7, 1912.—G. C. BROWN. "Yes, the form with glabrescent carpels and the floating leaves very deeply cut with wedge-shaped segments which I understand to come under f. 12, *triphyllus* Hiern."—J. GROVES.

Ranunculus heterophyllus Weber. [Ref. No. 110.] Quarry pool, Dubton, Auldbar, Forfar, Aug. 21, 1913.—R. and M. CORSTORPHINE. "Yes."—J. GROVES and G. C. DRUCE.

Ranunculus heterophyllus Weber. [Ref. No. 106.] Quarry pool, near Auldbar, Forfar, Aug. 1913. Floating leaves not typical, almost all tripartite.—R. and M. CORSTORPHINE. "Yes."—J. GROVES. "A curious plant which suggests *trichophyllus*. The flowers are small, can it be a form of *R. radians* Revel?"—G. C. DRUCE.

Ranunculus—? [Ref. No. 105.] Quarry pool, near Aberlemno, Forfar, Aug. 1913. In 1910 this buttercup was sent to Messrs Groves who said "The long tapering peduncles will not do for *R. heterophyllus*. We think it is a hybrid." There are no other buttercups near it. The plant is the same as when we last gathered it three years ago, except that the floating leaves are not so sharply or so deeply cut.—R. and M. CORSTORPHINE. "I think a form of *R. Baudotii*, from the size of the flowers, double curve of the peduncles and the practically glabrous carpels."—J. GROVES.

Ranunculus—? [Ref. No. 112.] Ditch near Guthrie, Forfar, Aug. 1913. The ditch was so dry that the submerged leaves were out of the water. The fruit was very scarce.—R. and M. CORSTORPHINE. "Was *trichophyllus* or typical *heterophyllus* in the same locality? It suggests the hybrid between these two."—G. C. DRUCE. "I think a hybrid with *R. heterophyllus* as one of the parents. There is no developed fruit. The curiously drawn-out appearance is probably due to growing under unusual conditions."—J. GROVES.

Ranunculus heterophyllus Weber? Biggar roadside, Walney I., v.-c. 69, May 22, 1913. Growing with *R. truncatus*, var. *peltatus*.—D. LUMB. "Apparently two plants here, the one having short peduncles and the fruit undeveloped, the other with long peduncles and glabrous carpels: the first would be *R. heterophyllus* or a hybrid, the second, I take it, the same as the following plant, from the same locality, sent as *R. peltatus*, var. *truncatus*?"—J. GROVES.

Ranunculus triphyllus Hiern. Mouzell, Dalton, v.-c. 69, May 28, 1913.—D. LUMB. "Should probably be referred to f. 12 *triphyllus* Hiern, although some of the carpels are quite bristly. Mr Hiern should not be cited as the authority for the specific name, as he named it as a form based on *R. triphyllus* Wallroth."—J. GROVES.

Ranunculus peltatus Schrank. Breast Mill Beck, Dalton, v.-c. 69, May 29, 1913.—D. LUMB. "Yes."—J. GROVES. "Yes, approaching *truncatus*."—G. C. DRUCE.

Ranunculus peltatus Schrank? Raikes Moor, Dalton, v.-c. 69. Floating leaves markedly less circular in outline than are those of the Breast Mill Beck plant.—D. LUMB. "Apparently two plants, the

smaller *R. heterophyllus*, the larger from the fat weak stem, and undeveloped carpels, probably a hybrid, *R. heterophyllus* × *peltatus*?—J. GROVES.

Ranunculus peltatus Schrank, var. *truncatus* × ? [Ref. No. 380.] Birkdault, Haverthwaite, N. Lancs., v.-c. 69 b, July 25, 1913. Habitat a few miles from the sea; not 20 feet above sea level, on the edge of Burn Barren Moss where peat bog meets upland of slate rocks. Growing in scarcely moving water a few inches deep, on peaty mud—a shallow drain connected by others with a tidal river in which *R. truncatus* is abundant. A few plants of this latter species were growing with the assumed hybrid. This fact, together with their further resemblance in many particulars, makes it possible that *truncatus* is one of the parents; but I am entirely at a loss to suggest the other. Quite different from anything previously described, so far as I can ascertain. It may be a new hybrid, but the remarkable uniformity in the shape of the floating leaves makes me hesitate to accept this view. Only two sheets out of twenty-four contain a floating leaf slightly differing in shape from the normal.—W. H. PEARSALL. “Near to *elongatus* W. P. Hiern.”—F. A. LEES and A. BENNETT. “Probably a hybrid with *R. peltatus* as one of the parents.”—J. GROVES and J. A. WHELDON. “Probably *R. peltatus*, var. *truncatus* × *Lenormandi*.”—E. S. MARSHALL.

Ranunculus peltatus Schrank, var. *penicillatus* (Hiern)? [Ref. No. 3909.] Pond below Cheddar Gorge, v.-c. 6, N. Somerset; in excellent flower and fruit. Petals large, often truncate at the apex. Carpels with long, spreading, mostly deciduous hairs. Leaves dark green, collapsing into a “pencil point”; no floating ones, however still the water may be. In the *Flora of Somerset* this (under the name of *R. pseudo-fluitans* Bab.) is referred to as having “rigid” segments to the leaves; but in no instance did I find this to be so. Probably it may vary, according to the season.—E. S. MARSHALL. “Not I think a form of *R. peltatus*. In 1891 my brother collected a *Batrachium* at Cheddar, which seemed best referred to Hiern’s form 32 *sphaerospermus*, and probably the present plant is an autumn state of this in which the leaves have somewhat lengthened out.”—J. GROVES. “This appears to be a robust form of the Oxon (4912) plant. The true *penicillatus* should have floating leaves.”—G. C. DRUCE.

Ranunculus peltatus Schrank, var. *truncatus* (Hiern). Biggar roadside, Walney I., v.-c. 69, May 22, 1913. Flowers with eleven, twelve, and thirteen petals were abundant.—D. LUMB. “Yes, towards var. *truncatus*. The carpels of this and of Mr Lumb’s plant from Breast Mill Beck are glabrous which is most unusual with *R. peltatus*.”—J. GROVES.

Ranunculus peltatus Schrank, b. *truncatus* (Hiern). [Ref. No. 114.] Ditch near Rescobie, Forfar, Aug. 1913.—R. and M. CORSTORPHINE. "Not *truncatus*, but referable to the type."—G. C. DRUCE. "*R. peltatus*, but no tendency towards var. *truncatus*."—J. GROVES.

Fumaria Borcei Jord., var. *britannica*. Askam, v.-c. 69, Aug. 22, 1913.—D. LUMB. "Yes."—H. W. PUGSLEY.

Fumaria Borcei Jord., var. *britannica* Pugsley, approaching sub-variety *longibracteata*. Sewage works, Bingley, v.-c. 64, Aug. 21, 1913. "Plant starved or shade grown with depauperate untypical flowers," teste H. W. Pugsley.—J. CRYER.

Fumaria Bastardi Bor. Crooklands, Dalton, Lancs., v.-c. 69, Aug. 21, 1913.—D. LUMB. "Yes."—H. W. PUGSLEY. Also *F. officinalis* L., from the same locality.

Fumaria Borcei Jord., var. From Badge Dingle, a fine defile in the Red Sandstone district a few miles N. of Bridgnorth. This plant seems different from the forms of *Borcei* obtaining in Shropshire; and I hardly think it the form *serotina*.—J. C. MELVILL. "A shade form of *F. officinalis*, possibly var. *elegans*, but more likely only type."—H. W. PUGSLEY.

Fumaria—? Shady ground, Meole Brace, Salop, July 1913.—J. C. MELVILL. "Shade grown *F. officinalis*."—H. W. PUGSLEY.

Fumaria officinalis L., var. *Wirtgeni* Hausskn. Beds of Botanical Gardens, Bradford, v.-c. 64, July 29, 1913. It has appeared here for many years in succession. Mr Pugsley writes:—"The fruit is rather broader than usual, but otherwise the plant is fairly characteristic."—J. CRYER.

Fumaria officinalis L., var. *Wirtgeni* Hausskn. Wroxeter, Salop, Aug. 1913.—J. C. MELVILL. "The sheet seen shows a very old and exhausted plant with unusually finely cut foliage. The small sepals and the fruits resemble those of var. *Wirtgeni*, but the racemes are more floriferous than one would expect, and I should like to see better material."—H. W. PUGSLEY.

Fumaria densiflora DC. Cultivated ground S. of "Foxholes," Hitchin, Herts., v.-c. 20, Oct. 12, 1913. Occurs occasionally in quantity amongst root-crops. Isolated plants also are sometimes found, but only on the chalk west of Hitchin.—J. E. LITTLE. "Yes, but this should be named *F. micrantha* Lag."—H. W. PUGSLEY.

Radicula Nasturtium-aquaticum R. and B., var. *siifolia* Druce. Ditch near Blackthorn, Oxon, and despite the dry weather of this summer maintaining its characters. In some examples the base of the stems was nearly one inch in diameter. The narrow upper leaflets distinguish it from a luxuriant form of the Water Cress, *i.e.* forma *latifolia* = var. *latifolia* (Bouvier).—G. C. DRUCE.

Cardamine pratensis L., flore pleno. Near Cartmel Fell Church, v.-c. 69 b, May 17, 1913. This double-flowered variety occurs plentifully in two damp meadows on Cartmel Fell, N. Lancs.—W. H. PEARSALL. "Yes, the 'flore pleno' form."—G. C. DRUCE

Cardamine bulbifera Cr. Harefield, Middlesex, May 4, 1913.—W. C. BARTON.

Erophila. [Ref. No. 61.] Between *E. verna* and *E. stenocarpa*. Stony loam, in corn, St Ippolyts, Herts, v.-c. 20, May 1913.—J. E. LITTLE.

Erophila. [Ref. No. 68.] Garden wall, Ickleford House, Hitchin, Herts (near Ref. Nos. 52 and 53?), April 28, 1913. Later flowering than *E. præcox* Des. on the same wall.—J. E. LITTLE. "I think this is *E. hirtella* Jord. With *Erophilae* it is essential to have well-pressed leaves. Perhaps another season Mr Little will kindly supply these."—C. E. SALMON.

Erophila. [Ref. No. 70.] Cultivated ground between Wilbury Hill and Ickleford, Herts, v.-c. 20, April 28, 1913. Between *E. verna* and *E. stenocarpa*?—J. E. LITTLE. "*E. stenocarpa*, I think."—C. E. SALMON. "A form of *E. majuscula* Jord., I think."—C. E. BRITTON.

Erophila. [Ref. No. 69.] Cadwell, Wilbury, Hitchin, Herts, v.-c. 20.—J. E. LITTLE. "This is a form of *Erophila majuscula* Jord., and appears to be *Draba majuscula* Rouy et Foucaud, var. *occidentalis* R. and F. = *E. occidentalis* Jord."—C. E. BRITTON.

Erophila. [Ref. No. 62.] Fell's Nurseries, Hitchin, Herts, v.-c. 20, April 1913. Mr J. A. Wheldon named this *E. occidentalis*. I hope the gathering is homogeneous. Rouy et Foucaud *Fl. de France* write thus:—*Draba majuscula* Rouy and Fouc. (β) *occidentalis* Nob. Feuilles d'un vert très clair sur le vif; pédicelles très allongées; silicules longues de 4.5—5 mm. larges de 2 mm.—J. E. LITTLE. "I think *E. stenocarpa* Jord., though there is *E. majuscula* Jord. with larger flowers and longer pods that comes very near it."—C. E. SALMON. "The fruit is too elongated for *E. occidentalis* Jord. It is *E. majuscula* Jord."—C. E. BRITTON.

Erophila. [Ref. No. 52.] Codicote, High Heath, Herts, April 13, 1912, May 1, 1913. Ant-hills and bare spots on dry, stony loam and gravel.—J. E. LITTLE. "Near *E. decipiens* Jord."—J. A. WHELDON. "I think that this is what I have referred to *E. virescens* Jord., but the material is not very good."—E. S. MARSHALL.

Erophila. [Ref. No. 53.] Mardley Heath, Herts, April 12, 1912. Dry sandy gravel on roadside, in grass on edge of ditch. Mr Wheldon considers it near *E. decipiens* Jord.—J. E. LITTLE. "Probably the same as No. 52, but only three poor specimens are on my sheet."—E. S. MARSHALL.

Erophila stenocarpa Jord. [Ref. No. 60.] Stony loam, in corn, St Ippolyts, Herts, v.-c. 20, May 1913. This plant seems to me to fulfil the requirements of *E. stenocarpa* more nearly than any I have as yet seen in a growing state. Mr J. A. Wheldon writes that much of what at first sight looks like *E. stenocarpa* is to him degenerate *E. majuscula*—plants on which he expressed this opinion are marked by great variation of the pods on the same plant.—J. E. LITTLE. "Yes, I think so."—C. E. SALMON. "Correct."—E. S. MARSHALL.

Erophila—? *præcox* DC. Wall tops, Abbey Road, Barrow-in-Furness, v.-c. 69, April 12, 1913.—D. LUMB. "I think the plant is *E. virescens* Jord., rather than *E. brachycarpa* Jord., but I should like to see further examples with better root-leaves."—C. E. SALMON. "Yes," *E. præcox* DC., I should say = *E. brachycarpa* Jord."—C. E. BRITTON and E. S. MARSHALL.

Erophila præcox DC. [Ref. No. 50.] Fell's Nurseries, Hitchin, Herts, April 12, 1913.—J. E. LITTLE.

Cochlearia micacea E. S. Marshall. [Ref. No. 3776.] Plentiful in wet places (more rarely on rather dry rocks), Meall Garbh (of Ben Lawers), between 2500 and 3500 feet, v.-c. 88, Mid Perth, July 16, 1913. These specimens well illustrate the species in the flowering stage, when it is a very pretty plant. Dr Moss remarked to me, in early September, that it was quite unlike the *C. alpina* of the Pennines; and this applies equally to the usual mountain plant of N. England, Wales, and Scotland, which was not observed on the Glen Lyon mountains. It ascends to about 3950 feet on Ben Lawers; the form with long, jujube-shaped pods is much scarcer than the one with ovoid fruit. There is often a suggestion of *C. danica* in the leaves, though not in the flowers.—E. S. MARSHALL.

Cochlearia danica L., *forma*. St Osyth Marshes, N. Essex. v.-c. 19, April 20, 1913.—G. C. BROWN. "Yes, it lacked personal authority in *Top. Bot.*"—G. C. DRUCE.

Sisymbrium pannonicum Jacq. A dwarf form abundant on sand dunes near Blundellsands, S. Lancs (59). July 10, 1913.—J. A. WHELDON. "Yes, a starved form of *S. altissimum* L."—G. C. DRUCE.

Sisymbrium Loeselii L. Waste Heap, N. of Welwyn Tunnel, Herts, v.-c. 20, June 16, 1913. Will probably disappear, as the waste heap is again brought into cultivation. Not recorded in Pryor's *Flora of Herts*. *S. pannonicum* Jacq. in same place, and near St Ippolyts by roadside. Will perhaps spread.—J. E. LITTLE. "Yes."—G. C. DRUCE and A. THELLUNG.

Sisymbrium officinale L., var. *leiocarpum* DC. [Ref. No. 1053.] Knaphill, Surrey, July 20, 1913. On the Bagshot Sands about Knaphill and Bisley this variety seems to be the only form of the species, but it is by no means restricted to light sandy soils, and occurs elsewhere in Surrey on the London Clay and Chalk. Though ranked as a variety in *Lond. Cat.*, it probably merits a higher status.—C. E. BRITTON. "Yes, good examples of the var. *leiocarpum*."—G. C. DRUCE. "I have seen this variety on the London Clay about Wembley, Middlesex, where it seemed to be commoner than the type."—ED. "Good var. *leiocarpum*. This variety is much commoner in America than true *S. officinale*, which is known nearly throughout the range of the variety, but only scatteringly. The true *S. officinale* has the stem and leaves densely pubescent with the same short spreading hairs as the pods, while in var. *leiocarpum* these parts are glabrous or sparsely bristly."—S. F. BLAKE.

Brassica Cheiranthus Vill. [Ref. No. 4993.] Railway bank near Yarnton, Oxon, September 1912. A new county record, but an alien. Dr Thellung names it *B. monensis* Huds., with which I gather he thinks it is synonymous. Syme (*Eng. Bot.* i., 138) makes one a subspecies of the other. They seem distinct to me.—G. C. DRUCE. Also from Corbière Station, Jersey, June 9, 1913.—A. WEBSTER.

Brassica——? Waste ground by Maltings, Hythe Quay, Colchester, June 1913. One very large plant only; leaves glaucous. Despite all precautions the leaves dried a very bad colour.—G. C. BROWN. "This is *Raphanus sativus* L."—G. C. DRUCE and A. THELLUNG.

Brassica elongata Ehrh. On railway ballast at Cavendish Dock, Barrow-in-Furness; and at Lindal Bank, Aug. 27 and 29, 1913, both stations in Lake Lancashire, v.-c. 69.—Coll. W. H. PEARSALL, Dalton-in-Furness. This name was suggested by Mr G. C. Druce; it corresponds with plants so named in my herbarium, from Rouen, Kiel, Anhalt, Saxony, Bohemia, Hungary, Transsylvania, Trieste,

South Russia, Transcaspia, Italy, and Turkish Armenia. Mr Pearsall pointed out that its most characteristic feature is presented by the narrow pale band running longitudinally round the middle of the ripe seeds. The torulose character of the ripe fruit is manifest.—C. BAILEY. "Dr Thellung has kindly determined this to be the *B. elongata* Ehrh., sub-sp. *persica* (Boiss. et Hohen.). It is also the *B. armoracioides* Czern."—G. C. DRUCE.

Brassica elongata Ehrh. [Ref. No. 371]. Railway ballast, Cavendish Dock, Barrow-in-Furness, v.c. 69 b., August 29, 1913. This E. European species is so very polymorphic that I refer my specimens to it with some diffidence. Book descriptions give "lower ls. lyrate, upper ls. toothed, long pods on short pedicels." My plants have none of these characters. They are large (2-3 ft.), much branched, twiggy, and extremely brittle. Leaves very scarce, all entire, narrowly and bluntly lanceolate, possibly the var. *integrifolia* Boiss. No lyrate radical ls. occur. The pods are markedly torulose, but can scarcely be termed "beaked." The seeds should be diagnostic—each has a well-marked narrow yellow band running completely round its longer circumference.—W. H. PEARSALL. "The pods look right for this species, but one would have liked a few leaves."—C. E. SALMON. "This also is the sub-sp. *persica*."—G. C. DRUCE.

Bursa pastoris Weber, var. *integrifolia* (Lej. et Court.). Walton, South Lancs. (59), Aug. 1, 1913. Growing amongst potatoes.—J. A. WHELDON. "Yes."—G. C. DRUCE. "I have received two sheets of this gathering; (1) judging by the shape of the capsules, is a mixture of two dissimilar forms; (2) is a small form of var. *bifida* Mott, showing some approach towards var. *rubellaeformis* Mott."—C. E. BRITTON.

Capsella Bursa-pastoris Medic., var. *bifida* Mott. [Ref. No. 580.] Lower Morden, Surrey, May 6, 1912. This is one of the most distinct forms of *Capsella*, and matches exactly an authentic plant of Mott lent me by Mr Jackson. It will be noticed that there is a tendency to bear two forms of capsules, but, as the shorter and broader form is on the *primary* stem, this difference is probably due to a variation in the vigour of the plant's vitality dependent on age, and plants of Mott's gathering show a similar peculiarity. Whether this var. is identical with the *bifida* of Crépin is uncertain.—C. E. BRITTON.

Capsella agrestis Jord. [Ref. No. 573.] Molesey Hurst, Surrey, May 5, 1912. This plant agrees well with the description of *C. agrestis* in Jordan's *Diagnoses*, p. 339, and, moreover, is identical with continental plants so labelled in *Herb. Mus. Brit.* Whilst the *London Catalogue* ignores all varieties of *Capsella Bursa-pastoris*, Mr

Druce, in his *List of British Plants*, gives ten, most of these bearing the same names as Mott's varieties. I am inclined to think that these diverse views are possibly erroneous, and, that all the British forms of Shepherd's Purse may be arranged under a small number of forms of the grade of species. Under such an arrangement, Jordan's *C. agrestis* must occupy a prominent place. An examination of type-specimens of Mott's varieties (lent me by Mr Jackson) show that *densifolia*, *stenocarpa lyrata*, *stenocarpa coronopifolia*, and the form subsequently distinguished as var. *cuneata*, are all too closely allied to each other, and to *C. agrestis* Jord. to admit of separation even as sub-varieties. Mott's named examples show that *coronopifolia* differs from *densifolia* only in the form of the radical leaves. The var. *coronopifolia* often has long acuminate or cuspidate segments, and *densifolia* has shorter bluntish segments. In spite of the figures of Mott's paper, there are no differences in the shape of the capsules of these forms, and some examples of Mott's own gathering of these vars. are quite indistinguishable from each other, either by the form of leaves or capsules. Var. *cuneata* is very well marked by its form of capsule, and perhaps comes closest to Jordan's description of *C. agrestis*.—C. E. BRITTON. "Yes, I believe it to be *C. Bursa-pastoris*, var. *agrestis* Rouy and Foucaud."—G. C. DRUCE.

Capsella gracilis Gren. Towing path by the Thames below Kingston, Surrey, May 4, 1913. This name, given to forms of *Capsella*, showing more or less incomplete development of the capsule, probably covers plants of diverse origin; some showing non-development owing to climatic conditions, and others in which loss of fertility is due to hybridity. I hesitate to so distinguish any example I send for distribution, but I have reason to believe that *C. gracilis* often represents *C. agrestis* × *C. Bursa-pastoris*, var. *bifida*. I have several examples that I so name.—C. E. BRITTON. "Grenier's plant is said to be a hybrid of *C. rubella* with *Bursa-pastoris*, the abortive silicules in these specimens point to hybridity, but have we *C. rubella*?"—G. C. DRUCE.

Coronopus didymus Sm. Roadside, nr. Saltem Cove, Churston, S. Devon, July 7, 1913.—C. WATERFALL.

Coronopus verrucarius (Gars.) Müsch. and Thell. Crookland's Brow, Dalton, v.-c. 69, Aug. 22, 1913.—D LUMB. "Yes, but it must stand as *C. procumbens*, Gilib. The trivial *verrucarius* being taken from Garsault's accidental binomial is invalid."—G. C. DRUCE.

Lepidium latifolium L. [Ref. No. 9795.] Banks of the Orwell, Ipswich, Suffolk, very luxuriant; specimens over 6 feet high occurring there, July 1913.—G. C. DRUCE.

Teesdalia nudicaulis Br. Sandy ground between Sandy and Potton, Beds, v.-c. 30, May 5, 1911.—J. E. LITTLE.

Reseda Phyteuma L. Chalky arable field near Ranmore, Surrey, where it was discovered a year or two ago by Lady Davy. Here it is in some abundance with the ordinary corn colonists, but with no other conspicuous alien. July 1913.—G. C. DRUCE.

Reseda lutea L., var. (?) [Ref. No. 64.] Grove Mill Chalk Pit, Hitchin, Herts, v.-c. 20, Nov. 2, 1913. One plant only. Full description sent to *Herb. Brit. Mus.* No examples there seemed exactly to correspond.—J. E. LITTLE. "This appears to be the var. *pulchella* J. Müll."—C. E. BRITTON. "Acced. ad var. *longifoliam* Tenore."—A. THELLUNG.

Viola silvestris Lam., var. *punctata* Druce. St Helen's, Dalton, v.-c. 69, May 13, 1912. We have an abundance of this variety, but type *silvestris* could not be found.—D. LUMB. "Yes."—E. S. GREGORY.

Viola Riviniana Reichb., forma *nemorosa* Greg. Green Haume, Dalton, v.-c. 69. So far as this district is concerned, this, as a segregate, is a complete farce, and I entirely agree with Mrs Gregory in reducing *nemorosa* to a form. I have been able to put on every sheet, I think, part of a plant showing hair on the peduncle.—D. LUMB. "The narrower leaves and less prominent calycine appendages characteristic of this form appear in Mr Lumb's plants. A scrap sent with these, having a few hairs on the peduncles, cannot be separately named."—E. S. GREGORY.

Viola Riviniana Reichb., var. *diversa* Greg. Scarth Hole, Dalton, v.-c. 69, Aug. 18, 1913. This was growing with *V. canina*, var. *pusilla*. The colours of the flowers bore a strong resemblance, except in those of the spurs. The *canina* blue evidently fades less in drying.—D. LUMB. "Capital examples of my var. *diversa*."—E. S. GREGORY.

Viola Riviniana Reichb., forma *minor* Murbeck (coloured spur). Housethwaite Hill, Dalton, v.-c. 69, May 14, 1913, and with white spur, Green Haume, Dalton, v.-c. 69, May 10, 1913.—D. LUMB. "Both forms belong to forma *minor*. In this the spur-colour varies considerably."—E. S. GREGORY.

Viola Riviniana Reichb., forma. Fordham Heath, v.-c. 19, May 14, 1913.—G. C. BROWN. "The tiny scraps I have received are too small to be named."—E. S. GREGORY.

Viola canina L., var. *sabulosa* Reichb. Codicote, High Heath, Herts, v.-c. 20, May 1, 1913. See Gregory's *Brit. Violets*, p. 79. Also in very small quantity at Mardley Heath, Herts, where I gathered it in 1912, and submitted specimens to Mrs Gregory, with others from the above locality.—J. E. LITTLE.

Viola canina L., var. *lanceolata* Martrin-Donos. Menmarsh, Oxford, in an interesting habitat with *Genista tinctoria*, *Habenaria Gymnadenia*, *Orchis maculata* vera, and var. *trilobata*. It shuns the more marshy and basic soil, preferring the better drained portions. May 1913.—G. C. DRUCE. "Yes, the plant described on p. 80 of *British Violets*."—E. S. GREGORY.

Viola canina L., var. *pusilla* Bab. Sandscale, Dalton, v.-c. 69, Aug. 18, 1913.—D. LUMB. "Rightly named."—E. S. GREGORY.

Viola sepincola Jord. [Ref. No. 81]. Clayey banks, Edwardstone, W. Suffolk, v.-c. 26, March 23, 1913, and April 23, 1913. Flowers purplish, scentless, associated with *Viola odorata*, and forma *albiflora*.—G. C. BROWN. "Probably one of the many hybrids of *V. hirta* × *odorata*, but nearer to *permixta* than *sepincola*, as shown by the broader leaves."—E. S. GREGORY. "This seems to me to be *V. hirta* × *odorata*, f. *subhirta*."—G. C. DRUCE.

NOTE.—If violet collectors desire to come to a better understanding of this rather difficult genus, let them gather fuller specimens, showing habit above and below ground, and having labelled the plants, go later, for fruiting examples of the same. A third visit in July or August will add considerably to their knowledge of the plant's life-history.—E. S. GREGORY.

Viola derelicta Jord. [Ref. No. 49]. Field, Auldbar, Forfar, July 30, 1913.—R. and M. CORSTORPHINE. "Like what Dr Drabble has so named for me."—E. S. MARSHALL. "Yes, beautiful specimens."—E. DRABBLE.

Viola lepida Jord. Origin, Carnforth, West Lancs. (60), cultivated Walton, Aug. 1, 1913. After cutting the shoots sent to the Club last year, the roots were planted in my garden, and yielded these specimens. They are perennial, the roots ramifying a good deal in the ground, and sending up fresh shoots.—J. A. WHELDON. "It suggests *lepida* × *Lloydii*."—E. DRABBLE.

Viola——? Sandy field by the sea, Ballywater, Co. Down, June 1913.—C. H. WADDELL. "*V. lepida*."—E. DRABBLE.

Viola lepida Jord. [Ref. No. 40.] Cliffs, Lunan Bay, Forfarshire, v.-c. 90, June 21, 1913. Growing on the cliffs in luxuriant

masses, the yellow pansy not nearly so abundant as the purple.—
R. and M. CORSTORPHINE. "Yes."—E. DRABBLE.

Viola variata Jord. (Fide E. Drabble). [Ref. No. 32.] Upland
pasture growing with *Viola lutea* in Glen Clova, alt. 770 feet, v.-c. 90,
May 1913.—R. and M. CORSTORPHINE. "Yes."—E. DRABBLE. "This
reminds me of *V. lutea*, forma *amœna*."—E. S. MARSHALL.

Viola variata Jord. Roadside, Foxfield, v.-c. 69, May 14, 1913.—
D. LUMB. "*V. Lejeunii* Jord."—E. DRABBLE.

Viola agrestis Jord. [Ref. No. 54.] Waste ground, Bridge of
Dun, Forfar, v.-c. 90, July 1913.—R. and M. CORSTORPHINE. "Yes."
—E. DRABBLE.

Viola ruralis Jord. Garden weed, Dalton, May 27, 1913. These
plants have the terminal lobe of the stipule with a much broader
attachment than that of the Askam ones.—D. LUMB. "Yes."—E.
DRABBLE.

Viola ruralis Jord. Railway side, Askam, v.-c. 69, May 31, 1913.
The terminal lobe of the stipule is here considerably narrowed at its
base, giving it a more leaf-like appearance than in the Dalton
specimens.—D. LUMB. "Yes."—E. DRABBLE.

Viola ruralis Jord. [Ref. No. 37.] Cliffs, Arbroath, v.-c. 90,
June 21, 1913.—R. and M. CORSTORPHINE. "No, not *ruralis*. It
appears to be *agrestis*, but is not very typical."—E. DRABBLE.

Viola obtusifolia Jord. [Ref. No. 46.] Cornfield, Usan, Forfar-
shire, v.-c. 90, July 12, 1913. All the plants were quite unbranched,
but this looks like a very young condition of *V. obtusifolia*.—R. and
M. CORSTORPHINE. "Yes."—E. DRABBLE.

Viola obtusifolia Jord. Crooklands, Dalton, v.-c. 69, Aug. 29,
1913. I am not sure that all these specimens represent the same
plant.—D. LUMB. "Yes."—E. DRABBLE.

Viola arvensis Jord. [Ref. No. 60.] Cultivated field near
Arbroath, Forfar, October 15, 1913. R. and M. CORSTORPHINE.
"Yes."—E. DRABBLE.

Viola (?) *subtilis* Jord. Dalton, N. Lancs., Aug. 14, 1913.—D.
LUMB. "*V. segetalis* Jord."—E. DRABBLE.

Viola arvensis Murray. [Ref. No. 362.] Welland, Worcester,
v.-c. 37, Sept. 25, 1913. Coll. R. F. TOWNDROW; Comm. S. H.
BICKHAM. "*V. contempta* Jord."—E. DRABBLE.

Viola—? Crooklands, Dalton, v.-c. 69, Aug. 7, 1912.—D. LUMB. "Only part of a plant; no roots sent. Probably *V. Lloydii*."—E. DRABBLE.

Viola Curtisii Forst. Sandhills, Askam, v.-c. 69, May 10, 1913. Dr Drabble describes the terminal lobe of the stipule as entire. These specimens show that it may have as many as four indentations. It would have been quite easy to gather a set to fit Forster's description as given by Mr Druce, *Report* for 1909, p. 440. These small-flowered plants all occur in the sheep-cropped turfs. Within a yard of this, however, where nursed by marram grass and *Rosa spinosissima*, large plants occur bearing flowers eleven lines long. One or two plants had a considerable amount of lilac colour in the flowers, but on the same plants flowers ordinarily coloured occurred.—D. LUMB. "Probably *Curtisii*, but no underground parts are present in specimens sent to me."—E. DRABBLE.

Viola Curtisii Forster. Sandy coast, Dog's Bay, near Roundstone, Galway W., Aug. 14, 1913.—W. C. BARTON. "Yes."—E. DRABBLE.

Viola—? [Ref. No. 100.] Bromeswell Walks, v.-c. 25, May 12, 1913.—G. C. BROWN. "*V. Curtisii* Forst. (in a broad sense)."—E. DRABBLE.

Viola Pesneauri E. G. Baker. Sandscale, Dalton, v.-c. 69, May 12, 1913. I have divided my gathering into two classes, in each of which there are similar varieties of colours, so that it is not easy to see how correlation can be established. The characters of these groups are:—(1) ciliate lamina, large palm, and dark flower go together, but the 2nd and 3rd characters frequently break down; pale flowers are quite uncommon here. (2) non-ciliate lamina, small palm, and paler flowers go together, but the 2nd and 3rd characters frequently break down; the pale flowers are much more common here.—D. LUMB. "Dr Drabble reports as regards the specimens with the lamina margin ciliate, that if they represent whole plants they are very young, and that there is no characteristic subterranean stem. In the specimens with the lamina margins non-ciliate, no underground parts are shown."—Ed.

NOTE.—Dr Drabble wishes it to be understood that his naming of pansies only refers to the plants actually seen by him.—Ed.

Dianthus deltoides, var. *glaucus* L. Origin, Deganwy nr. Conway, June 27, 1913.—S. H. BICKHAM. "In the dried state it is difficult to say whether the foliage is glaucous. Syme says the involucre scales are generally four in *glaucus*; in *deltoides* only two."—G. C. DRUCE.

Silene anglica L. (flower pink). [Ref. No. 120]. Waste ground, Hythe Quay, Colchester, v.-c. 19, June 16, 1913.—G. C. BROWN. "Is not this *S. gallica* L.?"—G. C. DRUCE.

Silene anglica L., var. *quinquevulnera* L. Top of West Mount, St Helier's, Jersey, flower almost past, June 11, 1913.—A. WEBSTER.

Silene pendula L. Newquay, W. Cornwall, v.-c. 1, June 5, 1912. All these specimens and about a dozen more are from one fine plant near a fowl-run in a cottage garden. I also gathered a small plant at Par in 1912.—C. C. VIGURS. "Yes, Dr Thellung so named my specimens from Par, gathered in 1910."—G. C. DRUCE.

Lychnis Preslii Sekera. From a root of the original plant discovered by Miss Trower in 1910 at Tantallon, Haddington. In my garden, cultivated side by side with *dioica*, it keeps distinct. This is the female plant. It has been recorded from Kost in Hungary. (See *Report* p. 13, 1911). If the genus *Lychnis* L., be divided according to Dalla Torre (*Gen. Siphon*), the name of this plant is *Melandrium Preslii* Nyman *Suppl. Syll.* 41 (1865). Dr Domin, I believe, has had it arise in cultivation as a mutant.—G. C. DRUCE.

Cerastium—? [Ref. No. 3781.] Locally plentiful at 3000 feet in the great eastern corrie of Ben Lawers, v.-c. 88, Mid Perth, July 10, 1913. Stems prostrate; flowers large, solitary, or more rarely two together; amount of pubescence variable, but less than in our ordinary form of *C. alpinum* L. It has very much the aspect of what we have been calling *C. arcticum* Lange (Dr Moss tells me that this must be named *C. Edmondstonii* Ostenfeld), which was seen not far off, but I am doubtful whether it is that species or a variety of *C. alpinum*, and at this early stage determination is difficult. It may be what Syme intended by his var. *pubescens*. In any case, I am almost sure that the present plant is not a hybrid.—E. S. MARSHALL. "Is not this *C. alpinum* L., figured in *Eng. Bot.* vii. t. 472 (1798)?"—C. E. SALMON.

Cerastium semidecandrum L., var. *glandulosum* Koch. Sandhills, by Hightown Station, South Lanes, v.-c. 59, June 30, 1913. A prostrate, much-branched but compact form, which on account of its highly glandular nature may, perhaps, be named as above. Some of the plants seen were larger and denser than those now distributed. *C. tetrandrum* also occurred at the same spot, with exactly the same habit.—W. G. TRAVIS. "Yes."—G. C. DRUCE.

Cerastium tetrandrum Curt., *forma*. Sand dunes, Ainsdale, S. Lanes., June 1913. This form differs from the common form, which is much more abundant, in its prostrate habit, and its more numerous

densely intricate stems. It grows in large mats which are difficult to separate, and disentangle for drying. The panicle branches are strongly divaricately dichotomous.—W. G. TRAVIS and J. A. WHELDON. "I know of no name for this glandular sand-hill form of *tetrandrum*. Not var. *dunense*. The label does not state if plant is erect or prostrate."—C. E. SALMON. "Yes, a divaricate form of *C. tetrandrum* with somewhat long internodes."—G. C. DRUCE. "*C. tetrandrum*."—A. BENNETT.

Stellaria media Vill., var. *Boracana* (Jord.). Sandy ground, Formby, S. Lancs., v.-c. 59, April 14, 1913.—W. G. TRAVIS. "Under *S. apetala* Ucria."—E. S. MARSHALL. "I agree; often a plant of poor sandy soil."—C. E. SALMON. "Yes, *apetala* retains the older trivial; comparative cultivation in rich soil is needed to decide its true grade."—G. C. DRUCE.

Stellaria neglecta Weihe. Narborough Bog, near Leicester, May 1913.—A. R. HORWOOD. "Yes."—E. S. MARSHALL. "Seems correct so far as the habit, etc. goes, but it is impossible in the specimens to see the relative length of the calyx and corolla."—A. BENNETT.

Stellaria media Vill., var. *major* Koch *Syn.* 118, (1837.) [Ref. No. 9811]. Huscote, Northants, June 1913. Relying upon the seed characters, rather than the habit, I am inclined to place this plant with *S. neglecta* Weihe, under *media*, rather than to ally it with *umbrosa*, from which it also differs in its hairy pedicels. This too is its position in Groves' edition of *Babington's Manual*.—G. C. DRUCE.

Sagina saginoides Dalla Torre. Perthshire, mountain N. of Killin, July 31, 1912. May be distinguished, apparently, from all forms of *procumbens* (and I include *scotica* in this—with which it grew) by its more compact growth, larger capsule and peculiar curve of pedicel. The colour of the foliage (lost in drying, somewhat) also seems a good character.—C. E. SALMON.

Sagina maritima Don, var. *prostrata* Towns. Sea wall by the Mersey, Garston, S. Lancs., v.-c. 59, July 18, 1913. This plant, which has the appearance and colour of *S. maritima* when growing, differs markedly from that species in having a distinct central rosette, around which the prostrate stems radiate, closely appressed to the ground. It is also more densely setose than any form of *S. maritima* we have met with. We have never seen Townsend's variety, but it agrees with the description so far as it goes. It seems very unusual for *S. maritima* to produce a central rosette, but as *S. procumbens* sometimes produces a flowering central stem, there is no reason why *S. maritima* should not vary in the opposite direction.—

W. G. TRAVIS and J. A. WHELDON. "Townsend described his var. in *Report* for 1894, p. 438. This agrees in its prostrate habit, and glabrous dark green leaves. The leaves, however, are not conspicuously blunt, and the calyx is not closed in fruit. Townsend's specimen is young."—G. C. DRUCE.

Spergularia salina Presl, var. *c. neglecta* (Syme). Edge of pool, Lihou Island, Guernsey, August 13, 1912. Growing at the water's edge; upright and bright green. In the living state a beautiful little plant, and different from any other *neglecta* I have seen.—W. C. BARTON. "Very young, but probably correct."—G. C. DRUCE. "There seems to be confusion in the nomenclature of these forms. Kindberg Syn. Främst ap. Växt Lepigonum (quoted by Syme as Symb. ad Syn. Gen. Lep.), Upsala 1856, describes *Lepigonum neglectum* as nova species; but in his *Monographia generis Lepigoni*, Upsala 1863, he describes *Lepigonum salinum* (Presl), and gives as synonyms *Spergularia salina* Presl, *Lepigonum neglectum* Kindb., *Lepigonum salinum* Fries, *Lepigonum medium* Garcke; and adds that Presl, in describing *Spergularia salina*, expresses verbis adnotat "semina tuberculata esse." Can *S. salina* Presl stand with seeds not papillate, and can var. *neglecta* (Syme) or *neglecta* (Kindberg) be distinguished by papillate seeds? Again in his *Monograph* Kindberg writes of *Lepigonum salinum* (Presl) "caules humiles saepissime ramosissimi valde divaricati prostrati rarius simplices erecti compressi glabrescentes v. superne glanduloso pubescentes." Can Hooker's distinction (*Stud. Fl.*) "*Lepigonum neglectum* Kindb. glandular above" and Babington's (*Manual* Ed. IX) "*L. neglectum* (Kindb.) is glandular" be justified? Syme *E. B.* shows little confidence in his varieties, and I am inclined to think the character of seeds papillate or smooth, of length of pedicel, and of glabrescence or glandulosity may be combined in any way; and that these characters are of less than varietal value."—W. C. BARTON.

Spergularia salina Presl, var. *neglecta* (Syme). Sea shore, Keyhaven, S. Hants, v.-c. 11, Aug 1913.—J. COMBER. "Yes, so I should say. Townsend reported it from the same station, *Fl. Hants.*"—C. E. SALMON. "Yes, but the authority is not Syme but Kindberg."—G. C. DRUCE. "*S. neglecta* Syme; but see above."—W. C. BARTON.

Spergularia salina Presl, var. *b. media* (Syme). Salt marshes, Keyhaven, S. Hants, July 1913.—J. C. MELVILL. "Is this not rather the var. *neglecta*? The seeds are papillate."—G. C. DRUCE. "This surely is *neglecta* Syme exactly. His var. *media* has all pedicels shorter than the leaf-like bracts, and scarcely as long as the capsule, and seeds without distinct papillae."—W. C. BARTON.

Spergularia atheniensis Aschers. Par, E. Cornwall, July 12, 1913, Aug. 28, 1913, and Nov. 25, 1913. Better specimens than those sent last year. I cannot agree that a central rosette of leaves is always absent.—C. C. VIGURS. "Yes, mine is an excellent example."—C. E. SALMON. "Of the two sheets I have seen (1) Oct. 25, 1913, approaches my No. 39; (2) July 12, 1913, varies towards *S. salina*."—W. C. BARTON.

Spergularia atheniensis Asch. and Schw. [Ref. No. 10001.] See Report 1906, 196; 1912, 238. L'Erée, Guernsey. Locally plentiful, Aug. 1, 1913. Growing in partial shade and shelter.—G. C. DRUCE. "This has the seeds of *S. atheniensis*, but in all other respects agrees very closely with my No 42 gathered in the same spot in 1912. I still doubt its being true *atheniensis*, which is described "cyma densiflora subaphylla, pedunculis capsulam vix aequantibus vel ea brevioribus." It differs from my No. 39 (and No. 590 De Heldreich *Herb. Graec. Norm.*) in the larger flowers (4—5 mm. as compared with $2\frac{1}{2}$ —3 mm.), and longer pedicels $1\frac{1}{2}$ —2 times as long as capsule. In these respects it approaches *S. salina*. I have a series of forms connecting my No. 39 and No. 42, and am inclined to think these forms are due to crossing between *S. atheniensis* and *S. salina*. (See Report for 1912, p. 239.)—W. C. BARTON.

Polycarpon tetraphyllum L. Bel Royal, Jersey, June 7, 1913. I gathered this plant in three localities—St Aubin's, Bel Royal, and the Waterworks Valley, Jersey, and should be glad to know if they are all the same variety of *P. tetraphyllum*.—A. WEBSTER.

Claytonia parvifolia Moç. (*C. filicaulis* Douglas.) Wood walk, Sagram Hall, Preston, W. Lancs., June 6, 1913.—S. H. BICKHAM.

Hypericum—? [Ref. No. 3787.] Roadside banks between Lawers and Fearnan, v.-c. 88, Mid Perth, Sept. 4, 1913. This was first noticed, in bud, on July 14, by Messrs Salmon, Shoolbred, and myself. A smaller state occurs near Fortingal. On July 28, it was seen in full bloom, but I then omitted to gather it, being in a hurry. Afterwards, Dr Moss and I collected it by that time almost out of flower. Clearly it comes very near to what has been named *H. maculatum* Crantz, *H. dubium* Leers, or *H. quadrangulum* L. (this I have seen, well-marked, between Blair Atholl and Killiecrankie); but it is much weaker, has smaller blossoms of a paler yellow, and there are few (if any) pellucid dots on the leaves.—E. S. MARSHALL. "Is this not *H. quadrangulum* L., var. *punctatum*? I see there are a few dots among the translucent veins."—G. C. DRUCE. "Variety *punctatum* Schinz (*Bull. Herb. Boiss.* 1903, p. 22) has leaves with numerous pellucid dots."—ED.

Athæa hirsuta L. Hort. Reigate. Origin, Chalk Downs, near Reigate, July 1913.—C. E. SALMON.

Lavatera arborea L. Steep rocky hillside, Durl Head, near Brixham, S. Devon, June 15, 1913.—C. WATERFALL.

Geranium versicolor L. Haverthwaite, v.-c. 69 b, Aug. 2, 1913. Now securely established where railway line skirts the edge of a wood. A new record for 69 b.—W. H. PEARSALL.

Geranium lucidum L. (seedlings). St Helens, Dalton, Lancashire, v.-c. 69, Nov. 11, 1913.—D. LUMB.

Geranium Robertianum L. [Ref. No. 9798.] A small-flowered *Robertianum* from Ballyvaughan, Co. Clare, but not the var. *Villarsianum* which I gathered in 1911. (See *New Phyt.* 1911, p. 325.) This grown near our midland plants in my garden retains a facies of its own.—G. C. DRUCE.

Geranium Robertianum L. (seedlings). Birkrigg, Ulverston, v.-c. 69. Drawn up in cracks of limestone pavements. May 24, 1913.—D. LUMB.

Geranium Robertianum L., var. *purpureum* (Vill.)? [Ref. No. 3910.] Plentiful (chiefly on limestone screes) in the upper part of Cheddar Gorge, v.-c. 6, N. Somerset, Sept. 19, 1913. Limb of the small, bright, rose-coloured petals usually shorter than the claw; anthers orange; ped. and calyx glandular, the latter with a few white, spreading, unequal hairs; carpels hardly at all rugose, with a few short hairs towards their apex. This is referred to var. "*purpureum* auct. angl." in the *Flora of Bristol*, p. 217 (1912). I formerly thought the Cheddar plant to be var. *modestum* (Jord.), but the carpels and other characters, according to Rouy and Foucaud, *Fl. de France*, iv., pp. 96-7 (1897), agree better with their *G. purpureum* a. *genuinum*.—E. S. MARSHALL. "The carpels are glabrous, and I think it comes under this."—G. C. DRUCE.

Geranium purpureum Vill. St Brelade's, Jersey (vide Lester-Garland's *Flora of Jersey*). Coll. E. W. HUNNYBUN, June 2, 1913; Comm. S. H. BICKHAM.

Rhamnus catharticus L.? (*R. Villarsii* Jord.). Limestone scars near Warton, W. Lancs., Sept. 15, 1913.—A. WILSON and J. A. WHELDON. "This should be compared with *R. Hydriensis* Hacq. ex Rouy and Foucaud, *Fl. Fr.* iv., 166 (1897). These authors make no reference to *R.*

Villarsii Jord."—G. C. DRUCE. "This plant is pubescent, and therefore cannot be *R. Hydriensis* Hacq., which is described as having leaves entirely glabrous and attenuate at the base."—ED.

R. catharticus L. No. 2—Near Hawes Water, Silverdale, alt. 30 feet. No. 3—Dusty roadside, Silverdale, W. Lancashire, v.-c. 60, alt. 150 feet. Both localities on the scar limestone. After examining a large number of trees in the Silverdale district we find that the amount of hairiness of the leaves and peduncles varies somewhat according to the habitat. The tree from which the specimens marked No. 3 were taken was growing in dry shallow soil immediately over the limestone rock. The leaves of this tree were smaller and of a paler green than those of other trees (see specimens marked No. 2) growing in damper situations in the same neighbourhood, and the tree was smaller and less robust, no doubt owing to the shallow soil. The dust from the road had also increased the hoary appearance. Our reason for gathering the three sets of specimens, viz., those marked Nos. 2 and 3 from Silverdale, and the one from Warton Crag (which is the least hairy), is to ascertain whether the plant from Silverdale named var. *Schræteri* by Mr Druce is distinct from our common form of *R. catharticus* as known in West Lancashire and other parts of the North of England. Specimens gathered at Clapham and elsewhere in Yorkshire are also hairy. Are any of these forms referable to *R. Villarsii* Jord., said to be a hairy form of *R. catharticus*, and is any of the British *R. catharticus* glabrous? Smith in *Eng. Flor.* Vol. I, p. 328, says "Leaves . . . smooth. The young ones downy. Footstalks downy."—J. A. WHELDON and A. WILSON. "No. 3 is my var. *Schræteri* (see *New Phyt.* 311, 1911). No. 2 is intermediate between it and type."—G. C. DRUCE. "I have examined all the British and European material of *R. catharticus* at the British Museum and Kew, and find a great variation in the amount of pubescence, but absolutely glabrous plants seem to be quite rare."—ED.

Genista tinctoria L. [Ref. No. 9812.] Easton on the Hill Quarries, Northants, July 1913. In great quantity, and, as was the case with all yellow flowered plants in 1913, in profuse blossom. Curiously this plant was omitted from the first edition of *Top. Bot.* for Northants, notwithstanding there were specimens in *Herb. Linn.* and *Herb. Brit. Mus.* from "marshy places in Naseby fields" labelled *G. humifusa*. This was first recorded in Mastin's *History of Naseby*, p. 40 (1792), in which it says "the plant was never found in England before [it was] discovered by Mr Dickson in 1788." Unfortunately all Dickson specimens I have seen are without fruit. It would seem that Babington must have had a fruiting specimen before him since he reduced (*Manual* 1847, p. 73) *G. humifusa* Dicks. to a var. of *tinctoria*, his italicised distinguishing characters are "pods hairy on the backs." Babington only gives the Lizard district as yielding it,

overlooking its original habitat, if, indeed, he was not misled by its superficial resemblance to the Lizard plant, which has the pods as described. I have so far been unable to re-discover it at Naseby, but all the Northamptonshire plants, including those now distributed, have glabrous pods. *G. humifusa* Dickson cannot stand, there being already a Linnean species of the same name.—G. C. DRUCE.

Genista tinctoria L., var. East Pentire, Newquay, July 7, 1913, and Aug. 2, 1912. In Cornwall we generally call this prostrate form var. *humifusa* Dicks., but I have never seen any hairs on the back of the valves, so have some doubt about it.—C. C. VIGURS. "Dr Vigurs does not mention on the label any remarks as to habit, but this looks to me to be var. *prostrata*, Bab. *Man.* p. 70, 1843 (non Lamk.), altered in the second edition (1847) to var. *humifusa* Dicks. Rouy and Foucaud (*Fl. Fr.*) seem, somewhat unnecessarily, to adopt the name var. *littoralis* Corb. *Fl. Norm.* p. 144 (1893) for this plant, apparently because there is a *G. humifusa* L. already existing, but it has nothing to do with this variety or its species."—C. E. SALMON. "This is not var. *humifusa* Bab., as the fruit is quite glabrous."—G. C. DRUCE. "Cf. var. *littoralis* Corbière."—A. THELLUNG. "Only a reduced state, I think; pods glabrous."—E. S. MARSHALL. "Agrees with the description of the var. *littoralis* Corbière."—ED.

Ononis reclinata L. Dry limestone soil facing sea, Daddy Hole Plain, Torquay, S. Devon, June 6, 1913.—C. WATERFALL.

Ononis spinosa L., *flore albo*. Avebury Down, N. Wilts., v.-c. 7, August 5, 1913.—W. C. BARTON.

Medicago—? Canal bank, Ford, S. Lancs., v.-c. 59, Sept. 20, 1913.—J. A. WHELDON. "*Medicago polycarpa* Willd.? (*M. hispida* Gaertn.) (*M. denticulata* auct.)."—C. E. BRITTON. "*M. hispida* Gaertn., var. *apiculata* (Willd.) Burnat."—A. THELLUNG.

Medicago arabica Huds. [Ref. No. 378.] Kingsbridge, S. Devon, June 7, 1913. Am sending these to show that the plant is not glabrous. I should describe it as "nearly glabrous, *petioles pilose*." Mr Druce has amended his description in this particular.—W. H. PEARSALL.

Medicago lupulina L. Seedlings, Greenseer, Dalton, v.-c. 69, May 9, 1913.—D. LUMB.

Melilotus altissima Thuill. Chalk pit, Grove Mill, Hitchin, Herts, v.-c. 20, Oct. 8, 1912.—J. E. LITTLE.

Melilotus alba Desv. Gravel pit on the Riddy Lane, Hitchin, Herts, v.-c. 20, July 9, 1911.—J. E. LITTLE.

Melilotus arvensis Wallr. Waste heap, N. of Welwyn Tunnel, Herts, v.-c. 20, 1913.—J. E. LITTLE. Also seedlings, Ironworks, Askam, v.-c. 69, May 10, 1913.—D. LUMB.

Melilotus indica All. (a) Near Grove Mill, Hitchin, July 1908; (b) West Hill, Hitchin, Oct. 15, 1910; (c) Benstow and Purwell, Hitchin, July and August 1912; (d) N. of Welwyn Tunnel, Herts, v.-c. 20, Sept. 9, 1912; (e) near Shingay, Cambs., Sept. 11, 1912. Generally distributed in the neighbourhood of Hitchin. Slow to ripen seed.—J. E. LITTLE.

Trifolium incarnatum L., var. *stramineum* (Presl). [Ref. No. 9778.] Appleton, Berks, July 1913. Prof. Percival agrees to the name. It is now frequently cultivated, having a different flowering period from the type. See *Fl. Berks.*, 139 (1897).—G. C. DRUCE. "Is this more than an albinism?"—E. S. MARSHALL.

Trifolium Molinerii Balb. Rocks at Janvrin's Tomb, Jersey, June 9, 1913.—A. WEBSTER.

Trifolium strictum L. Near St Brelade's, Jersey, among a profusion of *Lotus hispidus*, June 11, 1913.—A. WEBSTER.

Trifolium glomeratum L. Between La Moye and Corbière Stations, Jersey, June 9, 1913.—A. WEBSTER.

Lotus corniculatus L., var. *crassifolius* Pers. Sand dunes, Formby, S. Lancs., v.-c. 59, July 1912. Referred with some doubt to the variety mentioned, with which it agrees in respect to the small fleshy leaves, but is not the var. *crassifolius* Pers. glabrous? I should be glad if some member would quote the original description. Attention may be called to the shape of the sepals in my plant, which are shorter and more abruptly acuminate than in the type, where they are subulate from a triangular base. If my plants are correctly referred to the variety *crassifolius*, I am satisfied that it cannot be dismissed as a mere state, as is sometimes done.—W. G. TRAVIS. "Yes, a form I suppose, rather than a true variety. Why not test it in culture? Persoon (*Syn.* ii., 354, 1807) describes it as "pilosus, foliol. ovatis carnulosis, caulib. foliosis prostratis, radice crassa fibrosa."—G. C. DRUCE.

Vicia sylvatica L. By the Allt Odhar, at 700 feet, Fortingal, v.-c. 88, Mid Perth, July 26, 1913. Locally plentiful, and very fine. As it has dried nicely, a few members may be glad to have specimens

of this beautiful plant, which was only observed in one other station, and seems to be scarce in that neighbourhood.—E. S. MARSHALL.

Vicia villosa Roth. [Ref. No. 9272.] Alien, Lenslade, Bucks, where it has been established for many years, July 1913.—G. C. DRUCE. "*Vicia villosa* Roth."—J. A. WHELDON. "This is not the true *V. villosa* Roth, but *V. dasycarpa* Tenore, as is the plant from Malvern Links, R. F. Towndrow, 1906."—G. C. DRUCE. "*V. dasycarpa* Ten."—A. THELLUNG.

Vicia pseudo-Cracca Bert. [Ref. No. 190.] Clay Pits, Great Bentley (a large patch), v.-c. 19, Aug. 14, 1913. Flowers a deep rich purple, which has largely vanished in drying. I received plants exactly resembling this from Yiewsley, Middlesex, June 2, 1911, and also found one plant in a wheat field at Vivley, N. Essex, 1910.—G. C. BROWN. "No, this is *V. varia* Host., in good condition for naming. *V. pseudo-Cracca* has larger pods and flowers, with standard much longer than wings."—C. E. SALMON and A. THELLUNG.

Lathyrus montanus Bernh., var. *tenuifolius* (Reichb. f.). Roborough Down, near Yelverton, S. Devon, June 1913. Coll. Miss COMBER; Comm. J. COMBER.

Potentilla norvegica L. Alien in clover field, Walton, S. Lancs, v.-c. 59, July 10, 1913. Scattered thinly over a large field, and probably spread with seed or manure. It seeds early and very freely.—J. A. WHELDON. "Cf. *P. intermedia* L."—A. THELLUNG.

Potentilla intermedia L. Mildenhall, v.-c. 26, W. Suffolk, June 7, 1913.—W. C. BARTON. "Yes."—A. THELLUNG.

Potentilla fruticosa L. In abundance on north bank of river Tees near Langdon, alt. 1240 feet, v.-c. 66, July 6, 1913.—J. CRYER. "Beautifully dried."—ED.

Poterium polygamum Waldst. and Kit., b. *platylophum* (Jord.) Field near Easthaven, v.-c. 90, Oct. 6, 1913.—R. and M. CORSTORPHINE. "Yes."—G. C. DRUCE.

Poterium polygamum Waldst. and Kit. (*P. muricatum* Spach). On an embankment of the Port and Pier Railway, Sea Mills, W. Glam., June 20, 1913.—J. W. WHITE.

Rosa globularis Franch. [Ref. No. 1127.] Copt Hill, near Burgh Heath, Surrey, Sept. 14, 1913.—C. E. BRITTON. "Best here, but the tendency to glands on the peduncle takes it towards *R. inconspicua* Déségl."—A. H. WOLLEY-DOD.

Rosa—? Dovedale, Derbyshire, Aug. 22, 1913. This rose, for which I have not yet received a determination from Dingler, is, I believe, the one which has been labelled *R. caesia* Sm. by several collectors. It has little in common with that species, except more or less hairy leaves, and hispid peduncles, but quite lacks the habit and woolly styles. This bush was 8-9 ft. high, with the habit of strong *canina* forms. Similar bushes are quite common all over the adjacent country, and it may deserve a distinctive name.—A. H. WOLLEY-DOD.

Rosa andegavensis Bast. [Ref. No. 1114.] North Downs, South of Horsley, Surrey, v.-c. 17.—C. E. BRITTON. "Yes, the typical form with hispid styles."—A. H. WOLLEY-DOD.

Rosa adscita Déségl. [Ref. No. 1090.] Open ground, Malden, Surrey, v.-c. 17, Aug. 20, 1913.—C. E. BRITTON. "Correct."—A. H. WOLLEY-DOD.

Rosa fetida Bast. [Ref. No. 1116.] Downs, South of E. Horsley, Surrey, Sept. 7, 1913. The examples I send under this name differ from descriptions of *R. fetida* in possessing hairy styles. Otherwise they seem to me to agree with descriptions of Bastard's species.—C. E. BRITTON. "Probably correct, but with hairy styles. It differs from *R. scabriuscula* Sm. in the presence of sub-foliar glands, and from *R. tomentosa*, var. *sylvestris* Woods in its more hairy and less glandular leaflets and straightish prickles."—A. H. WOLLEY-DOD.

Rosa Rothschildii Druce. Malden, Surrey, 1911. These examples seem identical with the rose from the same locality identified by Mr Druce as belonging to his species (See *Report* for 1912, p. 157).—C. E. BRITTON. "This is certainly correct."—A. H. WOLLEY-DOD.

Pyrus Pyrastrer L. Solitary tree, Stanway, v.-c. 19, April 24, 1913. A tradition exists that until 40-50 years ago this tract of land was unenclosed heath with scattered cottages. This tree standing beside the present road may well have been in one of the cottage gardens. However, the fruit has quite reverted to the wild type, and the tree is very large, though apparently not of great age. Height about 50 feet. Despite all precautions I have been unable to keep these specs. a good colour.—G. C. BROWN. "The *P. communis* L. var. *Pyrastrer* (Boreau)."—G. C. DRUCE. "The nomenclature of the varieties of *Pyrus communis* has been much confused. The name *Pyrastrer* is applied to both glabrous and hairy leaved plants. Mr Brown's specimens have the adult leaves glabrous, which makes it *P. Pyrastrer* Bor., but as a variety of *P. communis* L. the proper citation is *P. communis*, var. *Pyrastrer* Wallr. *Sched. crit.*, p. 214 (1822) = *P. Achras* Gaertn. now *P. communis*, var. *Achras* Wallr. The descriptions in the British Floras require emendation."—ED.

Pyrus pinnatifida Ehrh. (*P. Aucuparia* × *intermedia*). With the assumed parents, Weston Wood, Albury Park, Surrey, Sept. 29, 1913.—A. B. JACKSON. My statement in the *Albury Park Catalogue of Trees and Shrubs*, p. 56, that this is probably a cross between the mountain ash and white beam is a slip. Most modern authors consider the parentage as above.—Ed. "*P. intermedia* is not mentioned at all as occurring in the Park. I think *P. Aucuparia* is a doubtful native of Surrey (as in Kent), and *P. intermedia* is not indigenous in the South of England. It occurs in plantations on Leatherhead Downs."—C. E. SALMON.

Pyrus Aria Ehrh., seedlings. Millwood, Dalton, v.-c. 69, May 10, 1913. Some seedlings of *Crataegus oxyacantha* are probably interspersed here. I failed to separate them with certainty.—D. LUMB.

Crataegus oxyacantha L. The Haggs, Dalton, Lancs., v.-c. 69, May 10, 1913. Some seedlings of *Pyrus Aria* are probably interspersed here.—D. LUMB.

Crataegus monogyna Jacq., var. Wood, Bucks, Essex, v.-c. 19, June 4, 1913.—G. C. BROWN.

Sedum Drucei Graebner. See *Report* 1912, p. 160. Rollright, Oxon. Flowering specimens to supplement those distributed last year. When in the Auvergne in May I saw at Le Puy the continental *S. acre*, which is a more caespitose erect plant, with larger and more swollen leaves.—G. C. DRUCE.

Callitriche—? [Ref. No. 368.] Ditch, Barnes Green, near Malvern, Worcester, July 22, 1913.—S. H. BICKHAM and R. F. TOWNDROW. "Is *C. stagnalis* Scop."—J. GROVES.

Callitriche—? [Ref. No. 370.] Castle Newton Common, Worcester, July 29, 1913. "*C. stagnalis* Scop."—J. GROVES. "Is this not *C. palustris* L.?"—G. C. DRUCE.

Callitriche stagnalis Scop. Huscote, Northants, June 1913.—G. C. DRUCE. "Yes."—J. GROVES.

Callitriche stagnalis Scop. [Ref. No. 9445.] Growing on mud at Latchford, Oxon, July 1913.—G. C. DRUCE.

Callitriche intermedia Hoffm., var. *homoiophylla* (Gren. and Godr). Quarry pool, Kinnoul Wood, Forfar, alt. 450 feet, October 22, 1913.—R. and M. CORSTORPHINE. "Yes."—G. C. DRUCE. "I do not think the varietal name should be applied to this young sterile state of the plant."—J. GROVES.

Callitriche truncata Guss. Westerham, Kent, June 25, 1913.—C. E. SALMON. "A nice specimen, but, as usual, sterile when occurring in running water."—J. GROVES. "Probably the var. *occidentalis* R. and F."—G. C. DRUCE.

Peplis Portula L., var. *dentata* Druce, in *New Phyt.* 1911, p. 313. [Ref. No. 373.] Poaka Beck Reservoir, v.-c. 69 b, Sept. 5, 1913. Not previously recorded for N. Lancs., and interesting as being totally submerged for the greater part of the year.—W. H. PEARSALL.

Epilobium parviflorum Schreb., *forma*. Sand dunes, Blundell-sands, S. Lancs., v.-c. 59, Aug. 5, 1913. A robust plant with short fruits and a remarkably pyramidal panicle.—J. A. WHELDON. "I cannot distinguish this from type."—E. S. MARSHALL.

Epilobium hirsutum ♂ × *montanum* ♀. Artificially produced first generation hybrid. Cross made in 1911: grown at Tewkesbury, 1912-13. Interesting as a contrast to the reciprocal hybrid distributed last year. The flowers are well formed, the petals intermediate in size and shape between the parents. A certain amount of pollen is produced, but apparently no good seeds. The plant flowers early, with *E. montanum* and before *E. hirsutum*. The shape of the leaves and the pubescence differ distinctly from the reciprocal hybrid. As in other hybrids, the long runners of *E. hirsutum* are recessive. The plants are from 2-3 feet high, and bear a general resemblance in habit to *E. hirsutum*.—R. H. COMPTON.

Epilobium hirsutum L., var. *villosissimum* Koch. Grown in a Tewkesbury garden (side by side with typical *E. hirsutum*) from seed collected by Mr R. S. Adamson at Hayling Island, 1911. Simple hairs are much more abundant than in the type, especially on the upper side of the leaves and the inflorescence; glandular hairs are proportionately fewer. The lower parts of the plant and the runners show no noteworthy differences from the type.—R. H. COMPTON. "An interesting form. The species varies much in hairiness."—E. S. MARSHALL.

Epilobium tetragonum L., var. *stenophyllum* (*E. adnatum*, *forma stenophylla* Hausskn.) *Mon. Epilob.*, p. 98 (1884). These plants are obtained from seeds of a plant gathered at Hurst. (See *Fl. Berks.*, p. 230, 1897). They have proved constant in my garden. From their narrow leaves and profusely branching habit they appear variately different from type. July 1913.—G. C. DRUCE.

Epilobium roseum Schreb., f. *umbrosa* Hausskn. (fide A. Bennett). Lane side, back of Shavington Avenue, Chester, July 29, 1913.—C. WATERFALL.

Oenothera biennis L. Origin, sand dunes, Hightown, S. Lancs., v.-c. 59, Sept. 4, 1913. Cultivated for 15 years at Walton. (Vide *Lancashire Naturalist*, vol. vi., p. 205).—J. A. WHELDON. "The specimen in *Herb. Linn.* is a mere scrap, but it has small flowers like this."—E. S. MARSHALL.

Circaea lutetiana L., var. *cordifolia* Lasch. Glencar, Sligo, Aug. 20, 1913. I doubt this being a good variety, as in the locality mentioned every grade of variation between the extremes is plentiful.—W. C. BARTON. "I think correct. The description in *Linnaea* II., p. 446 (1827), says 'foliis ovatis basi cordatis.' This variety seems to be rare in Britain."—ED.

Bupleurum opacum Lange (*B. aristatum* auct. angl.) Dry limestone soil facing the sea, Daddy Hole Plain, Torquay, South Down, June 16, 1913.—C. WATERFALL.

Bupleurum tenuissimum L. Banks of Chichester Channel, Itchenor, W. Sussex, v.-c. 13, Sept. 24, 1913. Recorded from this spot as long ago as 1834.—C. E. SALMON.

Trinia glauca Reichb. ♂ and ♀. Dry gravelly ground, Berry Head, S. Devon, June 19, 1913.—C. WATERFALL.

× *Apium Moorei* Druce. [Ref. No. 8972.] (See *Report* for 1911, pp. 20, 96.) Banks of the Welland in both Lincoln and Northants, near Peakirk, Aug. 1913. Influenced by the opinion of the Rev. H. J. Riddelsdell, who, basing it upon the barrenness of the plants, upon its intermediate characters, and its always (so far as yet known) occurring with *A. nodiflorum* and *A. inundatum*, I have marked it with a cross, but it is rather suggestive than assertive. The apparent sterility may be owing to its growing in water, although *inundatum* produces good fruit, but it may be that a further study of its land form may yield additional evidence. It is an interesting addition to these counties.—G. C. DRUCE.

Ammi majus L. Seedlings, Colchester, May 1913.—G. C. BROWN.

Oenanthe silaifolia Bieb. Elstead, Surrey, June 15, 1913.—W. C. BARTON.

Oenanthe fistulosa L. Early leaves, Latchford Bog, Oxon, July 1913. G. C. DRUCE.

Oenanthe fistulosa L. [Ref. No. 8962.] Root leaves, Peakirk, Northants and Lincoln S., Aug. 1913. Probably the var. *Tabernaemontani*, but not extreme.—G. C. DRUCE.

Coriandrum sativum L. Canal bank, Ford, S. Lancs., v.-c. 59, July 15, 1913. A form with lilac-tinted flowers. Hitherto the few examples I have seen near Liverpool have had white flowers.—J. A. WHELDON. "Yes."—G. C. DRUCE.

Hedera Helix L., var. *borealis* Druce. (See *Report* for 1912, p. 162). Sligachan, Skye, December 1912. This narrow-leaved form appears to be the common one of Skye. It will be noticed that the flowers are only appearing in December. I was anxious to obtain an Orkney specimen, but Lieutenant-Colonel H. Halcro Johnston, who kindly visited Bethsdale in Hoy on Nov. 4, is afraid the plant is now extinct there. Thirty years ago he saw a clump of it on a bank at the burnside. This has now, owing to a landslide, been destroyed, nor was he able to see any in the rocky ravine.—G. C. DRUCE.

Hedera Helix L., var. *sarniensis* Druce. (See *Report* for 1912, p. 163.) These specimens, which are not very satisfactorily dried, and are only the summer foliage, are from St Martin's, Guernsey, but it appears to be the commoner form of the island, and through the kindness of Mr Attenborough I have some, although not so extreme in the flowering state, from Jersey. The Petit Bot, Guernsey, plants are an extreme form. Aug. 1, 1913.—G. C. DRUCE.

Sambucus nigra, var. *laciniata* Mill. Sible Hedingham, v.-c. 19, June 29, 1913.—G. C. BROWN. "Yes, I have seen it growing there, doubtless introduced. The authority is Linnaeus not Miller."—G. C. DRUCE.

Rubia peregrina L. Near Daddy Hole Plain, Torquay, S. Devon, July 9, 1913.—C. WATERFALL.

Galium erectum × *verum*. [Ref. No. 129.] Gravelly roadside, Stanway, N. Essex, June 6, 1913. *G. verum* was quite common, and several plants of *G. erectum* were growing within a foot of the hybrid, which could be distinguished at a glance by its sulphur-coloured flowers, and taller and more luxuriant habit than *verum*. The clump is very large and apparently long established.—G. C. BROWN. "Yes, probably this hybrid."—G. C. DRUCE.

Galium erectum × *verum*. Origin, Wood Walton, Hunts. Hort. Druce. Aug. 1913. Retaining its character in cultivation.—G. C. DRUCE.

Galium palustre L., var. *Witheringii* Sm. Ditch sides, Woodvale, S. Lancs., v.-c. 59, July 19, 1913.—W. G. TRAVIS. "Not very typical *Witheringii*, I should scarcely label it so."—G. C. DRUCE.

Galium Vaillantii DC. [Ref. No. 3912.] Frequent among the crops, especially potatoes (one or two plants occurred in a peat pit),

near Ashcott Station, N. Somerset, v.-c. 6; also in a turnip field near Shapwick Station, Sept. 25, 1913. This had previously only been found in the county, as a casual, near Bath; here it seems to be well established. Flowers small, green; fruit small, hispid-hooked, without tubercles. The habit differs considerably from that of *G. Aparine* L.; the leaves are of a brighter paler green, and it is less flaccid.—E. S. MARSHALL. "This may be the same as the Saffron Walden plant, but whether that should be called *G. Vaillantii* seems open to doubt. I have not seen De Candolle's original description or specimens, but the French floras at hand describe that plant as being not hairy above the nodes, and the fruit hairs not hooked. Mr Marshall's plant does not agree with this diagnosis."—C. E. SALMON. "Yes, the Essex plant and a new county record, I believe."—G. C. DRUCE.

Sherardia arvensis L., var. *maritima* Griseb. (*Asperula Sherardi*, var. *maritima* (Griseb.)). Arable field, Twinstead, Essex, and the common form, July 1913. This is the plant with the calyx teeth nearly or quite obsolete.—G. C. DRUCE.

Valerianella olitoria Poll., var. *lasiocarpa* Reichb. Sandscale, Dalton, v.-c. 69, Aug. 18, 1913.—D. LUMB. "May pass, but fruit is often much more hairy in this variety."—C. E. SALMON.

V. carinata Lois. Wall-top on way to Daddy Hole Plain, Torquay, S. Devon, June 16, 1913.—C. WATERFALL. "Correct."—ED.

Scabiosa Succisa L., (?) var. *hispidula*. Scrub on "clay with flints," Ditcham Park, Hants, Sept. 21, 1913.—R. S. ADAMSON. "*Succisa pratensis*, var. *hispidula* Peterm. *Fl. Lips.* 119 (1838), is described as having the leaves all quite entire. Var. *hirsuta* Reichenb., *Icon.* xii., 22, fig. 1386 (1850), has most of the stem leaves coarsely dentate. Mr Adamson's plant would appear to belong to the latter, although less markedly dentate than the plant figured."—A. J. WILMOTT.

Aster longifolius Lam. [Ref. No. 1191.] Extensively and completely naturalised near Yarnton, Oxon, Sept. 1913.—G. C. DRUCE.

Aster Linosyris Bernh. Durl Head, near Brixham, S. Devon, Aug. 1913.—C. WATERFALL.

Aster—? Clover field, Walton, S. Lancs., v.-c. 59, Aug. 1, 1913. Growing with *Rumex salicifolius* and other aliens.—J. A. WHELDON. "*Erigeron annuus* (L.) Pers."—A. THELLUNG.

Erigeron acre L., var. *serotinum* (Weihe). Sand dunes, Ainsdale, S. Lancs., v.-c. 59, June 22, 1913. I suppose under this sub-species, although the pappus is never reddish with us, but of a duller white than in *E. corymbosum* Weihe.—J. A. WHELDON.

Erigeron linifolius Willd. Tweedside, near Galashiels, Selkirk, Sept. 1913. I have found plants of these growing abundantly since 1909.—IDA M. HAYWARD.

Antennaria dioica Gaertn., var. *pedicellata* F. B. W. Arbikie Moor, Forfar, alt. 250 ft., v.-c. 90, July 13, 1913. A striking form when growing. It is confined to a patch of a few square yards. The type does not grow within many miles of the moor.—R. and M. CORSTORPHINE. "Yes, but all intermediates occur."—C. E. SALMON. "Yes, a very striking plant."—G. C. DRUCE.

Gnaphalium luteo-album L. Sandy field, Thompson, Norfolk, v.-c. 28, Aug. 30, 1913.—F. ROBINSON.

Gnaphalium uliginosum L., var. *pilulare* Wahl. [Ref. No. 366.] Castlemorton Common, Worcester, v.-c. 37, Sep. 10, 1913. Coll. R. F. TOWNDROW.—S. H. BICKHAM. "Yes, what is usually so called in England, but I see that Wahlenberg says 'foliis . . . glabratis' for his plant."—C. E. SALMON. "Yes, the achenes. have papillate hairs."—G. C. DRUCE.

Ambrosia artemisifolia L. Bingley Sewage Works ground, v.-c. 64, Aug. 21 1913. The specimens sent are lateral branches of the solitary plant found.—J. CRYER.

* *Bidens cernua* L. Greenscoe, Askam, v.-c. 69, Aug. 25, 1913.—D. LUMB.

Anthemis nobilis L. Burnham Green, Herts, Oct. 1913.—J. E. LITTLE.

Anthemis arvensis L. Cultivated ground, near Offley Grange, Hitchin, Herts, Oct. 12, 1913. In some years I have been unable to find it at all. This year I have found it in half-a-dozen localities near here, though, with two exceptions, only in small quantity.—J. E. LITTLE. "Yes."—C. E. SALMON.

Chrysanthemum segetum L., seedlings. Cultivated field, Green Road, Cumberland, May 17, 1913.—D. LUMB.

Chrysanthemum maximum DC. Watergate, near Newquay, West Cornwall, Aug. 14, and Sept. 19, 1913. These specimens are from a very extensive patch, which has completely ousted all other vegetation, and is making rapid progress. It is evidently a garden outcast.—C. C. VIGURS. "Yes."—A. THELLUNG. "Are garden outcasts worth sending for distribution?"—ED.

Matricaria inodora L., var. *maritima* (L.). Cultivated, Dalton, v.-c. 69, May 28, 1913.—D. LUMB. "If this originates from a wild situation in v.-c. 69, I think this must be var. *salina*. True *maritima* L. does not occur, I believe, in that vice-county. Mr Lumb's seedlings are most interesting."—C. E. SALMON.

Matricaria suaveolens Buch. Waste ground, Torcross, S. Devon, July 18, 1913.—C. WATERFALL.

Cotula australis Hook. f. Tweedside, near Galashiels, Selkirk, August 1913. These plants are larger this year, running more to foliage. They have been plentiful for the last four years.—IDA M. HAYWARD.

Artemisia maritima L., var. *gallica* (Willd.). Walney Island, v.-c. 69 b., Sept. 25, 1913. This variety is less common than the type in N. Lancs., and has not been previously recorded.—W. H. PEARSALL. "Yes, but according to Rouy, this plant should be called his *pseudogallica*, leaving *gallica* Willd. to designate a Mediterranean plant with elongated, oblong, sub-trigonous, 2-3-flowered heads."—C. E. SALMON.

Senecio sarracenicus L. Wilstone Reservoir, Bucks, Sept. 1913. According to the *Flora of Herts*, p. 218, the Rev. Harpur Crewe planted it at Wilstone. It now occurs in both counties.—G. C. DRUCE.

Senecio sarracenicus 'L.' Jacq. (*S. fluviatilis* Wallr.; *S. salicetorum* Godr.). [Ref. No. 3904.] Frequent by the River Alham, associated with *Aconitum*, between Milton, Clevedon, and Westcombe, v.-c. 6, N. Somerset; apparently native, Aug. 18, 1913. It is also plentiful by the River Brue, between Bruton and Alford. Ray-florets 8.—E. S. MARSHALL.

Senecio Jacobaea L., var. *discoideus* L. Sandy coast, Dog's Bay, near Roundstone, Galway W., Aug. 14, 1913.—W. C. BARTON. "Yes."—G. C. DRUCE.

Senecio sylvaticus var. *auriculatus* Meyer. Roundstone, Galway W., Aug. 14, 1913.—W. C. BARTON.

Senecio Cineraria L. Red sandstone rocks and rocky limestone ground, near Meadfoot, Torquay, July 9, 1913.—C. WATERFALL.

Senecio Cineraria × *Jacobaea*. Harbour Cliffs, and Fly Cove, Newquay, W. Cornwall, July 27 and Aug. 1, 1913. A variable plant as might be expected; the specimens from the "Harbour Cliffs" are all from one plant, and tend towards *S. Cineraria*; those from "Fly

Cove" (100 yards away) are from several plants nearer *S. Jacobaea*.—C. C. VIGURS. "Probably."—A. THELLUNG. My specimen is much nearer to *Senecio Cineraria* than to \times *Senecio albescens*.—G. C. DRUCE.

—? Climbing over shrubs above Ilsham Drive, near Torquay, S. Devon, July 11, 1913. This plant was shown me by Mr Tregale, who has known it in this place for 15 years, but has never known it flower. The leaves are bright green and rather fleshy when fresh. The base of the stem where it joins the ground is purple. The shoots were 4 or 5 feet long, with numerous offshoots from the axils of the leaves.—C. WATERFALL. "*Senecio mikanioides* Otto."—A. THELLUNG. "A South African species which I have gathered naturalised in Madeira and the Azores."—G. C. DRUCE.

Arctium vulgare Evans, var.—? Roadside, Netherton, S. Lancs., v.-c. 59, Aug 16, 1913. The heads are gathered by children, and most of the plants were mutilated before they were ripe enough to be collected. The open part of the fruiting disk measured 1—1.8 cm. in diameter.—J. A. WHELDON. "Drs L. Schinz and Thellung (*Mitt. Bot. Mus. Univ. Zurich*, Sept. 1913) reject this name and use *A. nemorosum* Lej. et Court *Mag. d' Hort.*, i. (1833), 289-290, et *Comp. Fl. Belg.*, iii, 129 (1836), since they hold (as I did in *Ann. Scot. Nat. Hist.* 1906, 222), that *Lappa vulgaris* Hill = *A. major* Bernh. = *A. Lappa* L., characterised by 'the cups round and green even at the base.' See *Hill Veg. Syst.* iv., 28. These authors identify Hill's *Lappa Arctium* as *A. tomentosum* Miller (which seems open to criticism) and *L. minor* Hill as *A. minus*."—G. C. DRUCE.

Carduus acanthoides L. Near St Neots, Hunts, Aug. 1913. There appears to be little doubt that the common Welled Thistle of England should bear the above name. *C. crispus*, or as it is better described *C. acanthoides*, var. *crispus*, has much whiter undersides to the leaves. The plants distributed are the woodland form of *acanthoides* which often gets drawn up to 6 feet high, with much of the habit of *C. palustris*. I am not certain whether it has received, or indeed deserves, a varietal name.—G. C. DRUCE.

Carduus acanthoides \times *nutans* = \times *C. Newbouldii* (H. C. Wats). [Ref. No. 9485.] Pusey, Berks, June 1913. With both parents, and a good intermediate. It is the *C. acanthoides* of Gren. and Godr., teste Syme.—G. C. DRUCE.

Cirsium arvense Scop., var. *setosum* C. A. Mey. Cloverfield, Walton, S. Lancs. (59), Aug. 5, 1913. In the same field were plants referable to var. *mite* Koch, and var. *incanum* Ledeb., and some intermediate forms. The common form of the plant was also present,

and occurred with leaves glabrous beneath, or silky-pubescent.—J. A. WHELDON. "Yes, but not an extreme form."—G. C. DRUCE. "Yes."—A. THELLUNG.

? *Cirsium lanceolatum* Scop. × *acaule* Weber. On the Undercliff, Milford-on-Sea, S. Hants, Aug. 1913. A single clump growing in connection with one of *C. acaule*, caulescent state. The contrast of the grey green foliage of the present plant with the deep green of the presumed parent was very marked. *C. acaule*, generally caulescent, occurred occasionally on the Undercliff, but was abundant on the grassy cliff tops. *C. lanceolatum* abundant on both.—J. COMBER. "Looks right."—E. S. MARSHALL. "I think only the caulescent state of *C. acaule*. It is true the achenes do not appear to be fertile, but this is often the case in otherwise normal states of *acaule*."—G. C. DRUCE. "Vix × *lanceolatum*."—A. THELLUNG.

Centaurea nigra L., var. *radiata* Koch? Waste heap, N. of Welwyn Tunnel, Herts, v.-c. 20, Oct. 6, 1913. ?Not *nigrescens* Bab. (= *decipiens* Thuill.), for the peduncles are thickened above. Pappus scales short, but present. See Pryor's *Fl. of Herts*, p. 247.—J. E. LITTLE. "*C. Jacea* L. cf. sub-spec. *jungens* Gugler, var. *fimbriatissima* Gugler."—A. THELLUNG.

Centaurea scabiosa L. (white-flowered). Greenscoe, Dalton, v.-c. 69, Aug. 26, 1913. Growing with the purple-flowered form.—D. LUMB.

Centaurea solstitialis L. In lucern, Wilbury Hill, Hitchin, Beds, v.-c. 30, Aug. 31, 1913. Two pieces of lucern sown in the autumn of 1912 from seed of "Provence lucern," supplied by T. W. O. P. Franklin of Hitchin, both produced this plant as a weed. One field at Wilbury Hill is just over the Beds. border. The other is a small patch near "The Folly," Hitchin, Herts, v.-c. 20. In the Beds field appeared also *C. Calcitrapa* (one plant only).—J. E. LITTLE.

Crepis mollis Aschers. (*C. succisaefolia* Tausch). Moist grassy banks near Garth Castle, Mid Perth, July 21, 1913.—W. A. SHOOLBRED.

Crepis virens, var. *runcinata* Bisch. Churchtown, S. Lancs., July 15, 1913.—J. A. WHELDON. "*C. capillaris*."—A. THELLUNG.

Hieracium anglicum Fr. Near Fortingal, Mid Perth, v.-c. 88, July 1913.—W. A. SHOOLBRED. "Right."—E. F. LINTON.

Hieracium submurorum Lindeb. By stream ascent to Craig Mhor, near Fortingal, Mid Perth, July 18, 1913.—W. A. SHOOLBRED. "No, *H. rivale* F. J. H. *H. submurorum* Lindeb. has much more

glandular phyllaries with few simple hairs. This specimen has much loose hair and rather few glands chiefly near the base, the floccose margins being less distinct in central than north-western Scotland. The styles appear to me to be rather, not very, livid."—E. F. LINTON.

Hieracium lasiophyllum Koch, var. *euryodon* F. J. Hanb. Fairly abundant on Cronkley Scars, Teesdale, v.-c. 65, alt. 1500 ft. Correct, though slightly different in the clothing of the involucre from other forms of the variety (teste E. F. Linton).—J. CRYER.

Hieracium pseudonosmoides Dahlst. Grassy bank of River Lyon, Fortingal, Mid Perth, July 7, 1913.—W. A. SHOOLBRED. "Rightly named, with ligules unfurled, as is so commonly the case; from a locality where it was frequent in 1891 and 1894."—E. F. LINTON.

? *Hieracium scoticum* F. J. Hanb. Bank by road-side near Halton in Litton-dale, Mid West Yorkshire, v.-c. 64, Aug. 20, 1913. Mr Linton writes:—"Not quite typical. Leaves more numerous. Peduncles hairless, shorter. Phyllaries less hairy, more glandular hairs, but after seeing the whole series of specimens gathered, Mr Linton says:—"I still think *H. scoticum*."—J. CRYER.

Hieracium—? Roadside, near Bowden, Roxburgh, alt. 560 feet, June 21, 1913. Styles bright yellow.—IDA M. HAYWARD. "*H. silvaticum* Gouan, var. *asymmetrichum* Ley, by the yellow style, or var. *tricolor* W. R. Linton, by the broader leaves, the earliest subcordate. A real distinction between these two varieties is not easy to find."—E. F. LINTON.

Hieracium silvaticum Gouan, var. *tricolor* W. R. Linton. Cliffs of the Great Scar Limestone, Arncliffe, W. Yorks., v.-c. 64. Teste E. F. Linton.—J. CRYER.

Hieracium variicolor Dahlst. [Ref. No. 833.] Rocky bank of mountain stream, Allt Odhair, near Fortingal, Mid Perth, July 18, 1913.—W. A. SHOOLBRED. "*H. petrocharis* Linton—a typical example."—E. F. LINTON.

Hieracium—? [Ref. No. 847.] Hill near Fortingal, Mid Perth, July 3, 1913.—W. A. SHOOLBRED. "*H. variicolor* Dahlst."—E. F. LINTON.

Hieracium variicolor Dahlst. [Ref. No. 821.] Shaded rocks by stream, Kiltney burn, near Fortingal, Mid Perth, July 6, 1913.—W. A. SHOOLBRED. "This is very good *H. rotundatum* Kit., as named for us by Dr C. J. Lindeberg. Rather like *H. variicolor* Dahlst. in many respects."—E. F. LINTON.

Hieracium subulatidens Dahlst. [Ref. No. 837.] By mountain stream at Odhair, Craignha, Mid Perth, July 18, 1913.—W. A. SHOOLBRED. "Looks like *H. silvaticum*, var. *symmetrichum* Ley, but there is not a good root leaf on the one specimen submitted. *H. subulatidens* has much more glandular phyllaries."—E. F. LINTON.

Hieracium crebridens Dahlst. Abundant on the banks of the Wharfe at Linton Falls, near Skipton, v.-c. 64, associated with *H. anglicum*, *H. holophyllum*, *H. britannicum*, *H. hypochaeroides*, var. *lancifolium*, &c., June 15, 1913. The Rev. E. F. Linton writes:—"This agrees with Mr Ley's plants from W. Yorks, which I have several of, pretty exactly. The clothing on glandular pedicels and phyllaries is just the same—primary heads more hairy than glandular, later heads vice versa."—J. CRYER.

Hieracium cymbifolium Purchas. Miller's Dale, Derbyshire, v.-c. 57, June 5, 1911.—J. CRYER. "Looks right."—E. F. LINTON.

Hieracium sagittatum Lindeb., var. *subhirtum* F. J. H. [Ref. No. 814.] Mountain stream north side of Meall Garth, Mid Perth, July 16, 1913.—W. A. SHOOLBRED. "Var. *subhirtum*, I believe."—E. F. LINTON.

Hieracium crebridens Dahlst. On rocks of the Great Scar Limestone, alt. 1000 ft. with *H. silvaticum*, var. *tricolor* W. R. L., Arncliffe, v.-c. 64, June 29, 1913. Rev. E. F. Linton says, "The Scotch form which is what we first took as the typical plant. I don't know that either was referred to Dahlst. The two forms differ much as *H. subulatidens* and var. *cuneifrons* in the base of the leaf. The Irish form named by Mr Elfstrand for F. J. Hanbury is like the Linton plant, and not like the Scotch."—J. CRYER.

Hieracium rubiginosum F. J. Hanb. On rocks in bed of river Wharfe, at Linton Falls, near Skipton, v.-c. 64, July 13, 1913. Named by Mr Linton.—J. CRYER.

Hieracium—? [Ref. No. 813.] By mountain stream, N. side of Meall Garth, Mid Perth, July 16, 1913.—W. A. SHOOLBRED. "With some hairs on the phyllaries and glabrous ligule tips. I think it is *H. rotundatum*."—E. F. LINTON.

Hieracium euprepes F. J. Hanb., var. *glabratum* Linton. [Ref. No. 816.] Stony bank of River Lyon, below Fortingal, Mid Perth, July 8, 1913.—W. A. SHOOLBRED. "Correct."—E. F. LINTON.

Hieracium—? [Ref. Nos. 826-827.] River Lyon, above Tronvar, July 25, 1913, and from River Lyon, Fortingal, Mid Perth, July

2, 1913. [Ref. No. 818.]—W. A. SHOOLBRED. "*Hieracium euprepes* F. J. H., var. *glabratum* Linton."—E. F. LINTON.

Hieracium euprepes F. J. Hanb., var. *glabratum* Linton. [Ref. No. 830.] Fin Glen, Glen Lyon, Mid Perth, July 25, 1913.—W. A. SHOOLBRED. "*H. euprepes*, note the broad hairy and ciliate leaves, hairy stem and peduncles as features separating this from my variety."—E. F. LINTON.

Hieracium eustales Linton. [Ref. No. 829.] Fin Glen, Glen Lyon, Mid Perth.—W. A. SHOOLBRED. "More like *H. sagittatum* Lindeb., var. *sub-hirtum* F. J. Hanbury."—E. F. LINTON.

Hieracium eustales Linton. [Ref. No. 812.] By mountain stream N. side of Meal Garth, Mid Perth, July 16, 1913.—W. A. SHOOLBRED. "Possibly, but with only one good leaf left (not one perfect root leaf), I cannot name it certainly."—E. F. LINTON.

Hieracium eustales Linton. [Ref. No. 828.] Fin Glen, Glen Lyon, Mid Perth, at 1600 to 2000 ft. alt., July 25, 1913.—W. A. SHOOLBRED. "A good deal like an off type form of *H. eustales* which I have from E. Ross, but too incomplete for naming."—E. F. LINTON.

Hieracium caesiomurorum Lindeb. [Ref. No. 825.] Shore of River Lyon, above Tronvar, Mid Perth, July 23, 1913.—W. A. SHOOLBRED. "Yes."—E. F. LINTON.

Hieracium gothicum Fr. [Ref. No. 809.] New Garth Castle, Mid Perth, July 21, 1913.—W. A. SHOOLBRED.

Hieracium prenanthoides Vill. In abundance on both banks of The Cotter, near Hawes, on the borders of v.-c. 64 and 65, Aug. 12, 1913.—J. CRYER.

Hieracium reticulatum Lindeb., *forma*. [Ref. No. 840.] Steny islet in River Lyon, Fortingal, Mid Perth, v.-c. 88, July 19, 1913.—W. A. SHOOLBRED. "Just my idea of *H. reticulatum* Lindeb."—E. F. LINTON.

Hieracium—? [Ref. No. 831.] Fin Glen, Glen Lyon, Mid Perth, July 25, 1913.—W. A. SHOOLBRED. "Specimens too poor."—E. F. LINTON.

Hieracium duriceps F. J. Hanb., var. *cravoniense* F. J. Hanb. On limestone rocks on banks of the River Wharfe, Ghaistrills, near Grassington, Mid-West Yorks, v.-c. 64, June 5, 1913. (Teste E. F. Linton).—J. CRYER.

Hieracium acroleucum Stenstr., var. *mutabile* Ley = *H. mutabile* Ley. On limestone rocks in Heseldon Glen, M.-W. Yorks., v.-c. 64, Aug. 11, 1913. New county record. Agreed to by E. F. Linton.—J. CRYER.

Hieracium scanicum Dahlst. Miller's Dale, Derbyshire, v.-c. 57, June 5, 1911.—J. CRYER.

Hieracium boreale Fr., *forma* or *var.* [Ref. No. 3876.] Plentiful on the dry banks of a pond at Gowdall, Snaith, S.-W. Yorks., v.-c. 63, Aug. 4, 1913. Styles yellow (which I had not seen before in this species); heads black, with appressed phyllaries; leaves crowded; stems short, 1½ to 2 feet high. Rev. E. F. Linton gave it no special name.—E. S. MARSHALL.

Hieracium umbellatum L., var. *linariifolium* Wallr.? Sand dunes, Formby, S. Lancs., v.-c. 59, Aug. 10, 1913.—J. A. WHELDON. "Right."—E. F. LINTON.

Hieracium umbellatum L., var. *dunale* C. A. Mey. Sand dunes, Hall Road, S. Lancs., v. c. 59, Aug. 20, 1913.—J. A. WHELDON. "Does this differ from the Formby plant, var. *linariifolium* Wallr.? The crowded leaves on the stem is an obvious feature; is this a permanent character? I do not know var. *dunale*."—E. F. LINTON.

Hieracium umbellatum L., var. *coronopifolium* Fr. Sand dunes, Hall Road, S. Lancs, v.-c. 59, Aug 20, 1913.—J. A. WHELDON. "With this leafy stem, though the teeth are not very pronounced, I agree to this as var. *coronopifolium*."—E. F. LINTON.

NOTE.—Mr Linton wishes it to be understood that he is only responsible for the naming of the one sheet seen of the *Hieracia* gatherings.—ED.

Hypochaeris maculata L., fide A. Bennett. Near Hitchin, in Beds., v.-c. 30 (a new record), June 26, 1913.—J. E. LITTLE "An interesting discovery in a new county of a disappearing plant in England."—C. E. SALMON. "My specimen has heads about half the size of the Lizard and Channel Island plants. Can it be correct?"—E. S. MARSHALL. "Yes, a most interesting new county record. The specimens resemble my Barnack (Northants) plant."—G. C. DRUCE.

Hypochaeris glabra L. (type). Margins of cultivated ground, near Potton, Beds, v.-c. 30, July 10, 1913. Very different in habit from the *H. glabra* of Tuddenham Heath, W. Suffolk, shown to me on the spot by Dr Moss, which I take to be var. *erostriis* C. and G.—J. E. LITTLE. "The typical form."—G. C. DRUCE and C. E. SALMON.

Leontodon Leysseri Beck., f. *leiolaena* Williams. Sand dunes, Birkdale, S. Lancs., v.-c. 59, Aug. 25, 1913. Sparsely scattered along the coast from Blundellsands to Southport, with the next form; and probably all the way to Blackpool, as I saw both forms at South Shore this year.—J. A. WHELDON. "Yes, but the proper name is *L. nudicaulis* Banks, of which I treat it as the type in my *List*."—G. C. DRUCE.

Leontodon Leysseri Beck., f. *lasiolaena* Williams. Sand dunes, Birkdale, S. Lancs., v.-c. 59, Aug. 25, 1913. This is much more abundant on the dunes than the f. *leiolaena*. Neither form has been recorded for S. Lancs. before.—J. A. WHELDON.

Leontodon nudicaulis Banks, var. *lasiolaena* (Bisch.). Grassy cliff tops, Milford-on-Sea, S. Hants, Aug. 1913.—J. COMBER. "Yes."—G. C. DRUCE.

Taraxacum erythrospermum Andr. Links, Monifieth, v.-c. 90, June 22, 1913.—R. and M. CORSTORPHINE. "Yes."—C. E. SALMON and E. S. MARSHALL. "Yes, the *T. laevigatum* DC. (Teste Handel-Mazzetti.)"—G. C. DRUCE.

Taraxacum spectabile Dahlst. [Ref. No. 9397.] Root from Teesdale, Durham, ex *Hort. Druce*, where it seeds well and comes true, but much increasing in size. These are seedlings from the original plant.—G. C. DRUCE. "My sheet contained leaves only. A few scapes would have been acceptable."—C. E. SALMON.

Taraxacum balticum Dahlst. See *Rep.* 1912, p. 166. Menmarsh, Oxon, May 1913. Very rare. Members must be content with a meagre supply. When out of flower it is very inconspicuous owing to its narrow sub-simple leaves, and its growing in very wet places. It was curious to see it was restricted to ground below flood level, and in some years is nearly always in or under water.—G. C. DRUCE.

Sonchus arvensis L., var. *glabrescens* G. G. and W. Cultivated fields, Walton, S. Lancs., v.-c. 59, Sept. 7, 1913. New to Lancashire. As seen growing together under the same conditions, there was a marked difference in the habit of this var. and var. *glandulosus* Coss. and Germ. The latter, which is our common form in Lancashire, is taller, of a darker green, and with smaller heads of flowers. It was quite easy to select either form before it was near enough to show the clothing of the phyllaries and pedicels. One or two examples of var. *laevipes* also occurred, these having the same habit as var. *glabrescens*, of which they are either a form or hybrid.—J. A. WHELDON. "Yes, good examples."—G. C. DRUCE. "Yes, this is var. *laevipes* G. and G. An uncommon variety in England."—C. E. SALMON.

Tragopogon minus Mill., *forma*. Selsey Hill, Stroud, Glos., July 1913.—E. ARMITAGE. Comm. S. H. BICKHAM. (See *Journ. Bot.* 1913, p. 281).

Wahlenbergia hederacea Reichb. Near Chagford, Dartmoor, S. Devon, July 16, 1913.—C. WATERFALL.

Campanula rotundifolia L., *var.* [Ref. No. 51.] Lough Gill, Co. Sligo, Aug. 17, 1913.—W. C. BARTON. "Approaching *var. scopulicola* Lamotte."—J. A. WHELDON.

Campanula rotundifolia L., *var.* Sandy coast, Dog's Bay, near Roundstone, Galway W., Aug. 14, 1913.—W. C. BARTON. "Var. *speciosa* Moore, similar to other Irish and Scottish specimens."—G. C. DRUCE. "See *Report* for 1888, p. 224, for a useful account of the varieties of *C. rotundifolia*."—ED.

Calluna vulgaris Mill., sub-*var. speciosa*. Near Wellington College, Berks. Mr R. H. Corstorphine directed my attention to *Calluna* with larger flowers than the type. I found similar plants at Sutton Park, Warwick, on the *Bot. Excursion of the British Assoc.* One has had insufficient experience to speak positively about its distinctness. The segments of the calyx and corolla are deeply cut, and are longer than the type. In both this and the type as the flower matures the lips of the calyx segments enrol so as to give, especially in the type a globular appearance to the flowers. Observations should be made on the fully expanded flower.—G. C. DRUCE.

Erica Mackayi Hook. Craigga More, Galway W., Aug. 14, 1913.—W. C. BARTON.

Kalmia glauca Ait. [Ref. No. 997.] Chobham Common, Surrey, May 18, 1913. Members can form some idea how fine a sight this plant afforded growing among the willows and birches in their young spring foliage. Though so conspicuous, I think the *Kalmia* is quite safe from all depredation, as it grows in a dangerous bog on a part of Chobham Common, remote from habitations and tracks, and is besides screened from observation by the bushes that grow with it. If introduced here, no better and more natural environment could have been chosen, one, apparently, very similar in character to that in which it grows in North America.—C. E. BRITTON.

Pyrola rotundifolia *var. maritima* (Kenyon). Sandscale, Dalton, S. Lancs., Sept. 15, 1913.—D. LUMB.

Limonium vulgare Mill., *var.* [Ref. No. 270.] Saltings by G. E. Railway, Alresford, N. Essex, v.-c. 19, Aug. 28, 1913. I cannot

match this with any of the described vars. It branches lower down the stem and has straighter, more strict branches than the ordinary form which occurs close by.—G. C. BROWN. "I think (on the strength of other examples of Mr Brown's from the same locality in *Hb. Oxford*) that these two specimens come under f. *pyramidale*, but the material is poor."—C. E. SALMON.

Limonium binervosum C. E. Salmon. Near Knott End, W. Lancs, v.-c. 60, June 1911.—W. G. TRAVIS. "Certainly."—C. E. SALMON.

Limonium binervosum C. E. Salmon. Gravelly sandy beach, Dawlish Warren, S. Devon, July 11, 1913.—C. WATERFALL. "Yes."—C. E. SALMON.

Primula scotica Hook. Shell sandy pasture near the sea, alt. 15 feet. Bay of Moelett, Papa Westray, Orkney, Sept. 9, 1913.—H. H. JOHNSTON.

Lysimachia Nummularia L. Near the South Esk between Brechin and Bridge of Dun, v.-c. 90, Aug 8, 1913. Growing far from cultivation, possibly indigenous.—R. and M. CORSTORPINE. "Only one specimen sent."—ED.

Samolus Valerandi L., seedlings. Wet sandy ground, Littlesea, Dorset, v.-c. 7, July 19, 1913.—A. B. JACKSON and C. B. GREEN.

Microcala filiformis Hoffm. and Link. Banks of Hatchet Pond, near Beaulieu, S. Hants, Aug. 1913.—J. COMBER.

Centaureum umbellatum Gilib., var. *capitatum* Koch. Grassy cliff tops, Milford-on-Sea, S. Hants, Aug. 1913.—J. COMBER. "Yes, I put Koch's plant under this species in *Ann. Scot. Nat. Hist.*, 48, 1905."—G. C. DRUCE. "*Erythraea Centaureum* var. *capitata* Koch."—J. A. WHELDON.

Erythraea littoralis Fr., var. *intermedia* Wheldon. Wet hollow in the sandhills, Hightown, S. Lancs., v.-c. 59, July 12, 1913; also same locality, Aug. 6, 1913. This tall form, with its handsome large flowers and broad leaves, and the stems frequently branched right down to the base, seems to be identical with the plant described by Mr Wheldon under the above name in *Science Gossip*, Sept. 1897.—W. G. TRAVIS. "This is *Centaureum vulgare*, var. *intermedium* (Wheldon)."—G. C. DRUCE.

Gentiana Pneumonanthe L. East Winch Common, W. Norfolk, Aug. 20, 1913. This plant was dotted over a greater part of the common. It varies very much in size, also in width of the leaves.

Specimens with more than one flower are rare. White flowered specimens were noticed amongst the others.—F. ROBINSON.

Gentiana Amarella L. Pegsdon Hills, Herts and Beds., v.-c. 20 and 30, Aug. 19, 1913. Some few plants, gathered at same time (not sent), had four-merous flowers. These I suppose can hardly be var. *præcox* Raf., as they occur amongst, and flower with, those sent.—J. E. LITTLE. "Yes, *G. Amarella*."—G. C. DRUCE.

Gentiana germanica Willd. Chalk pasture at the foot of Beacon Hill, Ellesborough, Bucks, Aug. 26, 1913.—F. L. FOORD-KELCEY. "Did not appear in 1914."—ED.

Gentiana Pamplinii Druce (*G. Amarella* × *germanica*). Growing with both parents in abundance on a chalk pasture at the foot of Beacon Hill, Ellesborough, Bucks, Aug. 26, 1913. The hybrids were very variable. Most of these specimens, Mr Druce considers, too near to *G. germanica* to be quite true *Pamplinii*.—F. L. FOORD-KELCEY.

× *Gentiana Pamplinii* Druce = *G. germanica* × *Amarella*. With both parents at Shalbourn, Wilts, Sept. 1913, coll. C. P. Hurst. It was also in great abundance at Ellesborough, Bucks, this year, when Mrs Foord-Kelcey took me to it; *G. Amarella* was then almost over flower, but *G. germanica* was in great beauty. Plenty of seed is produced, but a good percentage of it is barren.—Comm. by G. C. DRUCE.

Gentiana campestris L. Sent by Mr C. P. Hurst to ascertain whether this is to be put under the type or under *baltica*, the latter seems rather a condition than a true species. The smaller specimens (10018) are from Bedwyn Common, the larger (10019) from near Folly Farm, Great Bedwyn.—G. C. DRUCE.

Symphytum officinale L., var. *purpureum* Persoon. (*S. patens* Sibthorp). By the Land Yeo stream, near Flax Bourton, N. Somerset, June 13, 1912. The form with flowers of a deep red purple hue. "*S. officinale*, when sterile, has the segments of the calyx spreading after flowering, and it is not improbable that from this circumstance Sibthorp gave the name of *patens* to the 'red-flowered' comfrey." C. Bucknall in *Journ. Bot.* 1912, p. 333.—JAS. W. WHITE.

Symphytum lilacinum Bucknall (*S. officinale* a *ochroleucum* × β *purpureum* × *peregrinum*). See *Journ. Bot.* 1912, p. 334. By the Land Yeo at Wraxall, N. Somerset, June 1912.—J. W. WHITE.

Symphytum caeruleum Petitmengin (*S. officinale* a *ochroleucum* × *peregrinum*). See *Journ. Bot.* 1912, p. 335. Cultivated in the University Garden, Bristol, June 1913.—J. W. WHITE.

Symphytum tuberosum L. Beck Leven Point, Coniston Lake, N. Lancs., May 1913.—J. COMBER. "Yes."—C. BUCKNALL.

Symphytum tuberosum L. Banks of the Gala, near Galashiels, June 6, 1913.—IDA M. HAYWARD. "Yes."—C. BUCKNALL.

Symphytum peregrinum Ledeb. [Ref. No. 9124.] Bladon, Oxford, Aug. 1913. Latchford, Oxon, July 1913.—G. C. DRUCE. "Yes."—C. BUCKNALL.

Symphytum peregrinum Ledeb. (fide Bucknall). Near Innerleithen, Peebles, Sept. 1, 1913.—IDA M. HAYWARD.

Pulmonaria officinalis L., var. *immaculata* Opiz. Burgate Wood, E. Suffolk. v.-c. 25, Apl. 18, 1913.—W. C. EARTON.

Myosotis versicolor Sm., var. In marshy fields near Studley, Oxon. Locally abundant.—G. C. DRUCE. "*M. versicolor* Sm."—C. E. BRITTON. "A tall form of *M. hispida* Schlecht."—J. A. WHELDON. "*M. hispida* Schlecht. = *M. collina* Hoffm., according to Rouy, but this is certainly not *M. collina*."—ED.

Echium plantagineum L. In profusion on the hills between St Brelade's and Corbière, Jersey, June 10, 1913.—A. WEBSTER.

Lycium halimifolium Mill. [Ref. No. 9792.] Aldeburgh, E. Suffolk, July 1913. (Teste Dr Thellung).—G. C. DRUCE. "This is *L. vulgare* Dunel = *L. barbareum* L."—J. A. WHELDON.

Lycium—? [Ref. No. 9806.] Cassington, Oxon, Aug. 1913.—G. C. DRUCE. "From the bilabiate calyx this should also be referred to *L. vulgare* Dun., but it has broader leaves, less attenuated into the petiole. Are the attenuated leaf base and bilabiate calyx always correlated?"—J. A. WHELDON.

Hyoscyamus niger L. Broadsands, Warren, Churston, S. Devon, July 17, 1913. Burton Point, The Warral, Cheshire, Sept. 13, 1913.—C. WATERFALL.

Linaria repens Mill. On chalk, G. N. Railway yard, Hitchin, Herts, v.-c. 20, 1910-13. The station may vanish shortly with railway extension.—J. E. LITTLE.

Linaria—? Cogie Hill, near Garstang, W. Lancashire, 30 feet alt., Sept. 1913. Coll. A. BREAKELL; comm. A. WILSON. "Is not this a form of \times *L. sepium* All."—J. A. WHELDON.

Scrophularia aquatica Linn., var. *appendiculata* Mérat. Via Gellia, Matlock, Derbyshire, Aug. 5, 1913. This variety which was described by Mérat (*Fl. Par.* p. 242) is included in the type by most authors. It is distinguished by having two more or less detached lobes or leaflets at the base of the lamina. It is probably quite a frequent variety, it is at least so in the neighbourhood of Matlock.—A. H. WOLLEY-DOD. "Agrees well with the description given by Rouy in *Fl. France.*"—C. E. SALMON.

Mimulus moschatus Dougl. Marsh, Ruidh Dorch, near Spittal of Glen Shee, alt. 1300 ft., v.-c. 89, Aug. 17, 1913. Quite naturalised, growing in a marsh among rushes.—R. and M. CORSTORPHINE.

Mimulus moschatus Dougl. Well established in a dirty stream, Tronvar, Glen Lyon, Mid Perth, July 16, 1913.—W. A. SHOOLBRED.

Veronica spicata L. Near Thetford, Suffolk. As the plant is so very local, members must be content with a meagre gathering, which has been carefully made so as not to injure the living plants. I am afraid the labels are dated Sept. The specimens were gathered on August 30th, in company with Dr C. E. Moss.—G. C. DRUCE.

Veronica spicata L. Origin, Newmarket Heath, Cambridge; Hort. Reigate, July 29, 1913. It is interesting to grow this and *V. hybrida* side by side in one's garden. The latter (from St Vincent's Rocks) grows coarse and luxuriant; the former never, and is also quite unlike the foot high glabrous-leaved "*V. spicata*" of nurserymen's catalogues!—C. E. SALMON.

Veronica Anagallis L., b. *anagalliformis* (Bor.). Roadside near St Brelade's, Jersey, June 10, 1913. Only two plants seen.—A. WEBSTER. "Yes."—C. E. SALMON.

Veronica hederifolia L. Large form growing on heap of road refuse, Stanway, Essex, v.-c. 19.—G. C. BROWN.

Euphrasia nemorosa H. v. Mart. [Ref. No. 266.] Among short turf, Fordham Heath, N. Essex, v.-c. 19, Aug. 31, 1913.—G. C. BROWN. "*E. nemorosa*, I believe."—E. S. MARSHALL. "Yes."—C. BUCKNALL.

Euphrasia nemorosa H. v. Mart. Heathy ground by shore, Heshall, Cheshire, v.-c. 58, Sept. 4, 1909.—W. G. TRAVIS. "Very near it, but the leaves are somewhat hairy, so it may be *E. curta* var. *glabrescens.*"—E. S. MARSHALL. "*E. nemorosa*, I believe, modified by unfavourable conditions of growth."—C. BUCKNALL.

Euphrasia curta Wettst., var. *glabrescens* Wettst. [Ref. No. 267.] Fordham Heath, Essex N., v.-c. 19, Aug. 31, 1913. Corolla very pale lilac, streaked with dark purple, and with broader, shorter, and less deeply cut lobes than Ref. No. 266.—G. C. BROWN. "I think this must go under *E. stricta* Host. *E. curta* and its var. *glabrescens* have a different habit, with leaves of quite a different shape, &c."—C. E. SALMON. "My example is mixed with *E. nemorosa*."—J. A. WHELDON. "On this sheet there are two small specimens which may be weak *E. curta*, var. *glabrescens*, and two which are undoubtedly *E. nemorosa*. The flowers are rather large, but the plant has the spreading compound branches, the spreading leaves, and the dull colouring of that species."—C. BUCKNALL.

Euphrasia Rostkoviana Hayne. Low Gill, Hindburndale, W. Lancs., v.-c. 60, July 1913.—A. WILSON. "Yes."—E. S. MARSHALL.

Euphrasia—? Roborough Moor, Yelverton, S. Devon, June 1913. Coll. Miss COMBER.—J. COMBER. "This is Mr Davey's *E. Vigursii*."—C. E. SALMON and E. S. MARSHALL. "Very young, but apparently a dark-flowered form of *E. Rostkoviana*."—J. A. WHELDON. "An interesting dark-flowered form of *E. Vigursii* Davey."—C. BUCKNALL.

Euphrasia Kernerii Wettst. Reigate, Surrey, Aug. 30, 1913. This showy species is quite a feature of the chalk downs around Reigate. It is a variable plant—the stem may be almost simple or repeatedly branched—the flowers quite large or (in autumn) quite small. Stems, leaves, and bracts often tinged with purple.—C. E. SALMON.

Bartsia Odontites, var. Near Pegsdon, Beds., v.-c. 30, Aug. 19, 1913. I await the naming of this variety. The most characteristic specimens have widely divergent branches—J. E. LITTLE. "Is var. *serotina* (Dum.)?"—J. A. WHELDON. "*B. Odontites*."—A. THELLUNG.

Melampyrum cristatum L. Hedgerow, London Road, near Souldrop, Beds., v.-c. 30, July 6, 1913.—G. CHESTER.

Melampyrum pratense L., var. *ericetorum* Oliver? [Ref. No. 3799.] Bushy hillock, east of Garth Castle, near Fortingal, v.-c. 88, Mid Perth; locally abundant, July 6, 1913. This name was suggested at the time by Mr C. E. Salmon, and it seems to agree very fairly well with the description in the *Phytologist*, 1852, p. 678, kindly supplied by Mr Arthur Bennett. Though near var. *montanum* (Johnst.), it looked a good deal different. Plant hispid, reddish-brown, corolla-tube whitish, the limb very pale yellow, upper bracts often, but by no means always, toothed. I have not seen Irish specimens.—E. S. MARSHALL. "Var. *ericetorum* should have toothed bracts. This is,

perhaps, var. *integerrimum* Döll., given in Rouy's *Flore de France*, vol. xi., p. 125 (1909), with the characters 'bractées toutes très entières.' Var. *ericetorum* Oliver is also described as hispid, a character which does not apply to Mr Marshall's plant, which can only be described as finely pubescent. The hairs on the stem are arranged in two opposite lines on each internode, and the position of these lines of hairs alternate with those of the internodes above and below."—C. E. BRITTON.

Melampyrum pratense L., var. *ericetorum* Oliver. Grassy knoll, Inch Garth, near Keltneyburn, Mid Perth, v.-c. 88, July 6, 1913.—W. A. SHOOLBRED. "I was with Dr Shoolbred when he collected this, and I believe I suggested the name *ericetorum*. This, I think, will do very well. Whole plant hispid; flowers very pale at the base; leaves linear lanceolate; bracts either entire or toothed; plant often quite as robust as in type. Closely allied to var. *montanum*, which, indeed, may be but a slender form of it with bracts always entire." C. E. SALMON. "Probably a small form of this variety, though shading off to var. *montanum*. Var. *ericetorum* is often as large as typical *pratense*, as the describer emphasises."—A. BENNETT. "I have sent this to M. Beauverd, who is making a special study of the group. The amount of pubescence varies as much as the leaf cutting. This is a common form of the Scottish moors, but I hesitate to put it to Oliver's plant."—G. C. DRUCE.

Orobanche Ritro Gren. and Godr., var. *hypochaeroides* (G. Beck.). On *Hypochaeris radicata* in the sand hills at St Ouen's Bay, Jersey, it was only growing in one place.—A. WEBSTER. "See *Report*, 1907, 258, where I gave it varietal rank. This is from the 'locus classicus.'"—G. C. DRUCE.

Orobanche rubra Sm. Poltexo, Lizard, W. Cornwall, June 22, 1913. *Bab. Man.* Ed. ix., p. 301, says:—"sepals 1-veined, lanceolate, attenuate, exceeding the corolla-tube;" these sepals are, however, much shorter than the corolla tube. Passed by Mr A. Bennett.—C. C. VIGURS. "The older names are *O. alba* Steph. and *O. Epithymum* DC."—G. C. DRUCE.

Orobanche Hederae Duby. Near Meadfoot, Torquay, S. Devon, June 21, 1913.—C. WATERFALL.

Pinguicula lusitanica L. Lustleigh, Dartmoor, S. Devon, July 16, 1913.—C. WATERFALL.

Mentha rotundifolia Huds. Ditch-side, Rescobie, Forfar, v.-c. 90, Sept. 21, 1913.—R. and M. CORSTORPHINE. "Yes, our usual form of it, coming under a *rugosa* Wirtg. according to Rouy's arrangement

in *Fl. Fr.* A scarce species in Scotland."—C. E. SALMON. "This appears to be the var. *craspedata* Briq. judging by the very obtuse and broad crenatures of the leaves."—C. E. BRITTON.

Mentha alopecuroides Hull. Roadside near Rescobie, Forfar, v.-c. 90, Oct. 4, 1913.—R. and M. CORSTORPHINE. "Yes, this specimen favours Rev. E. F. Linton's suggestion that *M. alopecuroides* is *M. aquatica* × *rotundifolia*; the latter is sent from the same locality, and it would be interesting to know whether the other supposed parent occurs there."—E. S. MARSHALL.

Mentha longifolia × *spicata*? [Ref. No. 3906.] Brook (tributary of the River Alham), below Batcombe, v.-c. 6, N. Somerset, Aug. 18, 1913. Scent slight, agreeable. Leaves rather rugose, glabrous above, with scattered hairs on the nerves beneath. Pedicels with short, spreading hairs. Calyx-tube glabrous. Teeth linear, acute, villous. Corolla very pale lilac, rather hairy without, glabrous within. Gathered for a variety of *M. longifolia*; afterwards suspected to be *M. rotundifolia* × *spicata*. Mr Arthur Bennett considers it to be *M. longifolia* × *spicata*, nearer to *spicata*. As neither of the supposed parents was seen, it is probably an escape; one large and one small patch occurred.—E. S. MARSHALL. "Beyond the more hairy calyx this does not differ from ordinary *viridis* as far as I can see. The hairy pedicels, leaf shape and clothing and other features of *longifolia*, show no sign of being present."—C. E. SALMON. "A most interesting mint quite new to me as British."—G. C. DRUCE.

Mentha longifolia × *rotundifolia*? On island in the Gala near Galashiels, Aug. 1913. This form with long branches is to be found in several large patches by the River Gala.—IDA M. HAYWARD. "I have a specimen very like this in my herbarium on which M. Malinvaud reported as follows:—'*M. silvestris* spuria hybrid e. *rotundifolia* et *silvestris* aut *viridis*. *M. rotundifolia* var. *angustifolia* F. Sch. olim non certe *rotundifolia* legitima.'"—ED.

Mentha villosa Huds., var. *nemorosa* (Willd.) (teste Briquet). [Ref. No. 9193.] Yarnton, Oxon, Sept. 1913. M. Briquet considers, and doubtless correctly, that *M. villosa* is a hybrid of *M. rotundifolia* with *M. longifolia*. This record establishes the doubted occurrence of Willdenow's plant in Britain. The same form also occurs at Weston-on-the-Green in the same county. In my *List* I have put *villosa* under *M. longifolia*.—G. C. DRUCE.

Mentha aquatica L., var. —? "Slacks" in dunes, Freshfield, South Lancs., v.-c. 59, Aug. 1913. This plant, which is common in wet hollows in the sand dunes, is probably the variety which was met during the International Phytogeographical Excursion, and referred

to by Mr Druce in the *New Phyt.* x., Nos. 9 and 10, p. 318.—W. G. TRAVIS. "This seems the same form which M. Malinvaud calls '*M. aquatica* var. *hirsuta*, minor monocephala, forma reducta.' See *Report* 1897, p. 561."—C. E. SALMON. "Only, I believe, a depauperate state, due to situation."—E. S. MARSHALL. "I put this under var. *minor* Sole."—G. C. DRUCE.

Mentha. From a cottage garden, Prestbury, N.-E. Glos., v.-c. 33, Sept. 20 and 23, 1913.—C. BAILEY. "This has the very small corolla of \times *M. rubra*, var. *Wirtgeniana* F. Schultz = *M. verticillata* \times *viridis* Rouy. I consider this to be \times *M. cardiaca* Baker; it agrees very well with my specimens of that from Warwick, Surrey, and Bucks."—ED. " \times *gentilis* L. (*M. arvensis* \times *spicata*)."—A. THELLUNG.

Mentha rubra Sm.? Marsh at edge of reservoir, nearly dry, Barelaw, Midlothian, Aug. 26, 1913.—R. S. ADAMSON. "Certainly not *rubra*. This is a *sativa* (*aquatica* \times *arvensis*) form, and nearest, I think, to that named *paludosa* Sole."—C. E. SALMON. "I think it comes near *M. rubra*, one of the parents is doubtless the hairy form of *M. aquatica*, it is a new form to me."—G. C. DRUCE. "I should have thought much too hairy for *rubra*; much nearer *M. sativa* L. (*M. aquatica* \times *arvensis*), var. *paludosa* Sole in my opinion."—ED.

Origanum vulgare, var. *albiflorum* Lej. Craig Breidden, Montgomery, N. Wales, Aug. 1913.—J. C. MELVILL.

Origanum vulgare L., c. *albiflorum* Lej. Dunnichen Hill, Forfar, v.-c. 90, Aug. 17, 1913. This white-flowered form grows here and there on the Old Red Sandstone of Forfarshire.—R. and M. CORSTORPHINE. "Bentham in DC. *Prod.* says of *O. vulgare*:—'corolla . . . purpurascens vel rarius alba.' This Forfar plant seems, however, something more than a white-flowered state of *O. vulgare*. The bracts and calyx are of a clear green instead of purple, and the whole plant lighter in colour; it seems to be the sub-var. *pallescens* of Coss. and Germ. (*Fl. Env. Paris*, 1861), and var. *albiflorum* Schur. (*Enum. pl. Transs.* 1866)."—C. E. SALMON. "Surely not worth a varietal name."—E. S. MARSHALL. "The white-flowered plant proves constant in culture."—G. C. DRUCE.

Clinopodium vulgare L., *forma*? Chalk grassland at edge of wood, Ditcham Park, Hants, Sept. 21, 1913.—R. S. ADAMSON. "This appears to be the var. *diminutum* Eng. Simon in *Bull. Soc. Bot. Deux-Sèvres* 207, 1903. Plante réduit dans toutes les parties; verticilles pauciflores = *Satureia Clinopodium* Caruel, var. *diminuta* Rouy *Fl. Fr.* xi., 337, 1909."—G. C. DRUCE.

Lamium purpureum L., var.? Greenscoe Farm, Askham, v.-c. 69, Aug. 1913. This plant appears to be an abnormal form of *L. purpureum*, but as it came up in an onion bed it may be an alien introduced with the onion seed. There was an abundance of typical *L. purpureum* in the same bed. The odour of the plant is that of *purpureum*. The lower lip of the corolla has mostly six divisions—two lateral ones and two pairs superimposed, in place of the two ordinary subrotund terminal ones. In order to show clearly the peculiar structure of the lip, I have dried some flowers separately, having first cut off the upper lip and opened out the remainder. One seedling has appeared. This shows cotyledons considerably longer than broad. In *L. purpureum* and *L. hybridum* the seed leaves are rather broader than long.—D. LUMB. "A very interesting plant, but too young for study. Does it yield fruit? It suggests the probability of a cross between *L. purpureum* and *L. hybridum*."—J. A. WHELDON.

Lamium maculatum L., var. *laevigatum* (L.) Clova, Forfar, Coll. R. and M. CORSTORPHINE, June 1913; Comm. G. C. DRUCE. "Is *L. rubrum* Wallr."—J. A. WHELDON. "Yes, but *L. rubrum* Wallr. is only a synonym of *L. laevigatum*."—ED.

Nepeta Glechoma Benth., var. *hirsuta* Benth. in DC. *Prod.* xii., 391, 1848. Merrow Downs, Surrey, May 1913. Coll. E. ARMITAGE; Comm. S. H. BICKHAM. (See *Journ. Bot.* 1913, pp. 253, 306).

Plantago Psyllium L., var. *agrestis* (Salzm. ex Steud. ed. 2, ii., p. 347), as a species. Growing in a disused mill tank, four feet deep. A native of Spain.—IDA M. HAYWARD. "Some error or transposition of labels here. My plant is *P. major* var. *megastachya* Wallr."—J. A. WHELDON. "My specimen is *P. major* L., and Dr Thellung agrees."—G. C. DRUCE. "*P. major* var. *agrestis* Fries."—R. M. CARDEW and E. G. BAKER.

Plantago—? On pebbles by the Tweed, Selkirk, Aug. 1913. Looks like a small form of *P. agrestis*.—IDA M. HAYWARD. "A form of *P. major* closely allied to *P. nana* Tratt. *Arch. de Gen.* t. 42, (1812-18)."—R. M. CARDEW and E. G. BAKER.

P. major L., *forma*. On pebbles by the Tweed, Aug. 1913.—IDA M. HAYWARD.

Plantago Coronopus L. Golf links, Askham, v.-c. 69, Nov. 1, 1913. The diminutiveness of these plants is produced solely by their life on a regularly trodden, rolled, and cut green on the golf course. They evidently are only a small approach to the Scarth Hole plants.

I thought the comparisons were interesting, so gathered both forms.—
D. LUMB. "*P. coronopus* L., var. *pygmaea* Lange."—R. M. CARDEW
and E. G. BAKER.

P. Coronopus L., var. *pygmaea* Lange. Scarth Hole, Dalton, v.-c.
69, Aug. 26, 1913. These plants occur in such dense tufts that they
may be dug up as a sod.—D. LUMB. "Yes."—R. M. CARDEW and
E. G. BAKER.

Plantago Coronopus L., var. *pygmaea* Lange? Sandhills, High-
town, S. Lancs., v.-c. 59, Aug. 6, 1913, leg. J. A. WHELDON and
W. G. TRAVIS; Comm. W. G. TRAVIS. "Yes."—E. G. BAKER and
R. M. CARDEW.

Plantago ceratophylla Hoffg. and Lk. Shore cliffs, North of Black-
pool, W. Lancs., v.-c. 60, Aug. 23, 1913. I think this plant is
specifically distinct from *P. Coronopus*. It exhibits a considerable
range of variation in the leaves, longer or shorter, broader or narrower,
prostrate or erect, pinnatifid, bipinnatifid or dentate, but always grows
in compact, densely leafy tufts, quite unlike those of *P. Coronopus*.
The roots of all the specimens distributed have been several times
split to facilitate drying, as the clumps are too large to dry whole.—
—J. A. WHELDON. "These specimens are *P. ceratophyllon*, but we
do not consider this is more than a variety of *P. Coronopus* L. as
numerous intermediates occur."—R. M. CARDEW and E. G. BAKER.

Plantago Coronopus L., var. *Sabrinae* Cardew and Bak. fil. (see
Report 1911, p. 29) = *P. serraria* Williams. [Ref. No. 9796.]
Abundant on the eastern side of Steep Holme, where it is almost
the only form, May 23, 1913. Collected in company with Lady
Fortescue, Miss Codrington, and Mr Harford. It is certainly the
most distinct variety of *P. Coronopus* which I have yet observed, and
may, indeed, prove to be a sub-species. The firm, fleshy leaves, of a
brighter green, which are all more erect, are differentiating marks.—
G. C. DRUCE. "Correctly named."—R. M. CARDEW and E. G. BAKER.

Plantago maritima L., ? var. *latifolia* Syme. Fistral Beach,
Newquay, July 24, 1913. All these specimens are from one plant.
The leaves were broader in 1912 than in 1913. In 1912 they were
as much as one inch broad.—C. C. VIGURS. "Yes."—R. M. CARDEW,
E. G. BAKER and G. C. DRUCE.

Plantago lanceolata L., var. Sandy soil near Walton, S. Lancs,
v.-c. 59, July 8, 1913.—J. A. WHELDON. "A narrow-leaved form,
tending towards var. *graminifolia* Wahlberg."—R. M. CARDEW and
E. G. BAKER.

Chenopodium album L., sub-spec. —? Potato field, Walton, S. Lanes, Sept. 2, 1913.—J. A. WHELDON. "Is not this a small state of *C. album*, var. *viride*?"—E. S. MARSHALL.

Chenopodium album L. Trough Head, Walney Island, v.-c. 69, May 14, 1913. Probably seedlings of var. *pseudo-Borbasi* (Murr), which, through the kindness of Mr Druce, Dr Murr determined this autumn.—D. LUMB.

Atriplex patula L., forma. [Ref. No. 7978.] Lerée, Guernsey, Aug. 1913.—G. C. DRUCE. "The sheets seen are not *A. patula*, but are either *A. glabriuscula* Edmondston, or a hybrid of it with *A. hastata* v. *oppositifolia*, which its erect habit and less leafy inflorescence suggest. The fruit, however, is not sufficiently advanced to show if all will be that of *A. glabriuscula* or of the mixed type of the supposed hybrid."—A. J. WILMOTT.

Salicornia europaea L., forma *stricta* Moss. [Ref. No. 272.] Saltings partially submerged at every tide, Mersea Island, N. Essex, v.-c. 19, Sept. 25, 1913. "My material is too poor and scanty to name."—E. S. MARSHALL.

Salicornia europaea L., seedlings. Walney Island, v.-c. 69, May 22, 1913.—D. LUMB.

Salicornia. [Ref. No. 271.] On mud never submerged, edge of dyke, Langenhoe Marshes, N. Essex, v.-c. 19, Sept. 25, 1913. Plant bright green, tips of branches turning deep red, lower branches spreading flat on the ground, whole plant very bushy. Is it *S. ramosissima*?—G. C. BROWN. "*S. ramosissima* Woods, I believe."—E. S. MARSHALL.

Salicornia ramosissima Woods. Dunnerholme, Askam, v.-c. 69, Oct. 4, 1913.—D. LUMB. "Certainly not, I should say. The general appearance is that of *S. gracillima* Moss; but I cannot name these small specimens with any confidence."—E. S. MARSHALL.

Polygonum cuspidatum Sieb. and Zucc. Leaves, canal bank, Ford, July 1913; flowers from plants cultivated at Walton from plants found on waste ground there, Sept. 1913. S. Lanes, v.-c. 59. An alien of frequent occurrence near Liverpool.—J. A. WHELDON. Also from Par, Cornwall, Sept. 1911.—C. C. FIGURS. "Very common as a cultivated shrub."—ED.

Polygonum —? [Ref. No. 3918.] Abundant in a sandy wheat stubble, West Monkton, S. Somerset, v.-c. 5, Sept. 23, 1913. Prostrate, slender. This is, I suppose, a form or var. of *P. heterophyllum* Lind-

man (*P. aviculare* L., pro parte). It looks like a slender *P. agrestinum* Jord., as understood by Syme.—E. S. MARSHALL. "Under *P. heterophyllum* Lindman."—G. C. DRUCE.

Polygonum aviculare L. Prescott, S. Lancs, v.-c. 59. Leg. Rev. M. TOOLEY; Comm. W. G. TRAVIS. "This comes under *P. aequale* Lindman, I think."—ED.

Polygonum aviculare L., var. *rurivagum* (Jord.). Arable land, Malvern Wells, Worcester, Sept. 25, 1913. Coll. R. F. TOWNDROW; Comm. S. H. BICKHAM. "Under *P. heterophyllum* Lindman."—G. C. DRUCE.

Polygonum maculatum Trim. and Dyer. Goose Green, Hertford Heath, Herts, v.-c. 20, Oct. 1, 1913. Spots on stem few, faint, small. Young leaves tomentose. Styles slightly conjoined. Flowers dull pink.—J. E. LITTLE.

Polygonum maculatum Trim. and Dyer. Burnham Green, Herts, v.-c. 20, Oct. 6, 1913. The same remarks apply as to the plants from Gorse Green, Hertford, Heath. Fruit concave on both sides.—J. E. LITTLE. "I think these are *P. lapathifolium* L."—G. C. DRUCE. "I should refer both these gatherings to *P. maculatum* Trim. and Dyer (*P. nodosum*). The plants seem too small and the perianth too pink for *P. lapathifolium* L."—ED.

Polygonum minus Huds. This bright red-flowered plant is from Port Meadon, Oxon, Oct. 1913.—G. C. DRUCE. "This appears to be *P. minus*, var. *elatum* Moss, judging from specimens so named by Dr Moss in my herbarium, but the figures and specimens quoted as this in the *Cambridge British Flora* are conflicting."—ED.

Polygonum minus Huds? Goose Green, Hertford Heath, Herts, v.-c. 20, Oct. 2, 1912. Mr Druce wished for a further gathering, which I made on Oct. 1, 1913, and sent fresh to him. The stems were mostly procumbent, with slightly ascending spikes. In *lit.* (Nov. 20, 1913) he names it var. *erectum*. There were several other species growing with it.—J. E. LITTLE. "This does not agree with the description of var. *subcontiguum* forma *aquatica* Moss in the *Cambridge British Flora* ii., 122 (1914), which is there made synonymous with *P. minus* var. *erectum* Rouy *Fl. France* xii., 103, 1910, but it appears to be a form of *P. minus* Huds., or possibly a hybrid with *minus* as one of the parents."—ED.

Polygonum minus Huds. [Ref. No. 381.] On mud-covered slate at 600 ft., High Dam Tarn, N. Lancs., v.-c. 69 b., Oct. 18, 1913. A new record for this area. Occurs sparingly on the rocky shores of this

peaty upland tarn.—W. H. PEARSALL. “Rather young, but I think under *P. minus* Huds.”—ED. “Dr Moss has marked my specimen var. *elatum*.”—G. C. DRUCE.

Rumex crispus L., var.—? Clover fields, Walton, S. Lancs., July 15, 1913. Ripe fruit collected three weeks later. This has the habit and colour of var. *trigranulatus* Syme, but differs in only two sepals being tuberculate. From the type it differs in its larger perianths, causing the panicle to look thicker, its assumption of a deep purple colour very early, sometimes before the flowers are all open, and in flowering at least a fortnight earlier, the fruits being half grown when *R. crispus*, which grew with it, was only just commencing to flower.—J. A. WHELDON. “Probably *R. crispus*.”—A. THELLUNG.

R. crispus var. *trigranulatus* Syme. Shingle, Calshot Spit, S. Hants, Aug. 1913.—J. COMBER. “Yes, a common littoral plant.”—G. C. DRUCE.

Rumex nemorosus × *pulcher*. [Ref. No. 2934.] Ashton, Northants, July 1911, with both the assumed parents. Opportunity did not present itself for obtaining it later in the season.—G. C. DRUCE. “The habit and foliage look favourable; not far enough advanced to show fruit-character.”—E. S. MARSHALL. “Mr Druce’s specimens strongly suggest *R. nemorosus* as one of the parents.”—J. A. WHELDON.

Rumex obtusifolius × *sanguineus*, var. *viridis* (× *R. Duffii* Hausskn.). [Ref. No. 1061.] Littleworth Common, Surrey, July 27, 1913. With parent species at above locality. All examples distributed taken from one large plant.—C. E. BRITTON.

Rumex conglomeratus × *pulcher* (× *R. Mureti* Hausskn.). [Ref. No. 1062.] Littleworth Common, Surrey, July 27, 1913. Though *R. pulcher* is quite plentiful at this locality, I could detect only one plant that seemed to indicate a crossing with some other species. This I have named as above. The affinity with *R. pulcher* is very great, but my specimens are certainly not this species, pure and simple, and are, I believe, representative of the hybrid I name.—C. E. BRITTON. “Matches well my examples of this hybrid from Corfe and Chedzoy. Not, I think, reported before from v.-c. 17, in which county *R. pulcher* is quite a scarce plant.”—C. E. SALMON. “Why not *R. pulcher*? My example has quite the usual *pulcher* habit and well developed nuts. I fail to see any indication of hybridity.”—J. A. WHELDON.

Rumex salicifolius Weinm. Alien in clover field near Walton, S. Lancs., v.-c. 59, July 10, 1913. First seen in 1912, and then new

to Britain. Named by Dr Thellung.—J. A. WHELDON. (See *Journ. Bot.* 1913, 280). Also sent by Mr TRAVIS.

Euphorbia Esula L. Spring Hollow, near Stalybridge, S. Lancs., v.-c. 59, Aug. 1913. Leg. F. COLLIER; comm. W. G. TRAVIS.

Ulmus campestris L., var. Birch, N. Essex, v.-c. 19, flowers, May 5, 1912; leaves Aug. 28, 1913. Apparently best left as the aggregate, as twigs are slightly suberous and leaf-toothing coarse.—G. C. BROWN. "This comes under *U. glabra* Mill. (*U. nitens* Moench), I think."—ED.

Ulmus Plotii Druce. [Ref. No. 6608.] Near Sawbridgeworth, S. Essex. Fruits and young leaves, May 1912.—G. C. DRUCE.

Parietaria ramiflora Moench, var. *erecta*. [Ref. No. 9768.] Kingston Bagpuze, Berks, July 1913. This bears a superficial resemblance to the continental *P. officinalis* L. = *P. erecta* M. and K. Dr Schinz says *P. ramiflora* Moench = *judaeica* L. The varietal name is a little uncertain. It is apparently the var. *fallax* Grenier and Godron.—G. C. DRUCE.

Betula alba L. × *B. pubescens* Ehrh., var. *microphylla* E. S. Marshall. [Ref. No. 3892.] By the Allt Coire Pheiguin, West of Garth Castle, near Fortingal, Mid Perth, v.-c. 88, Sept. 2, 1913. Coll. E. S. MARSHALL and C. E. MOSS. A tree with pendulous branches, about 25 feet high. The foliage is nearer the second parent, but was very sticky beneath (a sign of *B. alba*). A second form was gathered close by, with leaves on the *alba* side, but approaching *pubescens* in habit. I take this opportunity of mentioning that the article on *Betula* in the *Cambridge British Flora* was entirely rewritten and much improved by Dr Moss, in collaboration with Mr A. G. Tansley, but they preferred that it should stand in my name only.—E. S. MARSHALL.

Salix triandra L., var. *Hoffmanniana* Sm. = var. *concolor* Koch, forma *latifolia* Andersson. [Ref. No. 229.] "The Moors," Alphamstone, N. Essex, v.-c. 19, Sept. 21, 1913. See F. B. White's *Revision of British Willows*, *Journ. Linn. Soc.*, xxvii., p. 347 (1889). The leaves on this bush are of a lighter green below, but have not the slightest trace of glaucosity. I have not seen flowers; the bush is perhaps too young.—G. C. BROWN. "This is one of the forms of *S. triandra* L., approaching sub-spec. *Hoffmanniana* very nearly, but differing from it in the leaf blades, being for the most part less ovate in outline and more frequently parallel-sided than Smith's description allows. It is, no doubt, *β. concolor*, and perhaps near Andersson's var. *latifolia*, whose var. *microphylla*, with oval leaves, seems to come nearest *S. Hoffmanniana* Sm."—E. F. LINTON.

Salix alba × *triandra* (*Salix undulata* Ehrh.) Port Meadow, Thames side, but planted, Sept. 1913.—G. C. DRUCE. "Correct."—E. F. LINTON.

Salix viminalis L. [Ref. No. 76.] Pond, Messing, v.-c. 19, Essex N. Flowers March 30. Leaves Aug. 17, 1913. A tree 20 ft., branches sub-erect, leaves dark green.—G. C. BROWN. "There is nothing abnormal in the leaves of this specimen of *S. viminalis* L., the breadth of which is liable to some variation. Some of the stigmas appear to be rather short, but they are mostly of the usual length on the more advanced catkins."—E. F. LINTON.

Salix phylicifolia L. [Ref. No. 1.] Bank of River Dochart, Killin, Perth, June 17, 1913. [Ref. No. 2.] same data. With glabrous ovaries. [Ref. No. 4.], with densely hairy ovaries. Coll. A. WILSON and J. A. WHELDON. Nos. 1 and 2 were named by the Rev. E. F. Linton.

Salix Andersoniana × *phylicifolia*. [Ref. No. 3.] Banks of the Dochart, Killin, Perth, v.-c. 88, June 17, 1913. So named by the Rev. E. F. Linton, who thinks it may, however, possibly be a form of *S. phylicifolia*.—J. A. WHELDON.

Populus canescens Sm. ♂. (?Planted.) The Grange, Stevenage, Herts, v.-c. 20, 1913. I have, as yet, only found the ♂ tree in N. Herts and E. Beds. This makes it probable that the tree is not here indigenous.—J. E. LITTLE. "Yes, very characteristic."—ED.

Populus tremula L., sucker-shoots. [Ref. No. 3802.] In a birch wood, North of Loch Tummel, Mid Perth, v.-c. 88, July 19, 1913. This is probably the type, as Dr Moss tells me that in var. *villosa* (Lange) the leaves of the sucker-shoots are decidedly cordate-based, which is not the case here; in the Highlands also, the type (*a. glabra*) seems to be by far the more common form.—E. S. MARSHALL.

Ceratophyllum submersum L., c. fr. Braunstone Pool, Leic. Discovered by the Rev. H. P. Reader. New record for v.-c. 55. Coll. W. E. MAYES, July 1913; comm. A. R. HORWOOD. "Yes, the single fruit on my specimen seems quite spineless."—C. E. SALMON. "From foliage only. I should have thought this *C. demersum* L."—E. S. MARSHALL. "From its slenderness, one would so name it, but the leaves are decidedly serrulate which *C. demersum* always is, while *C. submersum* is said to have the leaves 'not serrulate.'"—A. BENNETT.

Helleborine palustris Schk. Abundant at Sandscale, Dalton, Sept. 15, 1913.—D. LUMB.

Helleborine latifolia Druce. [Ref. No. 3921.] Limestone screes in the upper part of Cheddar Gorge, N. Somerset. v.-c. 6, Sept. 19, 1913, both in the open and among bushes. Capsules subglabrous. Two roots from this station which I grew for some time had the basal hunches of the labellum smooth; in habit they resembled Surrey specimens which were determined by Prof. Babington as the *Epipactis media* of his *Manual*.—E. S. MARSHALL.

Helleborine viridiflora Reichb. Sand dunes, Hall Road, S. Lancs., v.-c. 59, June 20 and July 14, 1913. New to Britain (*Journ. Bot.*, pp. 307, 343, 1913). See *Report*, p. 336, 1913.—W. G. TRAVIS and J. A. WHELDON.

Orchis ericetorum Linton. Heath, Lyndhurst, S. Hants, July 1913.—J. COMBER. "Yes."—E. S. MARSHALL.

Orchis maculata L., var. *præcox* Webster (*O. maculata*, sub-sp. *ericetorum* Linton). Tiptree Heath, N. Essex, v.-c. 19, June 1, 1913. Very common on Tiptree Heath, which is a piece of unclaimed heathland. A very few plants of typical *maculata* occur, with broad leaves and characteristic lips. Some forms are to be seen intermediate between type and var.—G. C. BROWN. "Dr Moss and I have already pointed out that both the Lyndhurst and Tiptree Heath plants are the type *O. maculata* of the *Species Plantarum*."—G. C. DRUCE.

Iris pseudacorus L., *vera*. [Ref. No. 9481.] New Bridge, Berks. In this plant the dark markings on the outer limbs of the perianth are lacking. It is much the scarcer form in the Midlands.—G. C. DRUCE.

Iris fetidissima L. Thickets on coast about Mudstone Sands, Brixham, S. Devon, June and July 1913.—C. WATERFALL.

Allium triquetrum L. By the roadside, Parkin's Shop, St Columb Minor, May 18, 1912; Kestle Mill, St Columb Minor, May 22, 1913; Greenwith Common, Perranarworthal, West Cornwall, May 15, 1913.—C. C. VIGURS.

Polygonatum verticillatum All. A good station for this rare plant was shown to us by Mr D. A. Haggart, within a few miles of Fortingal, Mid Perth, v.-c. 88, July 6, 1913. Associated with *Convallaria majalis* L.—E. S. MARSHALL.

Tofieldia palustris Huds. Amongst sphagnum at the foot of Cronkley Scars, Teesdale, v.-c. 65, July 6, 1913. In abundance.—J. CRYER.

Juncus maritimus Lam., var. Salt marsh, St Mary's, Isles of Scilly, Sept. and Oct. 1913. Leg. J. W. WHITE and E. A. STIDEFORD. I gathered a few specimens early in September when the rush had not reached its full development. In October a correspondent obligingly forwarded a further supply by post. But in the meantime, unfortunately, two great gales had raged at Scilly, sadly buffeting and damaging the stems; in some instances breaking off the sharp pointed bract, and thus obscuring a main feature of the variety. It will be seen that the lower bract in this plant (when uninjured) always falls short of the inflorescence, and is often not more than a sixth or a quarter its length; while in the ordinary form of the species the bract resembles a prolongation of the stem to about twice the panicle-length or even more. The Scilly plant has a weak stem, to the height of four feet or so, and a remarkably diffuse decomposed panicle. Its abundance is such that the crop was this year mown for the repair of a cottage thatch. So far as I can learn, the only varieties of *Juncus maritimus* hitherto described are *J. rigidus* Desf., a Southern plant stated to be "forte rigide," and *J. ponticus* Stev., from the Taurus. This latter, according to Aschers. and Graebn. *Syn. Mittel europ. Fl.* (kindly quoted to me by Mr C. E. Salmon), has the following characters:—"Unteres Hüllblatt den Blütenstand weit überragend. Kapsel mehr eiförmig," and so can have little in common with the plant under notice.—J. W. WHITE. "Prof. Lindman thought my specimen was rather a monstrosity than a variety."—G. C. DRUCE. "This seems scarcely a valid variety, rather a luxuriant form."—R. S. ADAMSON.

Juncus balticus Willd. Southport, Lancashire, Oct. 4, 1913. This is sent as a record. I am afraid the specimens are rather scrappy and were gathered too late in the season.—R. S. ADAMSON. "Very interesting; new to England."—G. C. DRUCE. See *Journ. Bot.*, 1913, p. 350.

Juncus subnodulosus Schrank. [Ref. No. 372.] Near coast, Roose, v.-c. 69 b., Sept. 12, 1913. These represent the normal form in N. Lancs. The fruit does not develop. Frequent in lowland marshes and always with *J. sylvaticus*. So intimately are they associated that I have frequently had to dig up whole tufts to assure myself that the species were separate. Is the plant a smirch or near its climatic and latitudinal limits here? The fact that there is only one previous record for 69 suggests that Baker's plant differed from this.—W. H. PEARSALL. "Yes, rather starved specimens."—R. S. ADAMSON. "I thought this might be a hybrid at first sight, but on my specimens (Sept. 14, 1913) I find there are fruits, though these are shorter than ordinary, and there is no doubt a greater part of the fruits are abortive. I have noted this before in other species. In looking up good fruited specimens from Carmarthen, there is no doubt

Mr Pearsall's specimens are substerile, but it evidently is a shy fruiter, and my specimens of the var. *confertus* Doell, from Jersey are also in good fruit."—A. BENNETT.

Juncus bulbosus L., var. *fluitans* (Lam.). Errisbeg, near Roundstone, Galway W., Aug. 13, 1913, alt. 600 ft.—W. C. BARTON. "*J. bulbosus* f. *uliginosus*."—R. S. ADAMSON. "No, this is the var. *uliginosus* (Fries) Druce."—G. C. DRUCE. "A viviparous state not a true variety."—E. S. MARSHALL.

Juncus bulbosus L., var. *fluitans* Lam. [Ref. No. 382.] Tarn Hows, Coniston, v.-c. 69 b., Aug. 6, 1913. This dominates the muddy margins of many mountain tarns in N. Lancs, but has not been previously recorded. It is abundant in Tarn Hows, Coniston; in Low Water (1786 ft.) on the side of Coniston Old Man; and in High Dam and Bortree Tarn (600 ft.) to the S.-W. of Lake Windermere. In many seasons it does not flower, through the water not falling sufficiently.—W. H. PEARSALL. "*J. bulbosus* f. *confervaceus* Buchenau. I consider these so-called varieties of *J. bulbosus* to be merely states due to the habitat conditions, and scarcely worthy of varietal names."—R. S. ADAMSON. "A submerged state, not a true variety."—E. S. MARSHALL. "Yes, the var. c. of my *List*, but comparative culture is needed to define the true status."—G. C. DRUCE.

Juncus tenuis Willd. On waste ground by the side of the Bridge-water Canal, Sale, near Manchester, v.-c. 58, Aug. 1913. G. A. Holt. See *Report* 1912, p. 289. A supply from a station ten miles further west on the same canal is also sent by the same collector, growing between and upon the blocks of sandstone lining the canal at Lymm, Cheshire.—C. BAILEY. "An addition to the county, I believe."—C. E. SALMON. "(1) Are typical specimens. (2) Is a peculiar form, but hardly a variety; it only differs in the crowding of the flowers. According to Rouy *Fl. Fr.* xiii., 247 (1912), both would come under var. *a. secundus* Engelm., but this is certainly not the *J. secundus* Beauv. = *J. tenuis* v. *secundus* Engelm. of Buchenau *Pflanzenr.* iv., 36, 1906, 120."—R. S. ADAMSON.

Luzula multiflora DC., var. *congesta* (Lej.). Hinderclay Wood, W. Suffolk, v.-c. 26, June 6, 1913.—W. C. BARTON. "Yes."—G. C. DRUCE.

Sparganium ramosum Huds. A deep-water form. In the Gloucester and Berkeley Canal where crossed by the branch of the Midland Railway Co., Gloucester, v.-c. 33, July 7, 1913. Collected in company with the Rev. Walter Butt. The ordinary erect form of the plant grows on the margins of the canal; but a deep-water form, wholly submersed, with branches 4 to 6 feet or more in length, grows

against the bridge pier on the quieter side of the waterway. No trace of flower or fruit was observable. The canal water at this spot is lukewarm, very similar to what occurs in the locality for *Chara Braunii* Gmel., at Reddish near Stockport.—C. BAILEY. "Very interesting. Leaves delicate and transparent like a *Potamogeton*. Was the plant flowering in the shallower part of the Canal?"—C. E. SALMON. "Yes, nice clean specimens of the forma *submersa*."—G. C. DRUCE.

Potamogeton polygonifolius Pourr., var. *pseudo-fluitans* Syme. [Ref. No. 379.] Teste A. Bennett. Higher Laith Tarn, N. Lancs, v.-c. 69 b., Sept. 12, 1913. Not previously recorded for this area.—W. H. PEARSALL.

Potamogeton alpinus Balb., forma. Ditch near the Leighton Beck, v.-c. 60, W. Lancashire, July 1913.—A. WILSON. "No, this is *P. coloratus* Hornem."—C. E. SALMON. "This is *P. coloratus* Hornem. = *P. plantagineus* Du Croz. It is recorded for Lake Lancashire (*Bot. Ex. Club Rep.* for 1890, p. 320, 1891). The Silverdale station, 'In a pit on the Cemetery road, C. Bailey'; will surely not be many miles from the present station given, as the Leighton Beck forms the boundary of the vice-county."—A. BENNETT.

× *Potamogeton lanceolatus* Sm. River Lwigy, Anglesey, July 1908.—G. C. DRUCE. "This specimen shows better than most I have seen the sound judgment of Mr Fryer with respect to this plant, as expressed in his *Potamogetons of the British Isles*, p. 63, 1913, and from *Journ. Bot.*, p. 177, 1890, p. 337, 1894. It is unfortunate that Ascherson and Graebner (*Syn. Fl. Mittel eur.*, ed. 2, p. 536-7, 1913) have exactly reversed Mr Fryer's opinion on this and the French plant, the *P. rivularis* Gillet."—A. BENNETT.

× *Potamogeton Kirkii* Syme = *P. sparganifolius* Bab. River Maam, Galway, Sept. 1906.—G. C. DRUCE. "Graebner under *P. natans* × *polygonifolius* = × *P. gessnacensis* Fischer *Mitt. Bay. Bot. Ges.* xxxvii., 172, 1905, remarks 'Huc forsan pertinet *P. Kirkii* Syme in *Eng. Bot.*, ed. 3, ix. 31, 1869.' Ascherson and Graebner in their *Syn. Fl. Mittel eur.*, do not notice the plant in their first or second editions, 1913. Supposing this, whence come the lower elongated leaves? Mr Fryer's remarks (*Pot. British Isles*, p. 17, 1898) seem to me much nearer the facts—'Mr Baagoe sent me a beautiful form collected by himself in Denmark, with the name of *P. fluitans* forma *rivularis* Lange, which seems to connect our species with *P. fluitans*. But it is always difficult, and often unsafe to judge from dried specimens, especially when not prepared in a similar manner.' Mr Baagoe's specimens, it may be noted, were most beautifully preserved, and do suggest a passage from our plant to *fluitans*. It

may be noted that Lange's original specimens of his var. *rivularis*, 1847, were named *P. sparganifolius* Laest. just as the Irish plant has been so named. In the *Exch. Club Rep.* for 1895 (1897), I remark—'I think we must, anyhow at present, use Syme's name *Kirkii*, until a careful study of the plant in situ is made.' At the same place Mr Fryer says 'It might be placed under *fluitans* as a variety, but I should prefer to name it *P. Kirkii* Syme. Possibly it may be *polygonifolius* × *natans*.' The beautiful cultivated specimens of the Hunts *fluitans* show submerged leaves very like the Irish plant, and here at present I think we must leave the Irish plant until it can be studied in situ."—A. BENNETT.

Potamogeton nitens Weber. [Ref. No. 377.] Fide A. Bennett. Low wood on River Leven, v.-c. 69 b., Aug. 16, 1913. A new record for 69. The plant has been recorded for S. Lancs, and also for Northumberland—the two nearest stations to us. Both parents occur in Lake Windermere, of which the River Leven is the outlet. Diligent search failed to discover fruit this year.—W. H. PEARSALL. "Whether produced by over-pressure (but two peduncles on the same specimen are normal), or whether a curious morphological case in point, the stipules have apparently coalesced with the peduncles, and produced a flattened peduncle, which I have not seen in the genus before. They are three-sixteenths of an inch wide, instead of the normal ones on the same plant of one-sixteenth inch wide. In specimens sent to me last July by W. Pearsall it does not occur."—A. BENNETT.

Cyperus fuscus L. Peaty valley, below Weston-in-Gordane, N. Somerset, Sept. 27, 1900.—J. W. WHITE.

Eleocharis palustris (?) var. *Watsoni*. Whatever this plant may prove to be, its vegetative period is earlier than that of typical *palustris*, among which it grows in some places on the links at Askam, v.-c. 69. It seems to grow in small tufts, and flourishes best where the soil is a sodden, putty-like mixture of sand and tidal-mud. The nut is punctate. Readily distinguished from small-growing *palustris* by the heads being out of line with the scape. This seems to result from the influence of the tightly-clasping base of the basal glume. The name was suggested by Dr F. Arnold Lees, who considers that the plant is too small, and the basal glume too darkly coloured for *uniglumis*.—D. LUMB. "For a critical plant, complete specimens are desirable. These also are too young, mine being only in the flowering stage."—G. C. DRUCE. "Labelled *E. palustris*, no doubt by a slip, as there is no var. *Watsoni* of this, but of *E. uniglumis*. The latter it certainly is, but as my examples are in flower and not fruit, the varietal characters cannot be ascertained. Apparently an addition to v.-c. 69."—C. E. SALMON. "Gathered much too early. It

looks like a small *E. uniglumis*, but whether the var. *Watsoni* (Bab.) or no can only be guessed."—E. S. MARSHALL. "Babington described *Watsoni* as a species (*Ann. Nat. Hist. Ser. 2, x., 20, 1852*, and *Manual*, ed. 4, 359, 1856), but in the ed. 6, 371, 1867, he says 'probably a form of No. 2 (i.e. *E. uniglumis*).' It was not noticed in the *Lond. Cat.* of 1856. I hardly see how Mr Lumb's specimens can be so named, as the bristles distinctly exceed the nut, and Babington says 'nut . . . exceeding the bristles'; moreover, the nuts are no more punctate-striate, and they are said to be more so in the description. I think Mr Lumb's specimens may be a var. similar to the var. *arenaria* Sonder (of *palustris*) *Fl. Hamburg.*, 22, 1851, but they are not complete specimens."—A. BENNETT.

Scirpus maritimus L., var. *monostachys* Sonder. Salt marshes near Keyhaven, S. Hants, Aug. 1913.—J. COMBER. "Yes."—G. C. DRUCE.

Scirpus americanus Pers. (*S. pungens* Vahl.). St Ouen's Pond, Jersey, 1913.—A. WEBSTER.

Scirpus pauciflorus Lightf., var. —? Freshfield, S. Lancs, v.-c. 59, July 1913. This small form, which is common in bare damp hollows in the dunes, is perhaps the var. *campester* Asch. and Graeb. —W. G. TRAVIS. "Yes, no doubt what is meant by the variety *campester* Asch. and Graeb. *Syn. Mitt. eur.* ii., 2, p. 296 (1906) = *Heleocharis pauciflora* Link, var. *minor* Sonder *Fl. Hamburg.*, 23, (1851). I have a specimen from a similar habitat at Wallasey, Cheshire, and have also seen the same dwarf plant from the same habitat in other parts of England, so it is evidently a form of damp sand hollows."—ED.

Scirpus filiformis Savi, var. *monostachys* C. and M. "Slacks" in sandhills, Freshfield, S. Lancs., v.-c. 59, Oct. 1913.—W. G. TRAVIS. "Yes."—G. C. DRUCE.

Scirpus fluitans L. From shallow peaty ponds, near Roose, N. Lancs., v.-c. 69 b., Sept. 21, 1913. Poor specimens from the only station in the area yet known to me.—W. H. PEARSALL.

Rhynchospora alba Vahl. Deer Dyke Moss, v.-c. 69 b., July 25, 1913. Frequent on peat bogs in N. Lancs., but possibly less so elsewhere.—W. H. PEARSALL.

Schoenus ferrugineus L. N.W. shore of Loch Tummel, v.-c. 88, July 19, 1913.—W. A. SHOOLBRED.

Carex acutiformis Ehrh., b. *Kochiana* (DC). River Lunan, above Auldbar, v.-c. 90, July 14, 1913.—R. and M. CORSTORPHINE. "C.

acutiformis, forma *spadicea* (Roth.) Aschers. and Graebn.—G. KÜKENTHAL.

Carex inflata Huds. (*C. rostrata* Stokes) × *vesicaria* L. [Ref. No. 3815.] With the parents in marshy ground at the head (south-west end) of Loch Tummel, v.-c. 88, Mid Perth, July 12, 1913. A good intermediate. Mr Arthur Bennett agrees.—E. S. MARSHALL. "*C. rostrata* × *vesicaria*."—G. KÜKENTHAL.

Carex hirta L., var. *hirtiformis* Pers. [Ref. No. 9418.] Border of Naseby reservoir, Northants, June 1913.—G. C. DRUCE. "Correct." G. KÜKENTHAL.

Carex hirta, var. *hirtiformis* Pers. Wet ground, Barton Common, near Milton, S. Hants, v.-c. 11, June 1913.—J. COMBER. "Yes, approaching forma *spinosa* Mort."—G. KÜKENTHAL.

Carex helodes Link. Near Lustleigh, Cleeve, Dartmoor, S. Devon, June 17, 1913.—C. WATERFALL. "Correct."—A. BENNETT.

Carex fulva Host. Kirkby Moor, Dalton, v.-c. 69, May 30, 1913.—D. LUMB. "Young and scrappy, but looks right."—E. S. MARSHALL. "*C. Hornschuchiana* Hoppe."—G. KÜKENTHAL.

Carex flava L. [Ref. No. 376.] Roudsea Wood, Haverthwaite, v.-c. 69 b., July 12, 1913. Exceptionally fine specimens.—W. H. PEARSALL. Also from D. LUMB. "Yes."—E. S. MARSHALL. "A very remarkable plant with excessively long-beaked perigynia."—G. C. DRUCE. "Correctly named. According to Prof. L. H. Bailey *Studies of Genus Carex Mem. Torrey Bot. Club*, 1889, p. 28, this is the plant of the Linnean herbarium, although Mr Pearsall's specimens slightly recede towards var. *recterostrata* Bailey."—A. BENNETT. "*C. flava* forma *umbrosa*."—G. KÜKENTHAL.

Carex flava L. With *C. Ederi*, var. *elatior*, in marsh near Bedford Purlicus, N. Northants, v.-c. 32, June 14, 1913.—G. CHESTER. "Correct."—G. KÜKENTHAL. "*C. flava* type, I believe."—E. S. MARSHALL.

Carex flava L., var. —? Rough Fen at edge of Woodwalton Fen, Hunts.—R. S. ADAMSON. "A tall form of *C. Ederi*, sub-sp. *ædocarpa* And."—E. S. MARSHALL. "I believe these come better under *Ederi*, var. *elatior* And."—G. C. DRUCE. "*C. Ederi* Retz., forma *elatior* Anderss."—G. KÜKENTHAL.

Carex Ederi Retz., var. *ædocarpa* And. Bog adjoining River Nene, between Alwinkle and Wadenhoe, Northants, June 22, 1913.

Mr Druce identified this plant two years ago. My specimens represent the typical plants of the bog. There were, however, many smaller specimens.—G. CHESTER. "I think these must go to *C. lepidocarpa* Tausch."—G. C. DRUCE. "*C. Ederi*, sub-sp. *cedocarpa* And."—E. S. MARSHALL. "*C. lepidocarpa* Tausch."—G. KÜKENTHAL.

Carex Ederi Retz., var. *elatio*r And.? Banks of a pond in Bedford Purlieus, N. Northants, v.-c. 32, June 14, 1913. Differs much from the description of the variety in Druce's *Pocket-book*. The aggregated apical spikelets, and the remote lower spikelet seem very unusual, whilst the very long leaf-like bract is not so prominent in true *Ederi*. The fruit, however, of which I made comparison of older specimens, is much the same. Curiously enough, the whole of the plants which completely surrounded a small pond, were thus characterised. Some were, indeed, much taller than these specimens whilst on a very dry footpath near by, I saw one or two plants only a few inches high. I have included specimens of true *C. flava* for comparison.—G. CHESTER. "Beak too long for that; I should refer it to sub-sp. *cedocarpa* And."—E. S. MARSHALL. "Good *elatio*r, I believe. Agrees with examples so named by Kükenthal."—C. E. SALMON. "Yes, I believe so. Prof. Lindman thought it might be *C. flava* × *Ederi*."—G. C. DRUCE. "Correct, but somewhat nearer the type form."—G. KÜKENTHAL.

Carex depauperata Curtis. Between Cheddar and Axbridge, N. Somerset, June 4, 1913.—J. W. WHITE. See *Flora of Bristol*, p. 638, 1912.

Carex tomentosa L. Origin, Fairford, Glos. Hort. Reigate, June 4, 1913.—C. E. SALMON.

Carex gracilis Curtis, var. *prolixa* (Fr.) By the Boyd Stream, between Pucklechurch and Hinton, W. Gloucester, June 12, 1913.—J. W. WHITE. "*C. gracilis* Curtis, var. *strictifolia* (Opiz) Aschers."—G. KÜKENTHAL.

Carex aquatilis Wahlenb. [Ref. No. 3809.] Locally plentiful, in marshes near the head of Loch Tummel, v.-c. 88, Mid Perth, July 12, 1913. A tall, slender form, or variety, averaging four feet in height. Unfortunately the spikelets are not sufficiently advanced to show their ultimate character.—E. S. MARSHALL. "Correct."—G. KÜKENTHAL. Also sent from the same locality by Mr W. A. Shoobred.—Ed.

Carex aquatilis Wahlenb., var. *virescens* And. [Ref. No. 3807.] Banks of the River Lyon, about six miles above Fortingal, v.-c. 88, Mid Perth, July 23, 1913. Fruit usually exceeding the short, blunt glumes. Mr Arthur Bennett thinks it correct; but some specimens are young.—

E. S. MARSHALL. "*C. aquatilis* Wahlenb., *typica*."—G. KÜKENTHAL. Also sent by Mr W. A. Shoolbred from the same locality.—ED.

Carex elata All. [Ref. No. 118.] Bog, Tiptree Heath, v.-c. 19, June 1, 1913.—G. C. BROWN. "Gathered too early. Not *C. elata*. Is young *Goodenowii*, I believe."—C. E. SALMON. "I think this is a form of *C. Goodenowii* Gay. Notice the stolon, the absence of web, and the small, slender female spikes."—G. C. DRUCE. "Material scrappy. Apparently a slender *C. Goodenowii*, perhaps under var. *juncea*."—E. S. MARSHALL. "*C. Goodenoughii*, var. *recta* Fleisch."—G. KÜKENTHAL.

Carex Goodenowii Gay, var. ? Golf links, Askam, v.-c. 69, May 30, 1913. This form grows in small tufts without creeping roots.—D. LUMB. "Rootless specimens are almost valueless, these approach the var. *chlorostachya* (Reichb.)."—G. C. DRUCE. "*C. Goodenowii*, the var. *ferre typica*."—G. KÜKENTHAL.

Carex Goodenowii Gay, var. *stenocarpa* Kük. Gleaston Beck, Urswick, v.-c. 69.—D. LUMB. "Yes, but not extreme."—G. C. DRUCE. "Correct."—G. KÜKENTHAL.

Carex Goodenowii Gay, var. *recta* (Fleisch.) A. and G. Rossie Moor, Forfar, v.-c. 90, Aug. 9, 1913.—R. and M. CORSTORPHINE. "Yes."—C. E. SALMON and G. KÜKENTHAL.

Carex—? Pool side near Zealand, W. Lancashire, alt. 120 feet, v.-c. 60, July 1913.—A. WILSON. "A variety of *C. Goodenowii*, remarkably tall and slender. I have seen nothing quite like it."—E. S. MARSHALL. "This seems intermediate between *C. Goodenowii*, var. *recta* and var. *strictiformis*."—G. C. DRUCE. "*C. Hudsonii* × *Goodenoughii*."—G. KÜKENTHAL.

Carex axillaris Good. Pond in Old Head Wood, Northants, July 12, 1913. One very large tussock. *C. remota* is very abundant, but *C. vulpina* is not represented by more than three or four plants at this pond.—G. CHESTER. "Correct."—E. S. MARSHALL and G. KÜKENTHAL.

Carex Pairaei F. Schultz. [Ref. No. 4998.] Great Brickhill, N. Bucks, June 1913.—G. C. DRUCE. "Correct."—G. KÜKENTHAL.

Carex divulsa × *vulpina*. [Ref. No. 364.] Ditch side, Bransford, Worcester, June 24, 1913. Coll. R. F. TOWNDROW. "The origin *C. divulsa* × *vulpina* is possible, and the plant might just as well be infertile *C. vulpina*, but I cannot give a definite determination without seeing the living plant."—G. KÜKENTHAL. "Probably correct. M. Brébisson (*Fl. Normandie*, ed. 4, p. 306, 1869), mentions such an hybrid as determined by M. Duval-Jouve, and found by Dr Crouzet at

Neuve-Lyre. See also *Bot. Record Club Rep.*, p. 134, 1884-6 (1887), *Watson Bot. Ex. Club Rep.*, p. 12, 1889-90, *Bot. Ex. Club Rep.*, 128, 1885-86."—A. BENNETT.

Carex paniculata L., var. *simplex* Gray. [Ref. No. 374.] Roudsea Wood, v.-c. 69 b., Aug. 2, 1913. Grows in boggy shade by the side of a peaty drain flushed by tidal water twice daily.—W. H. PEARSALL. "Gray says:—'Panicle simple, lower spikelets distant.' I do not think my example answers to this description."—C. E. SALMON. "No, the panicle is too much branched."—G. C. DRUCE. "*C. paniculata*, forma *simplex* Peterm."—G. KÜKENTHAL.

Carex paniculata L., forma *compacta*. [Ref. No. 9764.] Hornsloah, Northants, July 1913.—G. C. DRUCE.

Carex paniculata L. [Ref. No. 375.] Roudsea Wood, v.-c. 69 b., Aug. 2, 1913. In great profusion on the site of an old peaty tarn in the middle of the wood.—W. H. PEARSALL. "Yes."—C. E. SALMON.

Carex Boeninghausiana Weihe. One or two specimens are very near *C. remota* but, I think, sufficiently distinct to be included under the hybrid. A brook divides the spinney into halves. One half is quite dry—ordinary woodland—the other being moist on the bank of the brook, and very boggy elsewhere. *C. paniculata* (hundreds of immense and beautiful tussocks) occupy the bog. *C. remota* is restricted to the moist bank, and the hybrid (dozens of roots, with several distinct forms—gradations of parents) is intermediate.—G. CHESTER. "Correct."—E. S. MARSHALL. "Yes, excellent specimens of the hybrid which Mr Chester first added to the Northants flora."—G. C. DRUCE. "Correct."—G. KÜKENTHAL.

Carex. [Ref. No. 9841.] Frilford, Berks, June 1913.—G. C. DRUCE. "Looks interesting. I should like to see this with mature fruit."—C. E. SALMON. "My specimens are too young. They may be *C. diandra*."—E. S. MARSHALL. "*C. diandra* Schrank.—G. KÜKENTHAL. "*C. diandra* was first added to the Berks flora by the Rev. Lester Garland."—G. C. DRUCE.

Spartina Townsendi H. and J. Groves. Itchenor, W. Sussex, v.-c. 13, Sept. 24, 1913. This occupies an enormous acreage on Chichester Channel, from about half-tide level upwards. In drier situations on gravel it is often stunted with but few flower spikes. *S. stricta* is apparently scarce. I found one small patch near Itchenor.—J. E. LITTLE. "Correct."—E. HACKEL.

Phalaris paradoxa L. [Ref. No. 117.] Waste ground, Hythe Quarry, Colchester, N. Essex, v.-c. 19, June 2, 1913. Identified by Dr E. G. Gilbert.—G. C. BROWN. "Yes."—E. HACKEL.

Phleum pratense L., var. *majus* Sinclair. Clover field, Walton, S. Lancs (59), July 10, 1913. When extreme, a very handsome plant in tufts 4 feet high, with broad leaves and long panicles.—J. A. WHELDON. "The forma *uberior*, vigorous plants, but no distinct variety."—E. HACKEL.

Phleum pratense L., var. *nodosum* (L.) Aldeburgh, Suffolk, Aug. 1913.—G. C. DRUCE.

Phleum arenarium L. Formby, S. Lancs, v.-c. 59, May 25, 1913.—W. G. TRAVIS. "Yes."—E. HACKEL.

Agrostis verticillata Vill. Near Vale Castle, Guernsey, Aug. 14, 1912. See *Report* 1912, p. 295.—W. C. BARTON. "Yes."—E. HACKEL.

Agrostis alba L. [Ref. No. 9140.] Type. Lenslade, Bucks, July 1913. As there are so many varieties and forms of this polymorphic species, these are distributed to show what Prof. Hackel considers to be the type.—G. C. DRUCE.

Agrostis alba L., var. *condensata* Hackel. [Ref. Nos. 9802, 9806.] Marsh, Aldeburgh, Suffolk E., July 1913. These exhibit a curious hypertrophy of the glume, which when I first saw it, suggested a *Calamagrostis*. It was in considerable quantity, but persevering search resulted in detecting some plants with normal florets. Two gatherings are sent, showing that while the varietal character is constant, yet the development of the glume is evidently due to some injury which Prof. Hackel says is probably caused by a Nematod (*Tyleuchus?*) habiting the ovary and forming a zoecidium—G. C. DRUCE.

Agrostis nigra With. [Ref. No. 3819.] In grassy places by the River Lyon, Fortingal, v.-c. 88, Mid Perth, July 15, 1913. Native. Rather young, but it agrees well with Babington's description, and Mr Bennett considers it probably correct. The dark inflorescence, with erect or ascending branches, was very noticeable.—E. S. MARSHALL. "Yes."—E. HACKEL.

Polypogon littoralis Sm. [Ref. No. 114.] Waste ground, Hythe Quay, Colchester, Essex, v.-c. 19, June 16, 1913.—G. C. BROWN. "*P. crinitus* Trin., a very distinct Chilian species not at all resembling *P. littoralis*."—E. HACKEL.

Calamagrostis epigeios Roth. Sowerby Wood, Dalton, v.-c. 69, Aug. 27, 1913. Very abundant in this locality. It is fairly abundant at Sandscale on a high bank of the Duddon, and on Housethwaite Hill.—D. LUMB. "Correct."—ED. and G. C. DRUCE.

Calamagrostis epigeios Roth. Knebworth Great Wood, Herts, v.-c. 20, Sept. 3, 1911. Very scarce in the Ivel basin of N. Herts. I think this station has not hitherto been recorded. The only one mentioned in Pryor's *Flora of Herts* is at Bush Wood, Weston.—J. E. LITTLE. "Yes."—G. C. DRUCE.

Lagurus ovatus L. St Ouen's, Jersey, June 1913.—A. WEBSTER. "Originally sown there by Mr Piquet."—G. C. DRUCE.

Aira praecox L., forma *prostrata*. Grassy cliff-tops, Milford-on Sea, S. Hants, June 1913.—J. COMBER. "Yes."—E. HACKEL. "A state induced by the locality, I should say. I have seen it so on a high open heath exposed to the wind."—A. BENNETT.

Deschampsia setacea Richter. Margin of Hatchet Pond, near Beaulieu, S. Hants, Aug. 1913.—J. COMBER. "Correct."—E. HACKEL.

Avena pubescens Huds.? Roadside, Black Dog, Dalton, Lancs, v.-c. 69, July 11, 1913.—D. LUMB. "*Avena pubescens* L., var. *alpina* Gaud. (var. *glabrescens* Reichb.)."—E. HACKEL.

Phragmites vulgaris Druce, forma *nova densior* mihi. Margin of Wilstone reservoir, Bucks, in great quantity. See *Report*, p. 344. On the Hertfordshire margin the type was equally abundant. With E. D. Marquand, Sept. 1913. Prof. Hackel assents to the name.—G. C. DRUCE.

Cynosurus echinatus L. Origin, garden weed, cultivated at Dalton, July 18, 1913. The plants were extremely glaucous during the first autumn. Some of the heads are almost destitute of the characteristic bracts.—D. LUMB.

Koeleria vallesiana Asch. and Graeb. Uphill (locus classicus), Somerset. See *Report*, vol. i. 1904, 5, 37; 1905, 188.—G. C. DRUCE.

Molinia caerulea Moench, var. *arundinacea* Asch. and Graeb. [Ref. No. 10009.] Wilstone, Bucks, Sept. 1913. Not I believe recorded for Britain under the above name which is due to Prof. Hackel. It is also new as a species to N. Bucks, on the basic soil of which but few heath plants are found.—G. C. DRUCE.

Molinia caerulea, var. *major* Roth. Damp shady places by roadside, near Milton, S. Hants, Aug. 1913.—J. COMBER. "Correct."—E. HACKEL.

Desmazeria loliacea Nym. Sea wall by the Mersey, Garston, S. Lanes, v.-c. 59, July 18, 1913, W. G. TRAVIS and J. A. WHELDON. Although the situation in which we discovered this addition to the S. Lanes. Flora was artificial, we are inclined, from its distribution elsewhere in the Mersey Province, to regard it as a native plant which has simply adapted itself to altered conditions.—J. A. WHELDON. "*Catapodium loliaceum* Link."—E. HACKEL.

Desmazeria loliacea Nyman. By the roadside, Ballycastle Bay, Co. Antrim, Sept. 5, 1913.—W. G. TRAVIS. "*Catapodium loliaceum* Link."—E. HACKEL.

Briza maxima L. Apparently quite wild on waste ground not far from St Aubin's, Jersey, June 1913.—A. WEBSTER.

Briza minor L. Oat field near Cadgwith, The Lizard, Cornwall, Aug. 18, 1913.—J. W. WHITE.

Poa Chaixii Vill. Millwood, Dalton, N. Lanes, v.-c. 69, June 20, 1913. I was only able to send leaves last year, and now supplement these by flowering culms.—D. LUMB. "Yes."—G. C. DRUCE and E. HACKEL. "This species is evidently spreading, it has now been recorded from many counties."—A. BENNETT.

Poa pratensis L. [Ref. No. 7924.] Deddington Meadows, Oxon, June 1913. In the fresh state it appeared different from the type with which it grew, and at first I thought it was a cross with *trivialis*, but closer examination failed to corroborate the suggestion, and Prof. Hackel puts it under the type.—G. C. DRUCE.

Poa pratensis L., var. *subcaerulea* (Sm.). Waste sandy ground, Hightown, S. Lanes, v.-c. 59, June 30, 1913.—W. G. TRAVIS. "Yes." E. HACKEL.

Poa pratensis, var. *subcaerulea* Sm.? Sandhills, Askham, v.-c. 69, May 31, 1913. This seems to be the same grass as that sent last year in a non-flowering state.—D. LUMB. "Yes."—C. E. SALMON, G. C. DRUCE and E. HACKEL.

Poa palustris L., var. *effusa* Asch. and Graeb. Gaol fields, Walton, S. Lanes, v.-c. 59, July 1, 1913.—J. A. WHELDON. "Correct."—E. HACKEL.

Poa palustris L. = *P. fertilis* Host, *P. serotina* Ehrh. Banks of the Bridgewater Canal. usually growing on cinder rubbish. Coll. G. A. HOLT, June and July 1913, Sale near Manchester; Comm. C. BAILEY. "*P. palustris*, var. *effusa* Asch. and Graeb."—E. HACKEL.

Poa trivialis L. [Ref. No. 7918.] Woodland form. New Bridge, Berks. Prof. HACKEL puts it under the type. The plants grew three to four feet high. M. Rouy gives a var. *effusa* with very large panicles.—G. C. DRUCE.

Poa nemoralis L., var. *caesia* Gaud. ? [Ref. No. 3821.] Plentiful on cliffs above Fortingal, v.-c. 88, Mid Perth, at 1,000 to 1,200 feet, July 9, 1913; intensely glaucous. Mr Arthur Bennett writes:—"I do not know Gaudin's plant, but, judging by description, I should think your specimens must be very near it."—E. S. MARSHALL. "This seems to agree with Ascherson and Graebner's description of var. *glauca* Gaud. (= var. *caesia* Mert. and Koch) rather than var. *glaucaantha* Reichb. The latter should have, apparently, 5-6 flowered spikelets, not tinged with violet. In these examples the spikelets (violet-tinged here and there) are two, or, at most, three-flowered."—C. E. SALMON. "*P. nemoralis* var. *vulgaris* Gaud., forma *spiculis majoribus*. In the dried specimens nothing is to be seen of the 'intensely glaucous' colour. The plant sent as *P. nemoralis* f. *glaucaantha* by Mr Shoobred is the same thing."—E. HACKEL.

Poa nemoralis, var. *coarctata* Gaud. Walls, Grey Abbey, Co. Down, July 17, 1913.—C. H. WADDELL. "The inflorescence is spreading, not contracted, except in one weak specimen on my sheet. Type, I think."—E. S. MARSHALL. "*P. nemoralis* L., var. *vulgaris* Gaud."—E. HACKEL.

Poa nemoralis L., ? var. *subuniflora* Reichb. The Billings, Dalton, v.-c. 69, June 24, 1913.—D. LUMB. "This looks to me like starved type *nemoralis*. I understand var. *subuniflora* Reichb. (= *uniflora* M. and K.) should have only about six spikelets (which should be one-flowered) to the panicle. Mr Lumb's plants show neither of these features"—C. E. SALMON. "Yes, var. *subuniflora* Reichb."—G. C. DRUCE and E. HACKEL.

Poa compressa L., var. *Langeana* Koch = *P. subcompressa* Parn. Top of wall, Cambridge, July 19, 1913.—R. S. ADAMSON. "I do not know Parnell's *subcompressa*, but these specimens do not agree with Koch's description of his var. *Langeana* nor Ascherson and Graebner's view of the same. These authors indicate a much larger and coarser plant, 2 feet high, with leaves 5 mm. broad, spikelets 8-11 flowered, &c"—C. E. SALMON. "*Poa compressa* L., var. *typica* Aschers. and Graeb."—E. HACKEL.

Glyceria—? [Ref. No. 55.] Sandy coast, Dog's Bay, Galway W., Aug. 13, 1913.—W. C. BARTON. "*Poa pratensis* L., var. *subcoerulea* (Sm.), I believe. A frequent plant of sandy shores."—C. E. SALMON. "Is not this a small *P. pratensis* var. *subcoerulea* Sm., forma

brevior?—E. S. MARSHALL. "*Poa irrigata* Lindm. in *Botan. Notis.*, 1905, p. 89. I am not yet sure of the specific rank of this plant which comes very near *P. pratensis*, var. *subcoerulea* Sm., but it is no doubt distinct."—E. HACKEL.

Glyceria fluitans, var. *triticea* Fr. Hatchet pond, near Beaulieu, S. Hants, Aug. 1913.—J. COMBER. "Correct."—E. HACKEL.

Glyceria distans Wahl., (*Sclerochloa distans* Bab. = *Atropis distans* Rupr.). Growing in hard ground, consolidated with brick rubble, Bollington, Cheshire. Collected, G. A. Holt, June 1913. Sent to record an unusual station for this species.—C. BAILEY. "*Atropis distans*."—E. HACKEL.

Glyceria festucaeformis Heyn. Pig Island, Strangford Lough, Co. Down, July 1913.—C. H. WADDELL. "*Atropis maritima* Griseb. = *Glyceria maritima* Wahl."—E. HACKEL.

Festuca rubra L., var. Hunstanton, July 17, 1913. Forming small embryo dunes between the *Agropyron junceum* and the *Ammophila* dunes.—R. S. ADAMSON. "*Festuca rubra*, var. *arenaria*."—E. HACKEL.

Festuca ovina L., var. *paludosa* Gaud. On wind swept moor, nursed by stunted whin and ling, June 26, 1913. I originally separated this set into specimens with and without awns, but eventually decided to keep them together.—D. LUMB. "Comes under the var. *paludosa*, but a few of the glumes have awns."—G. C. DRUCE. "*Festuca ovina* var. *capillata* Hack."—E. HACKEL.

Festuca rubra L. Rockery, Dalton, June 27, 1913; also from Millwood, Dalton, June 7, 1913.—D. LUMB. "Yes."—G. C. DRUCE. "*Festuca rubra*, var. *vulgaris* Gaud."—E. HACKEL.

Festuca rubra, var. *barbata* Hackel. Sandy shore, St Osyth, N. Essex, v.-c. 19, June 13, 1912.—G. C. BROWN. "*F. rubra*, var. *arenaria* Fr."—E. HACKEL.

Festuca ovina L., var. —? Near Coniston, N. Lancs, v.-c. 69, June 1913.—W. G. TRAVIS. "*F. ovina* L., var. *capillata*, sub-var. (nov.) *hirtula* Hack. Differt a var. *capillata* typica glumis omnibus appresse hirtulis, spiculis paullo majoribus (6-7 mm. longis). Folia inferiora patenti-hirtula, superiora glabra."—E. HACKEL.

Festuca ambigua Le Gall? [Ref. No. 113.] Waste ground, Hythe Quay, Colchester, v.-c. 19, May 27, 1913.—G. C. BROWN. "No, this is *F. Myuros* L."—C. E. SALMON. "Prof. Hackel refers this grass to *Festuca Broteri* Nym. = *Vulpia Broteri* Boiss. and Reut."—ED.

Festuca Myuros L. Wall top in lane near the County Asylum farm, Chester, April 26, 1913. Coll. THOS. E. MILN; comm. C. WATERFALL. "*F. bromoides* L. (*F. sciuroides* Roth.)."—E. S. MARSHALL. "*F. dertonensis* Aschers. and Graeb. resembling *F. Myuros* L. in habit."—E. HACKEL. "*F. dertonensis* Aschers. and Graeb. = *F. bromoides* L."—ED.

Bromus rigidus Bab. JANVIN'S Tomb, Portelet Bay, Jersey, June 9, 1913.—A. WEBSTER. "Yes, *B. madritensis* L., var. *rigidus* Bab., I believe."—C. E. SALMON. "*B. villosus* Forsk., var. *rigidus* Aschers. and Graebn."—E. HACKEL.

Bromus rigidus Roth. Waste ground, Yiewsley, Middlesex, June 2, 1911.—J. E. COOPER. "*B. villosus* Forsk."—E. HACKEL.

Bromus racemosus L. [Ref. No. 4761.] Deddington, Oxon, June 1913.—G. C. DRUCE.

Bromus arvensis L. In abundance on waste ground, Bradford, July 29, 1913.—J. CRYER. "Yes."—G. C. DRUCE and E. HACKEL.

Bromus hordeaceus L., forma. Sand dunes, Formby, S. Lancs, v.-c. 59, May 10, 1913. Leg. W. G. TRAVIS and J. A. WHELDON. A small, early-flowering form, with very hairy sheaths, but spikelets less hairy and more compact than in the type.—J. A. WHELDON. "*B. hordeaceus* L., specimen *macrum*."—E. HACKEL.

B. hordeaceus L., var. Sandy shore, Mersea Island, N. Essex, May 30, 1912.—G. C. BROWN. "*B. hordeaceus* L., var. *Thomini* Aschers. and Graebn."—E. HACKEL.

Bromus hordeaceus L., var. *leptostachys* Pers.? Netherton, S. Lancs, v.-c. 59, July 15, 1913.—J. A. WHELDON and W. G. TRAVIS; comm. W. G. TRAVIS. "Yes, the authority is Beck. *Fl. Nied.-Oester.*, 109 (1890)."—G. C. DRUCE and E. HACKEL.

Bromus hordeaceus L., var. *leptostachys* Pers. [Ref. No. 9042.] Teste Hackel. A robust form from Linslade, Bucks, July 1913.—G. C. DRUCE.

Bromus interruptus Druce. Field of sown fodder at Failand, N. Somerset, June 1913.—J. W. WHITE. "Correct."—E. HACKEL.

Brachypodium pinnatum Beauvois, var. *corniculatum* (Lam.). Baroden Heath, Rutland, Aug. 1913. A common form there.—G. C. DRUCE. "Yes, forma *corniculata*."—E. HACKEL. "Mr C. B. Green and I gathered a similar form near Corfe Castle in July 1913."—ED.

Lolium perenne L., var. *cristatum* Doell. [Ref. No. 54.] Hinderclay, W. Suffolk, v.-c. 26, June 6, 1913.—W. C. BARTON. "Yes."—E. HACKEL.

Lolium perenne, var. *aristatum* Schum. Waste ground, Milford-on-Sea, S. Hants, Aug. 1913.—J. COMBER. "*L. multiflorum*, var. *perennans* Asch. and Graeb. (= *L. italicum* A. Br.)."—E. HACKEL.

Agropyron junceum Beauv. × *A. repens* Beauv. Sand dunes, Hunstanton, July 17, 1913. A form nearer *A. junceum*.—R. S. ADAMSON. "Yes, but *super-junceum*."—G. C. DRUCE. "*A. junceum* Beauv., no trace of hybridity with *A. repens*."—E. HACKEL.

Agropyron pungens R. and S. [Ref. No. 9793.] Aldeburgh, Suffolk E., July 1913.—G. C. DRUCE.

Agropyron pungens R. and S. × *A. repens* Beauv. Edge of salt marsh, Braydon Water, Great Yarmouth, Aug. 4, 1913. This plant formed a distinct zone between the two parents.—R. S. ADAMSON. "Yes, under my × *A. Oliveri*, but *super-pungens*."—G. C. DRUCE. "*A. repens* Beauv. I doubt whether there is any hybrid influence of *A. pungens*, but I cannot fully exclude it."—E. HACKEL.

Agropyron pungens, var. *campestre* Gr. and Godr. Dryish rising ground between the sluices and Salt Marsh, Keyhaven, S. Hants, July 1913.—J. C. MELVILL. "*Agropyron pungens* R. and Sch., not *A. campestre* Gr. and Godr., which is a variety of *A. intermedium* Beauv., not of *A. pungens*."—E. HACKEL.

Agropyron pungens R. and S. [Ref. No. 9793.] Aldeburgh, Suffolk E., July 1913.—G. C. DRUCE.

Agropyron repens Beauv., var. *arvense* Schrank. ? Fields, Walton, S. Lincs, v.-c. 59, July 6, 1913. Grows in subcaespitose tufts, owing to the very shortly—hardly at all—creeping roots.—J. A. WHELDON. "Yes."—E. HACKEL.

Agropyron repens, var. *lasiorachis* Hackel. Fistral Beach, Newquay, W. Cornwall, June 29, 1913. A very good variety I think. Type and variety were growing close together, but in quite separate patches, and the variety kept quite distinct from the type. In 1912 the leaves were very broad. Named by Mr Druce.—C. C. VIGURS. "Yes, the forma *trichorachis* Rohlend."—G. C. DRUCE. "*Agropyrum repens*, forma *trichorachis*."—E. HACKEL.

Equisetum arvense L., var. *alpestre* Wahl. In wet ground below springs, on the Glen Lyon side of Beinn Ghlas, at 2950 feet, Mid Perth, v.-c. 88, June 16, 1913. A. WILSON and J. A. WHELDON.

The filiform barren stems with some of the examples were produced from roots grown on at Walton.—J. A. WHELDON.

Equisetum arvense L., var. *erectum* Mey, f. *ramosum* Rupr. Walton, S. Lancs, v.-c. 59, July 6, 1913.—J. A. WHELDON.

Equisetum arvense × *limosum* (*E. litorale* Kühlewein). [Ref. No. 3825.] South shore of Loch Tummel, v.-c. 88, Mid Perth; very local. The plants grew close to one another. Tube of stems intermediate in diameter. Cones rarely produced; small, abortive. Apparently new for Scotland. It was seen, a week later, at the north-west end of the loch, associated with the two species, in a somewhat stronger form.—E. S. MARSHALL. "Although much less branched, and with shorter branches than any of my examples from the Bisley locality, it agrees well with them in all other respects."—J. A. WHELDON.

Gymnogramme leptophylla Desv. Devil's Hole, Plemont, Jersey, June 10, 1913. This beautiful little fern was only to be found in a very young state, growing in a cave.—A. WEBSTER. "A very interesting contribution. I am pleased to say that only a few specimens were sent in."—ED.

Azolla filiculoides Lam. Near Pangbourne, Berks, Sept. 1913. Sent in order to correct the error in last *Report*, p. 220, where the Berkshire plant was named *A. caroliniana*. This year, fruiting specimens enable Mr N. E. Brown to name it as above. It is also now abundant in the ornamental water at Nuneham Park, Oxon, and in the Thames near Sonning. For the distinguishing features see *Report*, p. 186, 1912.—G. C. DRUCE. See also Mr Marsh's paper on *Azolla in Britain and Europe, Journ. Bot.*, 1914, p. 209.

Nitella opaca Agardh, fide Groves. Mud at bottom of water in a shallow pool, 80 feet above sea level, Garth Head, S. Waas, Hoy, Orkney, July 23, 1913. Plant slightly fœtid.—H. H. JOHNSTON.

Nitella mucronata Miguel. Godstow, Oxon, Aug. 1892. In abundance that year, but has never since appeared. See *Report*, vol. i., 395, 1892.—G. C. DRUCE.

Chara (Tolypella) glomerata Chevall. Pools on the sand dunes, Ainsdale, S. Lancs, v.-c. 59, June 22, 1913. More robust than is usual with our sand dune plant, but I suppose only *C. glomerata*.—J. A. WHELDON. "Yes, but the authority for the species when included under *Chara* is Desvaux, not Chevallier who placed it under *Nitella*. Surely no one to-day can seriously contend that *Tolypella* should be regarded as a sub-genus of *Chara*! The *Chareæ* and *Nitelleæ* must be kept distinct, whatever one does with the smaller genera. To my thinking *Tolypella* constitutes a well-marked genus.

Mr Wheldon's specimens have ripe fruit, but are collected too late to make good herbarium sheets."—J. GROVES.

Chara vulgaris L. Lizard, W. Cornwall, v.-c. 1, June 1913. I send these at the suggestion of Mr Jas. Groves, who remarks that they are beautiful specimens, being free from the usual incrustation.—C. C. VIGURS. "Yes, forma *papillata microptila et brachytelea*. It is a pleasure to examine specimens of *C. vulgaris* like these without the lime incrustation by which it is almost always disfigured."—J. GROVES.

C. aspera Willd. Common on mud at bottom of water in Loch of Swartmill, Westray, Orkney, Sept. 6, 1913. Plant fetid.—H. H. JOHNSTON. "Type, a beautiful slender form."—J. GROVES.

CORRECTIONS IN DISTRIBUTOR'S REPORT FOR 1912.

Page 262. *Hieracium iricum* Fries. In fifth line, for "formation" read "formalin."

Page 272. *Euphrasia curta* Wettst., var. b. *glabrescens* Wettst. Add the following note:—"As some doubt existed as to the correct identification of the specimens of '*Euphrasia curta* Wettst., var. *glabrescens* Wettst.,' collected by me at The Bout, Veness, Orphir, Mainland, Orkney, on July 19 1912 (see p. 272), and '*Euphrasia curta* Wettst.,' at the Black Crag, Stromness, Mainland, Orkney, on August 19, 1912 (see p. 273), I recently submitted all my specimens from these two stations to the Rev. E. S. Marshall, who, after careful examination, is now of opinion that they all come under *Euphrasia borealis* Townsend, some of the specimens from each station belonging to the type of the species, while the remainder appear to be the var. *pubescens* Townsend, in sched. (Wettstein *Monograph*, p. 109). With reference to the var. *pubescens* Townsend, the Rev. E. S. Marshall remarks that he has not seen specimens of this variety, which the late Mr Townsend did not mention in his *Monograph of the British Species of Euphrasia* (*Journ. Bot.*, 1897), Townsend's own description of his species *E. borealis*, apparently covering his var. *pubescens*, in sched. (Wettstein *Monograph* p. 109).—H. H. JOHNSTON.

Page 272. *E. gracilis* Fr., line 5 from bottom, for "Pegap" read "Pegal."

Page 294. *Phalaris minor* Retz. [Ref. Nos. 30 and 30 (a).] To clear up any possible confusion in the naming of these forms, specimens were again submitted to Prof. Hackel, who replied—"Phalaris minor Retz., in different states of nutrition: (1) type; (2) a starved state, no variety; (3) an intermediate state." Accordingly, all labelled Ref. Nos. 30 or 30 (a) will go under type, and the starved state is presumably forma *gracilis* Parl. *Fl. Ital.* i., 70 (1848).—W. C. BARTON.

